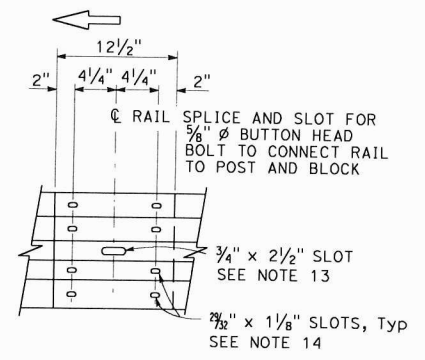
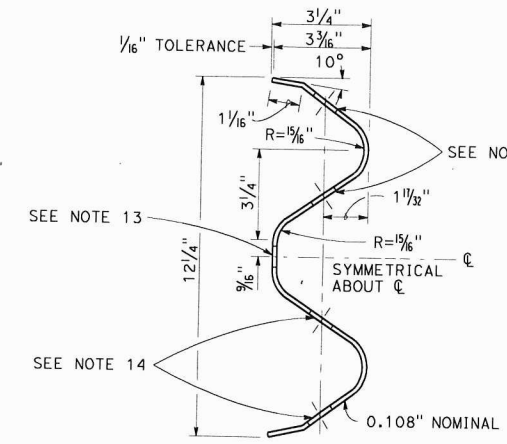


MIDWEST GUARDRAIL SYSTEM WITH WOOD POST AND BLOCKS

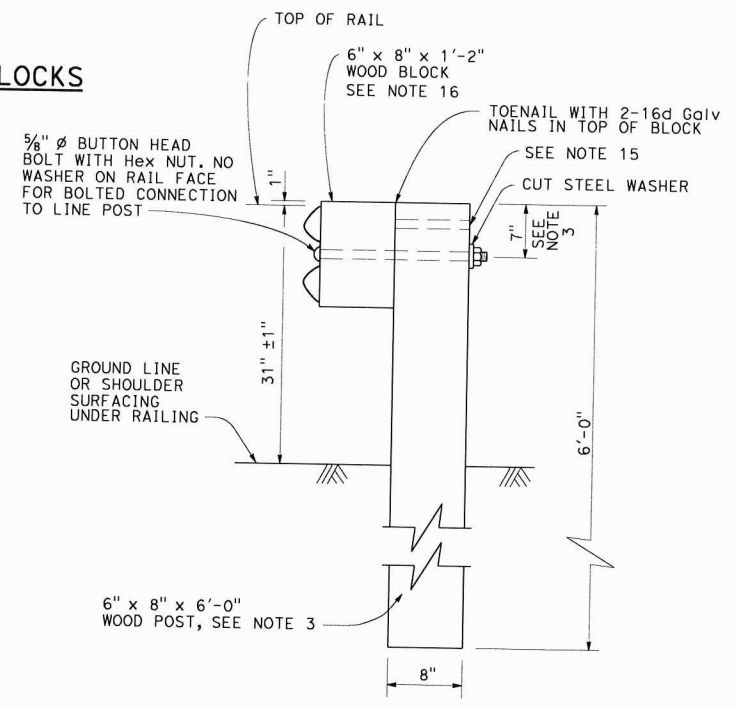


RAIL ELEMENT SPLICE DETAIL

- a) Connect the overlapped end of the rail elements with 5/8" ϕ x 1 3/8" button head oval shoulder splice bolts inserted into the 3/4" x 2 1/2" slots and bolted together with 5/8" ϕ recessed hex nuts. Recess of hex nut points toward rail element. A total of 8 bolts and nuts are to be used at each rail splice connection.
- b) The ends of the rail elements are to be overlapped in the direction of traffic (see details).
- c) Where end cap is to be attached to the end of a rail element, a total of 4 of the above described splice bolts and nuts are to be used.



SECTION THRU RAIL ELEMENT



SECTION A-A TYPICAL WOOD LINE POST INSTALLATION

See Note 4

DIST.	COUNTY	ROUTE	POST MILES TOTAL PROJECT	SHEET NO.	TOTAL SHEETS

Randell D. Hiatt
REGISTERED CIVIL ENGINEER

May 31, 2018
PLANS APPROVAL DATE

THE STATE OF CALIFORNIA OR ITS OFFICERS OR AGENTS SHALL NOT BE RESPONSIBLE FOR THE ACCURACY OR COMPLETENESS OF SCANNED COPIES OF THIS PLAN SHEET.

REGISTERED PROFESSIONAL ENGINEER
No. C50200
Exp. 6-30-19
CIVIL
STATE OF CALIFORNIA

NOTES:

1. For details of steel post installations, see Standard Plan A77L2.
2. For details of standard hardware used to construct MGS, see Standard Plan A77M1.
3. For details of wood posts and wood blocks used to construct MGS, see Standard Plan A77N1.
4. For additional installation details, see Standard Plan A77N3.
5. MGS post spacing to be 6'-3" center to center, except as otherwise noted.
6. For MGS typical layouts, see the A77P, A77Q and A77R Series of Standard Plans.
7. If railing is connected to terminal system end treatment, use 31" height terminal system end treatment.
8. For MGS end anchor details, see Standard Plans A77S1 and A77T2.
9. For details of MGS transition to bridge railing, see Standard Plan A77U4.
10. For additional details of MSG connection to bridge railing, see Standard Plans A77U1, A77U2 and A77V1.
11. For MGS connection details to abutments and walls, see Standard Plan A77U3.
12. For typical MGS delineation and dike positioning details, see Standard Plan A77N4.
13. Slotted hole for bolted connection of rail element to block and post.
14. Slotted holes for splice bolts to overlap ends of rail element.
15. Additional hole in uppermost portion of line post is for potential future adjustments of railing height. See Standard Plan A77N1.
16. 6" x 12" x 1'-2" block must be used with 6" dike.

STATE OF CALIFORNIA
DEPARTMENT OF TRANSPORTATION
**MIDWEST GUARDRAIL SYSTEM
STANDARD RAILING SECTION
(WOOD POST WITH
WOOD BLOCK)**

NO SCALE

A77L1

2018 STANDARD PLAN A77L1