

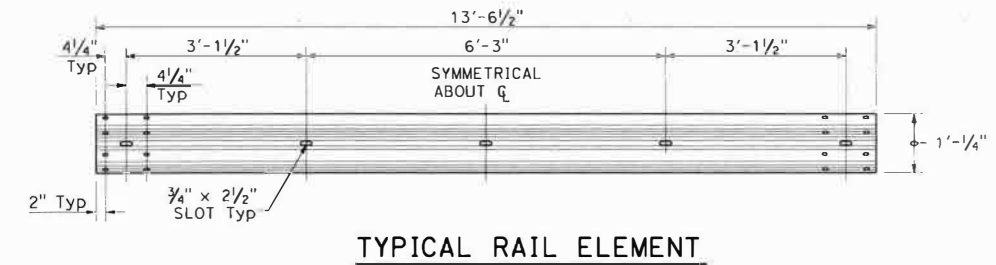
Dist.	COUNTY	ROUTE	POST MILES TOTAL PROJECT	SHEET No.	TOTAL SHEETS

**Randell D. Hiatt**  
REGISTERED CIVIL ENGINEER

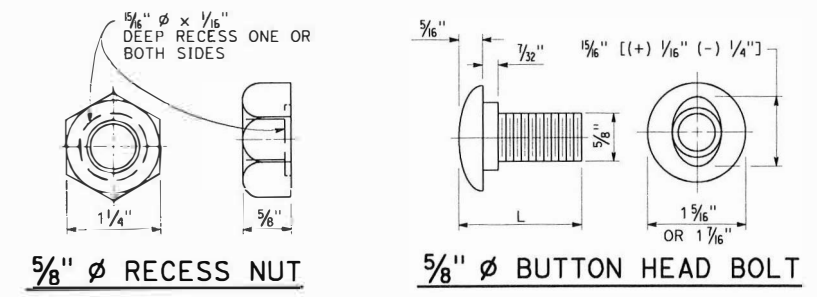
May 31, 2018  
PLANS APPROVAL DATE

**Randell D. Hiatt**  
REGISTERED PROFESSIONAL ENGINEER  
No. C50200  
Exp. 6-30-19  
CIVIL  
STATE OF CALIFORNIA

THE STATE OF CALIFORNIA OR ITS OFFICERS OR AGENTS SHALL NOT BE RESPONSIBLE FOR THE ACCURACY OR COMPLETENESS OF SCANNED COPIES OF THIS PLAN SHEET.



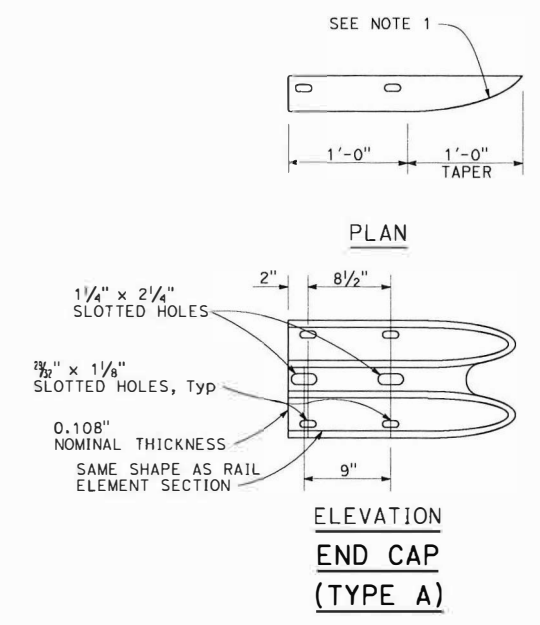
**NOTE:**  
1. Slotted holes for splice bolts to overlap ends of rail element.



**BUTTON HEAD BOLT**

L	THREAD LENGTH
1 3/8"	FULL THREAD LENGTH
2"	FULL THREAD LENGTH
10"	4" Min THREAD LENGTH
18"	4" Min THREAD LENGTH
20"	4" Min THREAD LENGTH
22"	4" Min THREAD LENGTH
26"	4" Min THREAD LENGTH
36"	4" Min THREAD LENGTH
** 2 3/4"	2" Min THREAD LENGTH
** 19"	4" Min THREAD LENGTH

\*\* For nested rail applications.



STATE OF CALIFORNIA  
DEPARTMENT OF TRANSPORTATION

**MIDWEST GUARDRAIL SYSTEM  
STANDARD HARDWARE**

NO SCALE

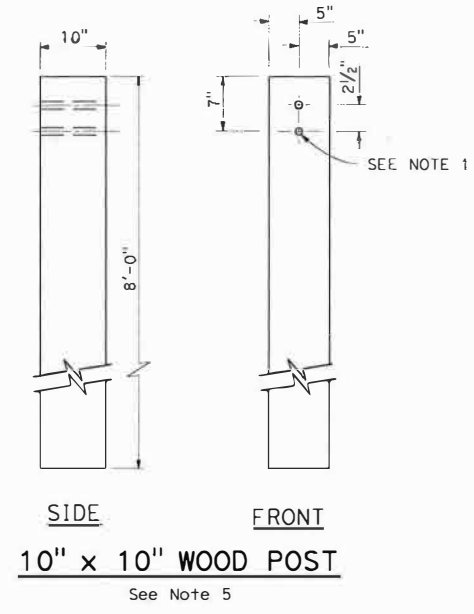
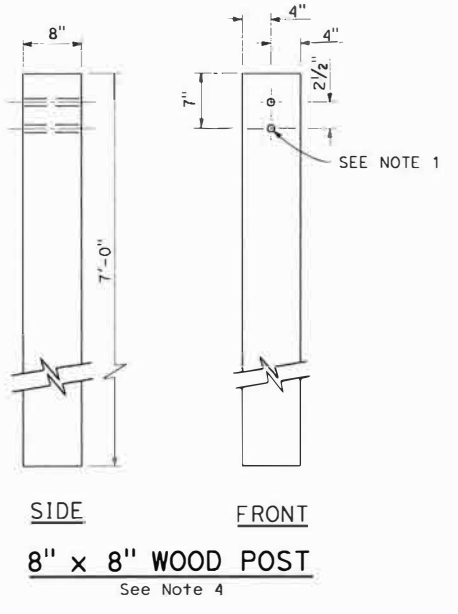
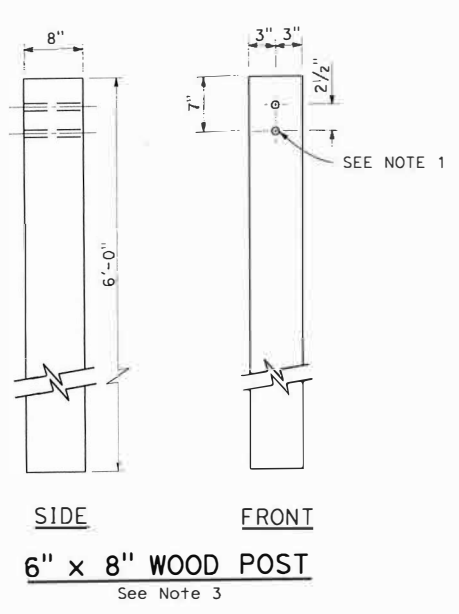
2018 STANDARD PLAN A77M1

60

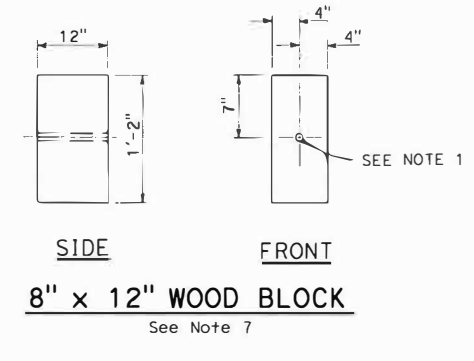
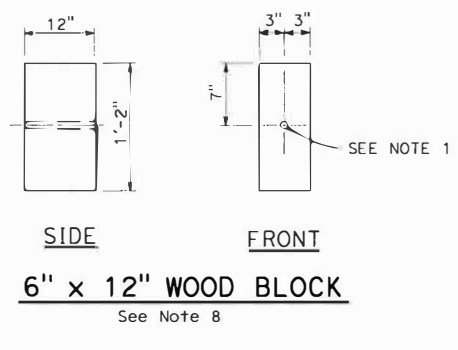
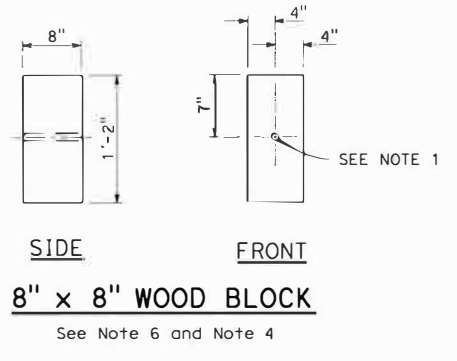
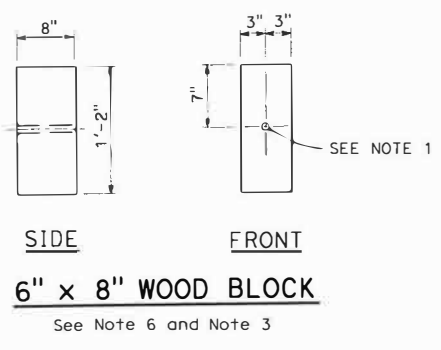
DIST.	COUNTY	ROUTE	POST MILES TOTAL PROJECT	SHEET NO.	TOTAL SHEETS

<i>Randell D. Hiatt</i> REGISTERED CIVIL ENGINEER	
May 31, 2018 PLANS APPROVAL DATE	
<small>THE STATE OF CALIFORNIA OR ITS OFFICERS OR AGENTS SHALL NOT BE RESPONSIBLE FOR THE ACCURACY OR COMPLETENESS OF SCANNED COPIES OF THIS PLAN SHEET.</small>	



- NOTES:**
- All holes in wood posts and blocks shall be  $\frac{3}{4}$ " Dia  $\pm$   $\frac{1}{16}$ ".
  - Dimensions shown for wood post are nominal.
  - This post and block combination used for standard line post sections of MGS.
  - This post and 8" x 12" block combination used for line post sections of MGS on narrow roadways.
  - This post and 8" x 12" block combination is typically used where strengthened line post sections of MGS are warranted to shield fixed objects.
  - See Standard Plan A77L3 for use of 6" x 8" and 8" x 8" wood blocks.
  - To be used with 8" x 8" x 7'-0" wood post if installed with 6" height dike.
  - To be used with 6" x 8" x 6'-0" wood post if installed with 6" height dike.



STATE OF CALIFORNIA  
 DEPARTMENT OF TRANSPORTATION  
**MIDWEST GUARDRAIL SYSTEM  
 WOOD POST AND  
 WOOD BLOCK DETAILS**  
 NO SCALE

2018 STANDARD PLAN A77N1