

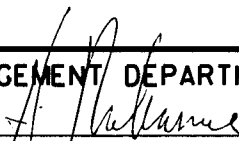
The following Standard Plans for Public Works Construction, 1997 Edition, of the American Public Works Association (Southern California Chapter) and Associated General Contractors of California (Southern California Districts) have been adopted by Orange County Resources & Development Management Department (RDMD) with conditions which shall apply to RDMD use. The conditions are listed below.

<u>APWA #</u>	<u>RDMD #</u>	<u>Name and Conditions</u>
600-1	600-1-0C	<u>Chain Link Fence and Gates</u>

1. The chain link fence fabric shall be 9-gage for all fences, regardless of height, unless otherwise specified. Fabric shall have "knuckles" (not twists) at the top and bottom.
2. Construct fence with fabric side (outward side) 0.2' (60 mm) inside R/W (right-of-way) line. Place posts at least 2.5' (750 mm) from any R/W monument. R/W shall be identified and/or staked to the satisfaction of the Engineer prior to placing fence posts.
3. Chain link fence fabric shall be attached to the top and bottom tension wires at 18" O.C. (450 mm) with 12-gage hog rings. Fabric shall be attached to posts and braces at 16" (400 mm) O.C. with 9-gage aluminum wire.
4. Entry gates on flood control facilities shall be the maximum width possible (not to exceed 20 feet (6000 mm)) within the R/W. All gates over 12 feet (3600 mm) shall be double gates.
5. Gates shall be hung by two hinges for gates 10'-0" (3000 mm) or less and by three hinges for gates over 10'-0" (3000 mm). Gate hinges shall be an industrial hanger type hinge.
6. All gate frames are to be constructed of 1/2" (35 mm) minimum, galvanized pipe.
7. Double leaf gates are to include two 5/16" x 18" (8 mm x 450 mm) galvanized chains, fillet welded to center of gate frame and cutout, conforming to Detail A on sheet 2 of 3. **Note: All fillet welds are to be coated with Cold Galvanizing Compound (95% Metallic Zinc by weight in dry film).**
8. Single leaf gates are to include two 5/16" x 18" (8 mm x 450 mm) galvanized chains, fillet welded to center of latch post and cutout, conforming to Detail B on sheet 3 of 3. **Note: All fillet welds are to be coated with Cold Galvanizing Compound (95% Metallic Zinc by weight in dry film).**
9. Materials for posts, rails, and braces shall conform to the current issue of the "Standard Specifications for Public Works Construction (Green Book) Table 206-6.2 (A)."

ORANGE COUNTY RESOURCES & DEVELOPMENT MANAGEMENT DEPARTMENT

Approved


 H. I. Nakasone, Chief Engineer

Adopted: Res. 91-1481 Revised: Res. 06-010

STD. PLAN

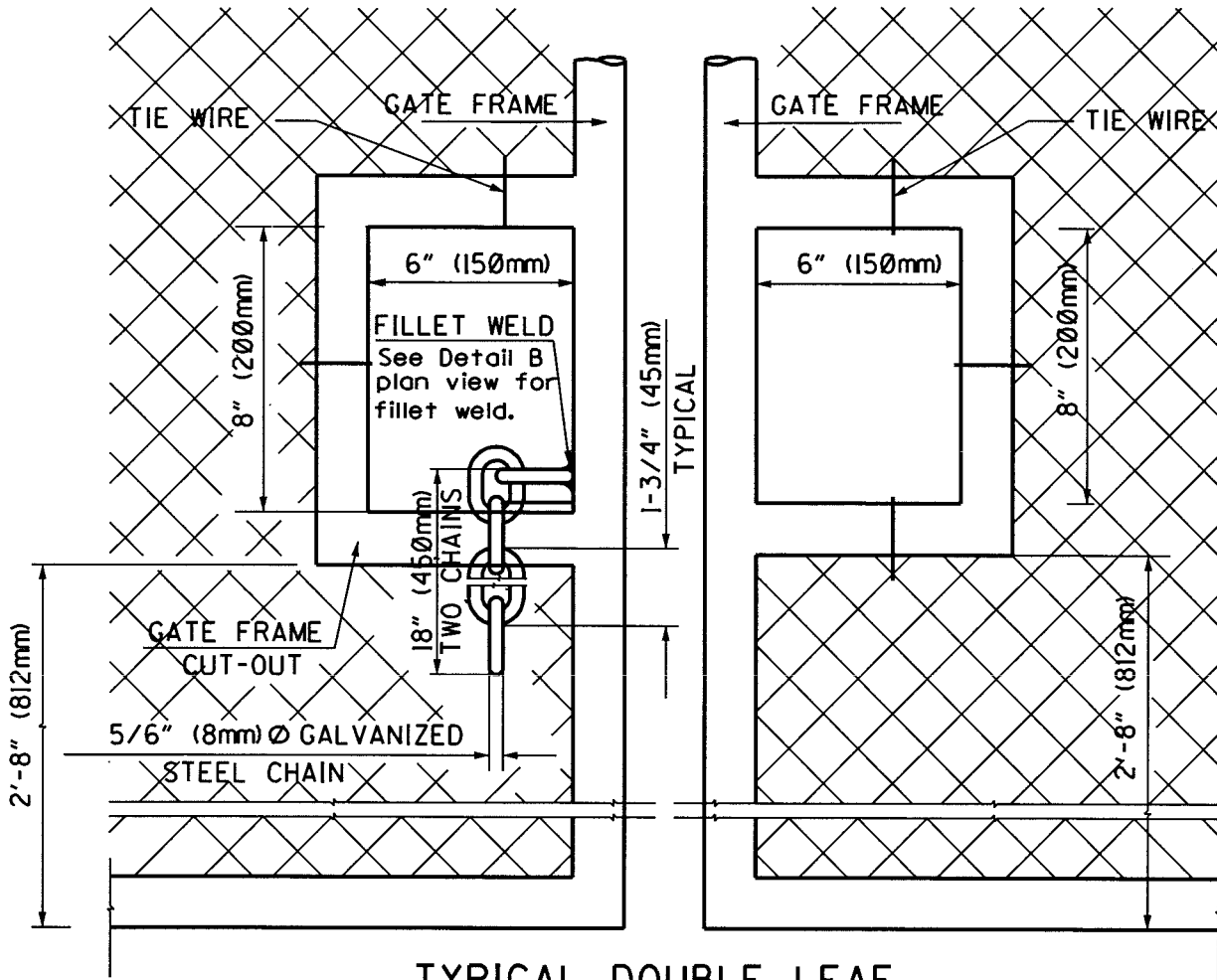
600-1-0C

APWA STANDARD PLAN-CHAIN LINK FENCE AND GATES

SHT. 1 OF 3

The following Standard Plans for Public Works Construction, 1997 Edition, of the American Public Works Association (Southern California Chapter) and Associated General Contractors of California (Southern California Districts) have been adopted by Orange County Resources & Development Management Department (RDMD) with conditions which shall apply to RDMD use. The conditions are listed below.

<u>APWA #</u>	<u>RDMD #</u>	<u>Name and Conditions</u>
600-1	600-1-0C	<u>Chain Link Fence and Gates</u>



**TYPICAL DOUBLE LEAF
GATE FRAME, CHAIN AND LOCK CUT-OUT**

DETAIL A

NTS

NOTE:

All gate frames and cut-outs shall be 1-1/2" (38mm) min. std. galv. pipe

ORANGE COUNTY RESOURCES & DEVELOPMENT MANAGEMENT DEPARTMENT

Approved

H. I. Nakasone
H. I. Nakasone, Chief Engineer

STD. PLAN

Adopted: Res. 91-1481 Revised: Res. 06-010

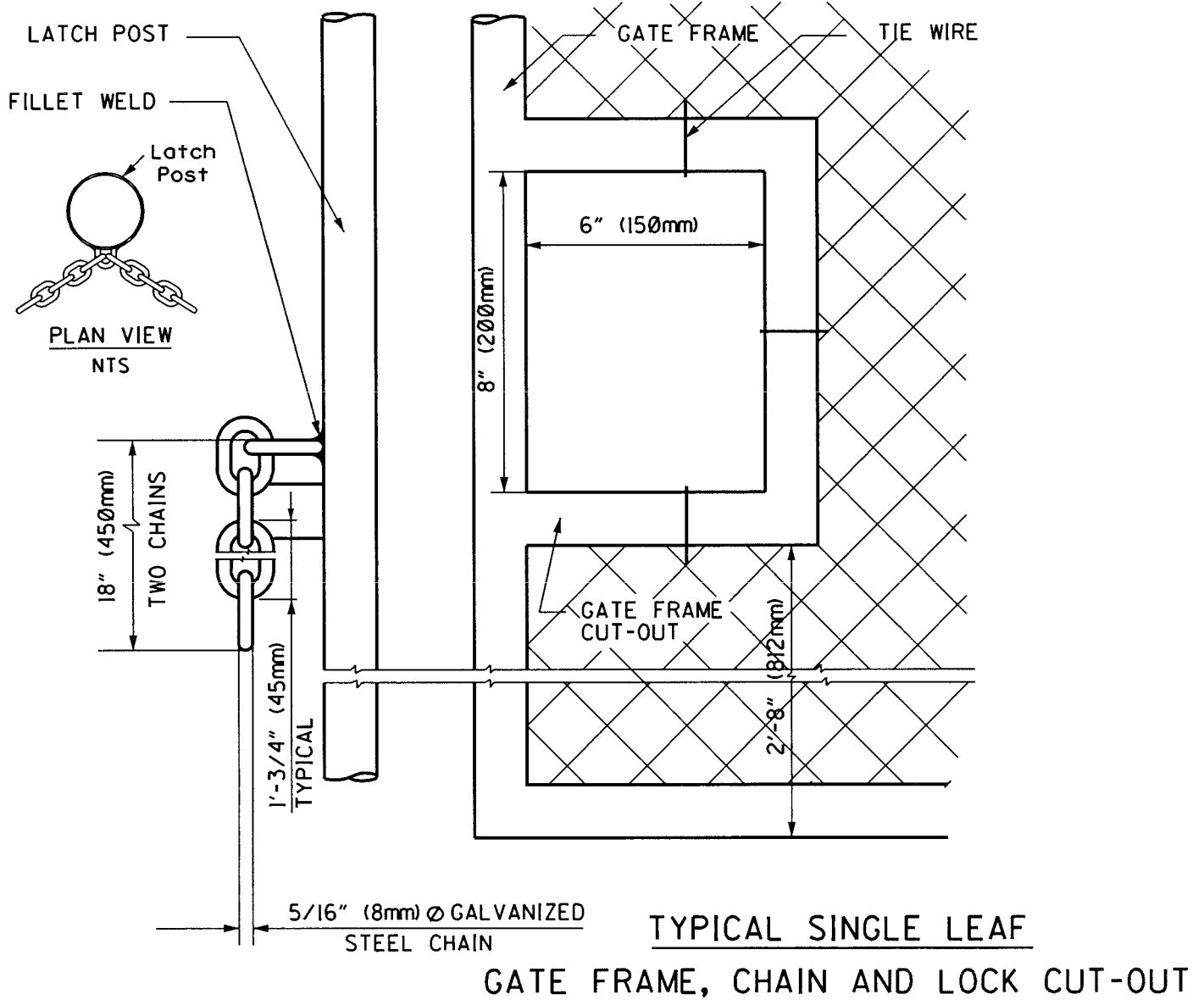
600-1-0C

APWA STANDARD PLAN-CHAIN LINK FENCE AND GATES

SHT. 2 OF 3

The following Standard Plans for Public Works Construction, 1997 Edition, of the American Public Works Association (Southern California Chapter) and Associated General Contractors of California (Southern California Districts) have been adopted by Orange County Resources & Development Management Department (RDMD) with conditions which shall apply to RDMD use. The conditions are listed below.

<u>APWA #</u>	<u>RDMD #</u>	<u>Name and Conditions</u>
600-1	600-1-0C	Chain Link Fence and Gates



NOTE:

All gate frames and cut-outs shall be 1-1/2" (38mm) min. std. galv. pipe

DETAIL B

NTS

ORANGE COUNTY RESOURCES & DEVELOPMENT MANAGEMENT DEPARTMENT

Approved

H. I. Nakasone
H. I. Nakasone, Chief Engineer

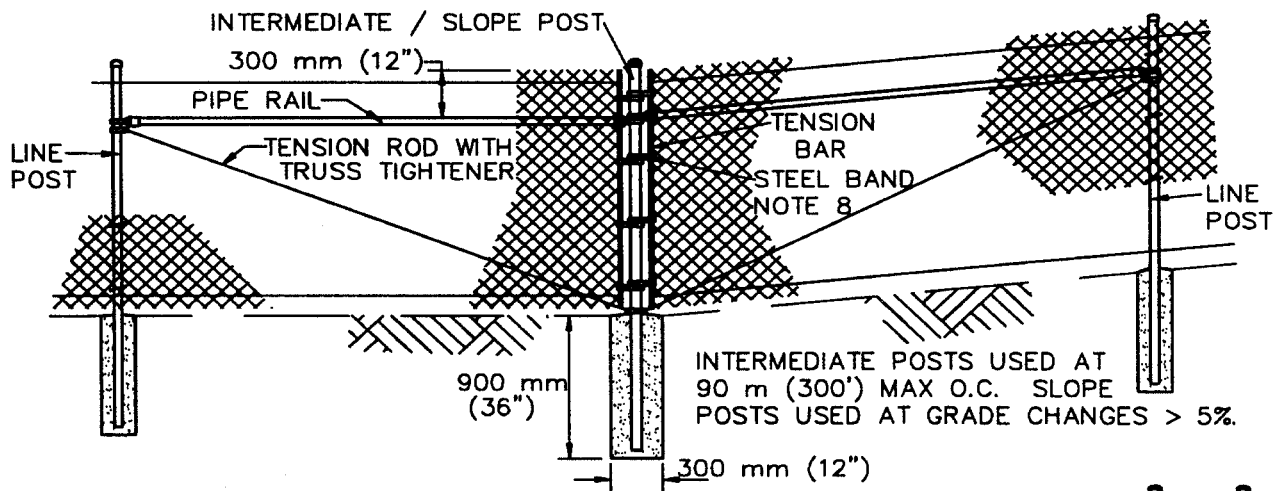
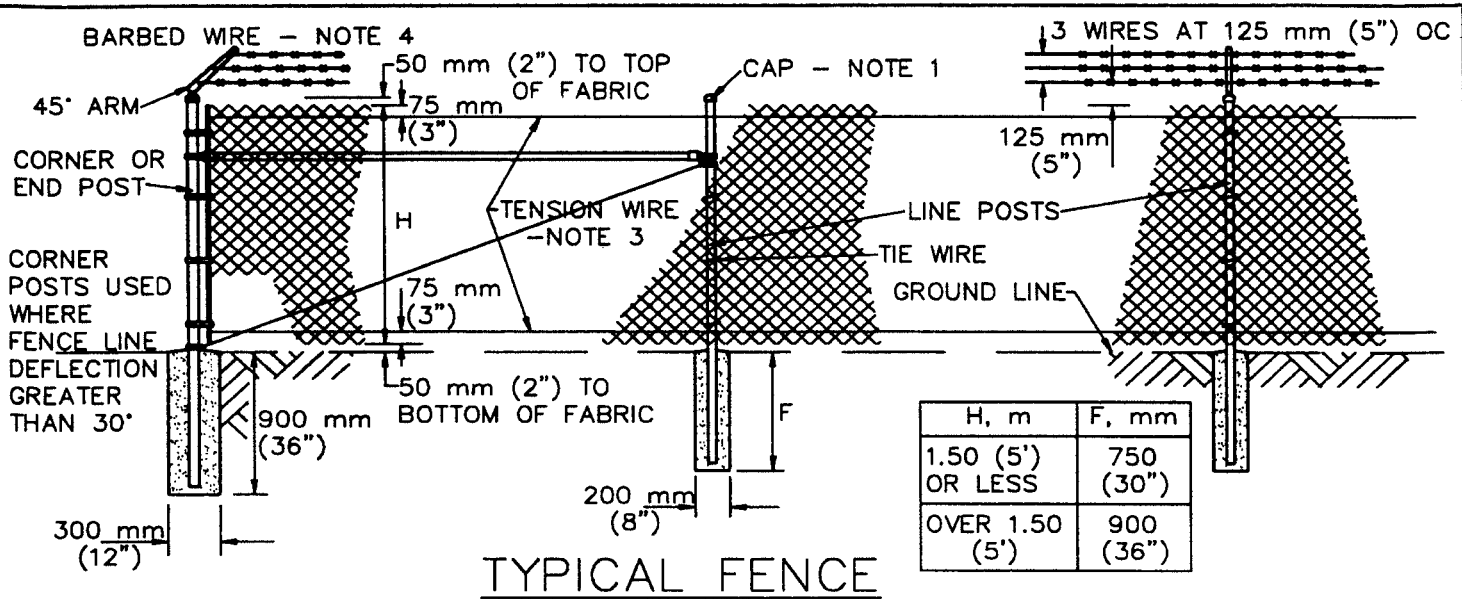
STD. PLAN

Adopted: Res. 91-1481 Revised: Res. 06-010

600-1-0C

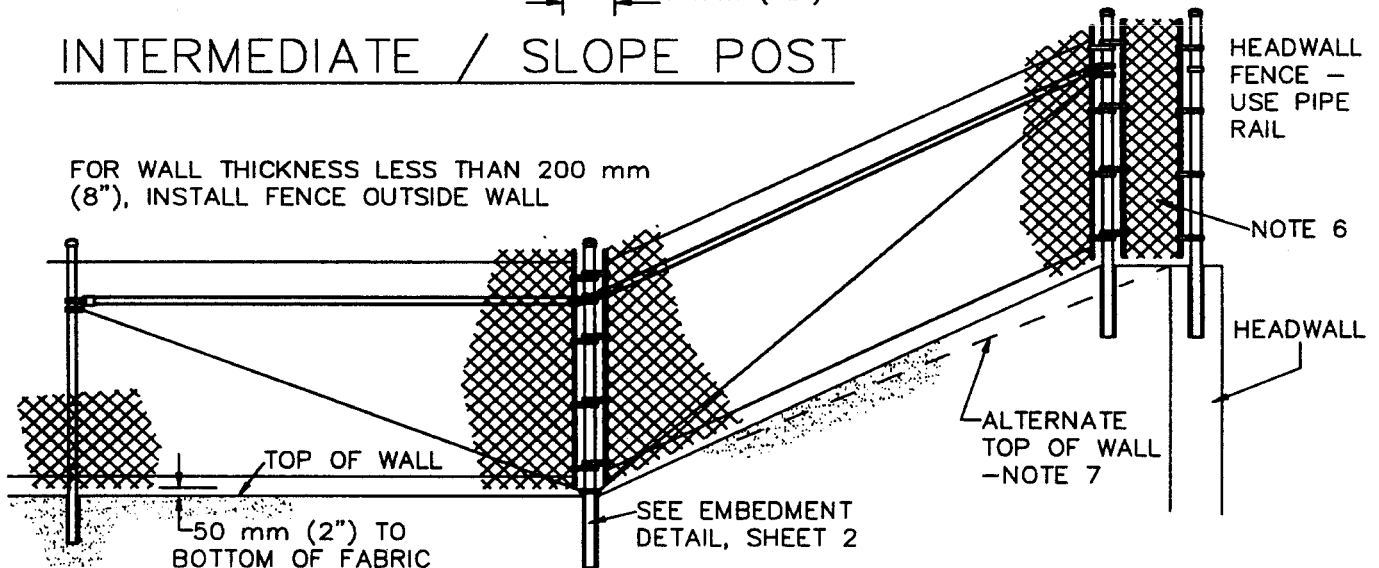
APWA STANDARD PLAN-CHAIN LINK FENCE AND GATES

SHT. 3 OF 3



INTERMEDIATE / SLOPE POST

FOR WALL THICKNESS LESS THAN 200 mm (8"), INSTALL FENCE OUTSIDE WALL

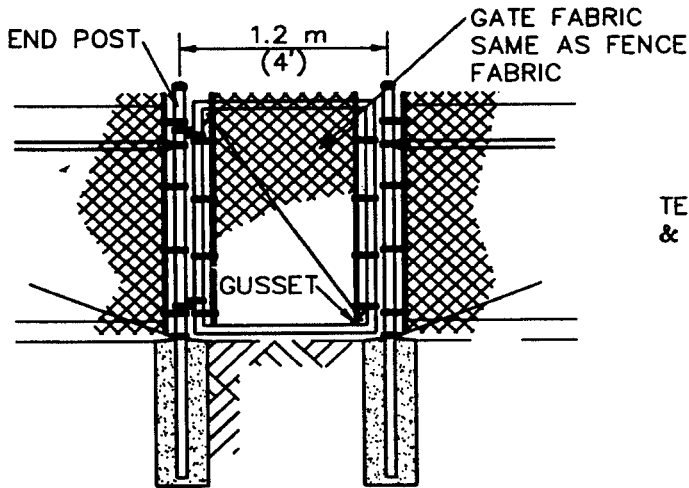
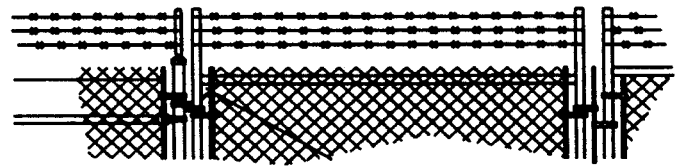
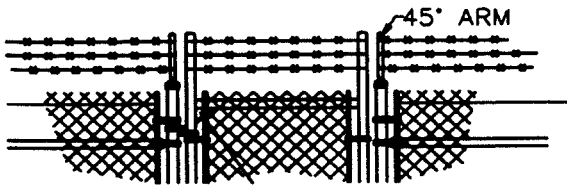


CHANNEL WALL AND WINGWALL AT HEADWALL

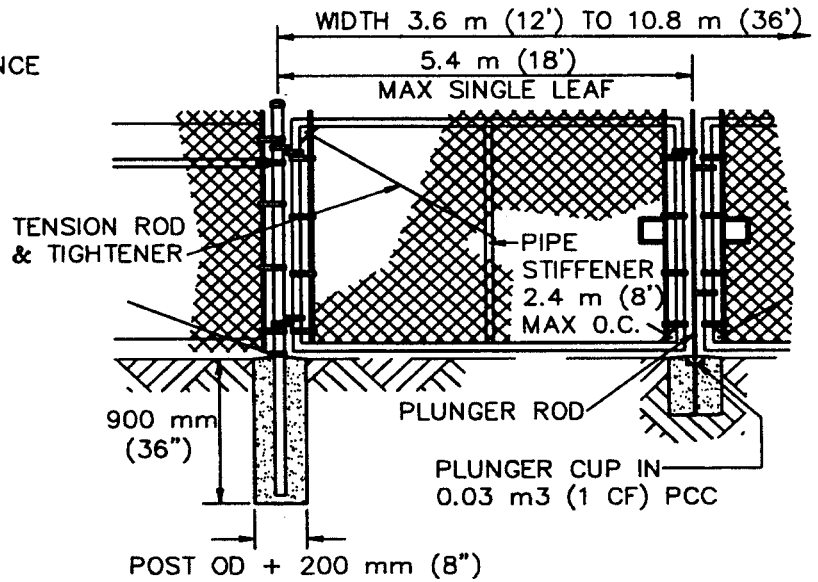
AMERICAN PUBLIC WORKS ASSOCIATION - SOUTHERN CALIFORNIA CHAPTER		
PROMULGATED BY THE PUBLIC WORKS STANDARDS INC., GREENBOOK COMMITTEE 1984 REV. 1996	<h1 style="margin: 0;">CHAIN LINK FENCE AND GATES</h1>	STANDARD PLAN METRIC <h2 style="margin: 0;">600 - 1</h2>
USE WITH STANDARD SPECIFICATIONS FOR PUBLIC WORKS CONSTRUCTION		SHEET 1 OF 3

SEE RDMD STANDARD PLAN 600-1-OC FOR CONDITIONS

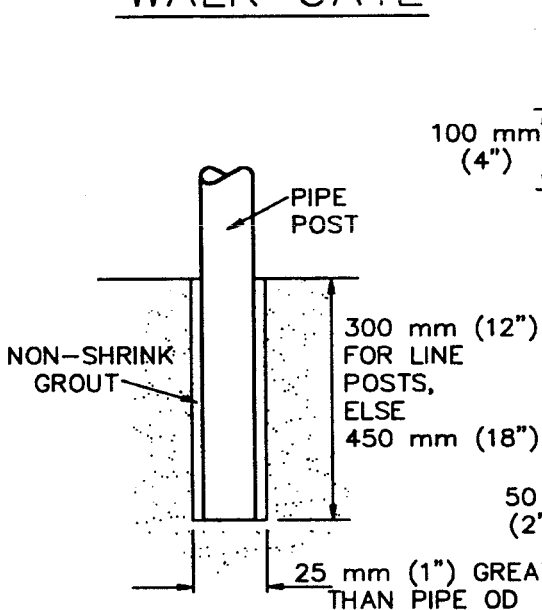
BARBED WIRE - NOTE 4



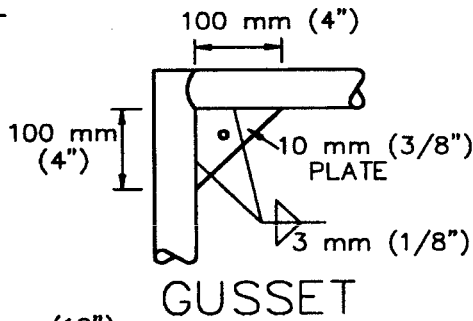
WALK GATE



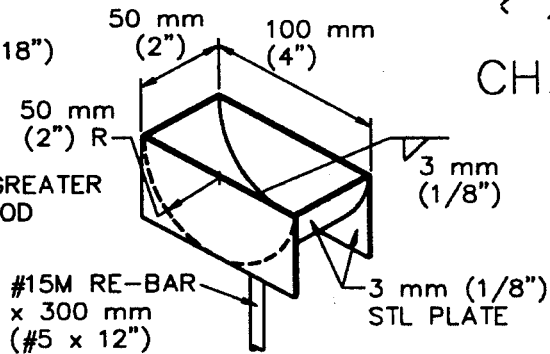
DRIVE GATE



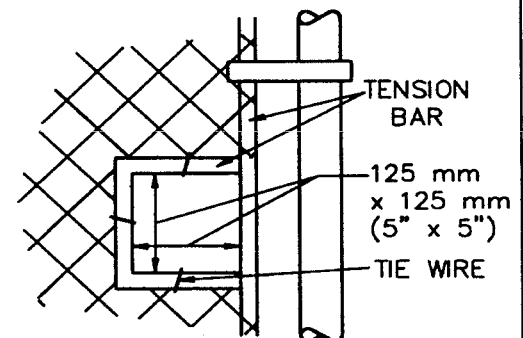
POST EMBEDMENT



GUSSET



PLUNGER CUP ISOMETRIC



CHAIN AND LOCK CUT-OUT

AMERICAN PUBLIC WORKS ASSOCIATION - SOUTHERN CALIFORNIA CHAPTER

CHAIN LINK FENCE AND GATES

STANDARD PLAN METRIC

600 - 1

SHEET 2 OF 3

SEE RDMD STANDARD PLAN 600-1-OC FOR CONDITIONS

NOTES:

1. SECURE DRIVE-FIT GALVANIZED CAP TO POST WITH 6 mm (1/4") ROUND-HEAD RIVET.
2. H DENOTES FABRIC WIDTH AND NOMINAL FENCE HEIGHT. H = 1.5 m (5') UNLESS OTHERWISE NOTED.
3. IF FENCE WITH TOP RAIL IS SPECIFIED, DELETE STEEL TENSION WIRE AT TOP, AND PIPE RAILS AT INTERMEDIATE, SLOPE, END AND CORNER POSTS. EXTEND TENSION ROD TO TOP RAIL.
4. BARBED WIRE SHALL BE USED ONLY WHEN SPECIFIED.
5. POST SPACING IS MAXIMUM 3.0 m (10').
6. FILL CLEAR OPENINGS GREATER THAN 75 mm (3") WITH FABRIC. FOR OPENINGS LESS THAN 450 mm (18"), TIE FABRIC TO POSTS.
7. USE ONE POST FOR COMBINED SLOPE AND CORNER POST IF TOP OF CHANNEL WALL IS CONSTRUCTED AS SHOWN FOR "ALTERNATE".
8. STEEL BANDS AT TENSION BARS SHALL BE 3 mm X 25 mm (1/8" x 1"), MINIMUM, SPACED AT MAXIMUM 400 mm (16").
9. DIMENSIONS SHOWN ON THIS PLAN FOR METRIC AND ENGLISH UNITS ARE NOT EXACTLY EQUAL VALUES. IF METRIC UNITS ARE USED, ALL VALUES USED FOR CONSTRUCTION SHALL BE METRIC VALUES. IF ENGLISH UNITS ARE USED, ALL VALUES USED FOR CONSTRUCTION SHALL BE ENGLISH VALUES. HOWEVER, ASTM 615 REINFORCING STEEL MAY BE SUBSTITUTED FOR ASTM 615M STEEL.

AMERICAN PUBLIC WORKS ASSOCIATION - SOUTHERN CALIFORNIA CHAPTER

CHAIN LINK FENCE AND GATES

STANDARD PLAN
METRIC
600 - 1
SHEET 3 OF 3

SEE RDMD STANDARD PLAN 600-1-OC FOR CONDITIONS