

TYPICAL FENCE ELEVATION

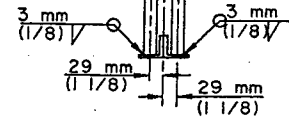
TS 32 mm x 32 mm x 1.6 mm
x 1.85 m (1 1/4" x 1 1/4"
x .0625" x 6'-1") POSTS

29 mm
(1 1/8")

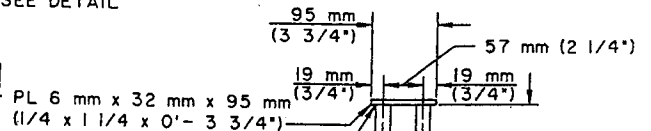
TS 25 mm x 25 mm
x 3 mm (1 x 1 x .125)

SECTION A-A

TS 25 mm x 25 mm
x 3 mm (1 x 1 x .125)

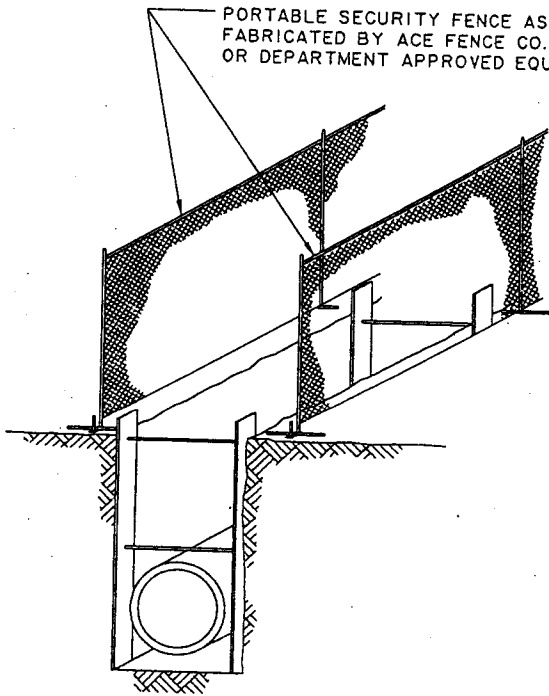


SECTION B-B

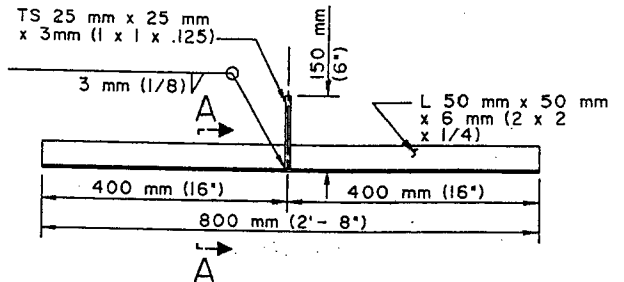


POST CAP DETAIL

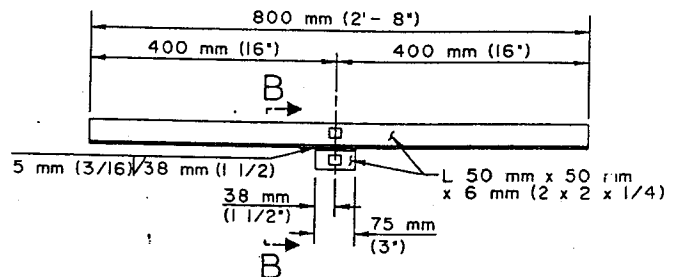
PORTABLE SECURITY FENCE AS
FABRICATED BY ACE FENCE CO.
OR DEPARTMENT APPROVED EQUAL



TYPICAL FIELD INSTALLATION



CENTER STAND DETAIL



END STAND DETAIL

LOS ANGELES COUNTY DEPARTMENT OF PUBLIC WORKS

PORTABLE SECURITY FENCE
FOR OPEN TRENCHES

STANDARD PLAN
METRIC

APPROVED

Thomas A. Pedersen
DIRECTOR OF PUBLIC WORKS

5/31/1992
DATE

1999

REVISIONS

6002-1

SHEET 1 OF 2

NOTES

1. ALL CHAIN LINK FENCE MATERIAL SHALL CONFORM TO "STANDARD SPECIFICATIONS" UNLESS OTHERWISE SPECIFIED.
2. FABRIC SHALL BE TIED TO TOP AND BOTTOM RAILS AND CENTER POSTS WITH 3mm(11 GA.) WIRE AT MAX. 375mm (15") INTERVAL.
3. POST RAIL JOINTS SHALL BE WELDED ALL AROUND WITH 3 mm (1/8") FILLET WELD.
4. IN LIEU OF GALVANIZING, POSTS MAY BE PAINTED WITH A ZINC CHROMATE PRIMER COAT AND AN ALL PURPOSE ALUMINUM FINISH COAT.
5. FENCE PANELS SHALL BE HOSED OFF WITH WATER WHEN NECESSARY TO REMOVE ACCUMULATED DIRT SO THAT A CLEAN APPEARANCE IS MAINTAINED AT ALL TIMES.
6. SAND BAGS SHALL BE PLACED ON THE END STANDS TO INCREASE STABILITY WHEN OVERTURNING IS A PROBLEM, AS DETERMINED BY THE ENGINEER.
7. DIMENSIONS SHOWN ON THIS PLAN FOR METRIC AND ENGLISH UNITS ARE NOT EXACT EQUAL VALUES. IF METRIC VALUES ARE USED, ALL VALUES USED FOR CONSTRUCTION SHALL BE METRIC VALUES. IF ENGLISH UNITS ARE USED, ALL VALUES USED FOR CONSTRUCTION SHALL BE ENGLISH UNITS.

LOS ANGELES COUNTY DEPARTMENT OF PUBLIC WORKS

PORTABLE SECURITY FENCE
FOR OPEN TRENCHES

STANDARD PLAN
METRIC
6002-1
SHEET 2 OF 2