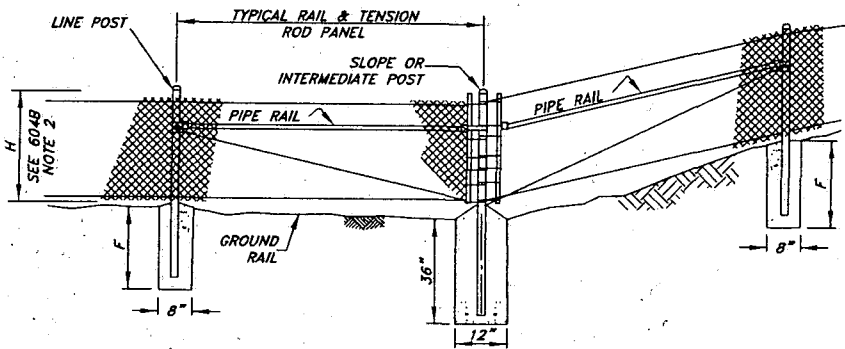


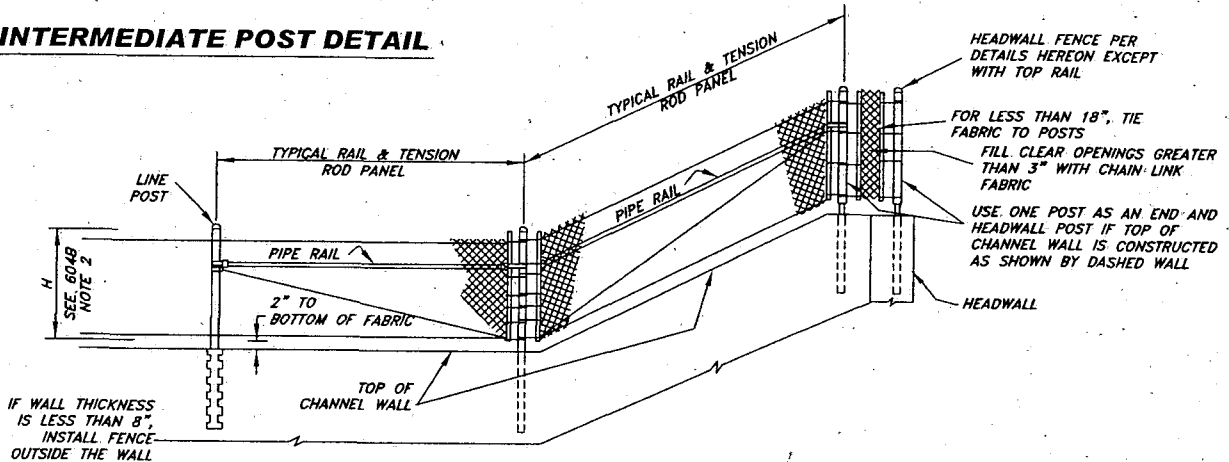
H	F
60" OR LESS	30"
OVER 60"	36"

TYPICAL FENCE ELEVATION



INTERMEDIATE AND SLOPE POSTS SHALL BE INSTALLED AT NOT MORE THAN 300' INTERVALS ALONG FENCE LINE AND AT GRADE CHANGES EXCEEDING 5% ALSO APPLICABLE TO CHANNEL FENCE

INTERMEDIATE POST DETAIL



CHANNEL WALL AND WINGWALL DETAIL AT HEADWALL

CAPITAL PROJECTS

DATE 1/05

APPROVED BY

PUBLIC WORKS DIRECTOR/
CITY ENGINEER

DIVISION
MANAGER
INITIAL

CITY OF MORENO VALLEY

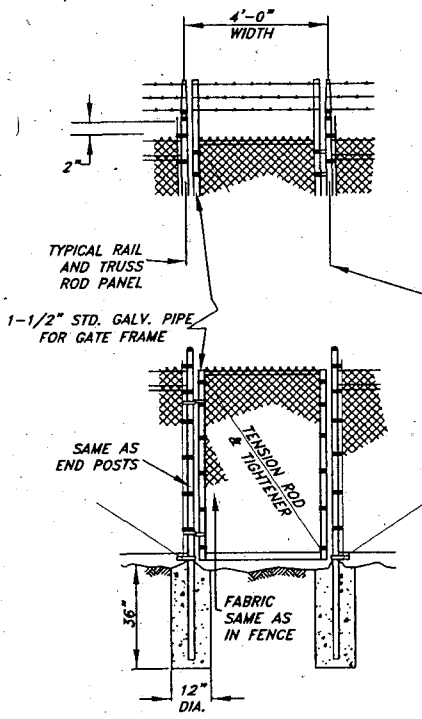
PREPARED BY CAPITAL PROJECTS

**FENCE AND GATES FOR
WALL AND CHANNEL**

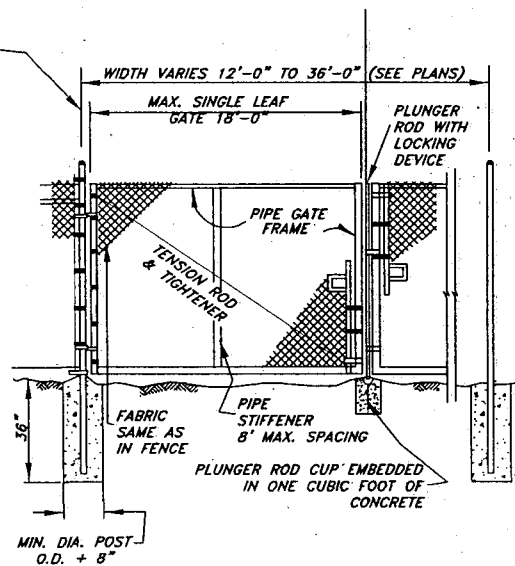
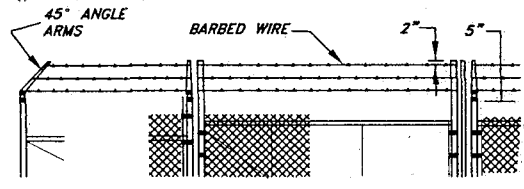
1 of 2

NO.

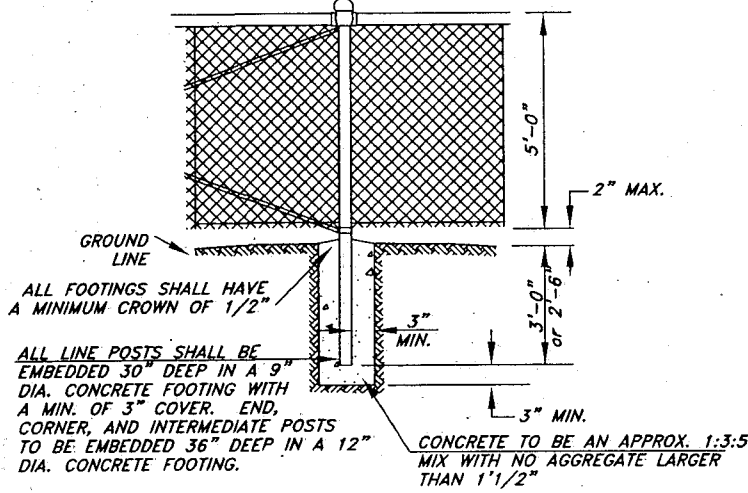
604A



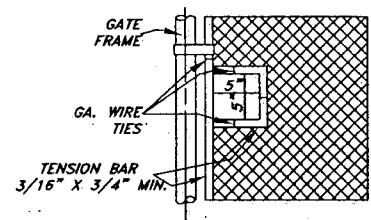
TYPICAL WALK GATE



TYPICAL DRIVE GATE



TYPICAL FENCE POST FOOTING EMBEDMENT DETAIL



DETAIL OF CUT-OUT FOR CHAIN AND LOCK

NOTES:

- 1.) SECURE DRIVE FIT GALVANIZED CAP TO POST WITH 1/4" ROUND HEAD RIVET.
- 2.) H DENOTES FABRIC WIDTH AND NORMAL FENCE HEIGHT. H SHALL BE 5'-0" UNLESS OTHERWISE SPECIFIED.
- 3.) IF CHAIN LINK FENCE WITH TOP RAIL IS SPECIFIED, DELETE STEEL TENSION WIRE AT THE TOP AND THE PIPE RAILS AT THE INTERMEDIATE, END AND CORNER POSTS. EXTEND TENSION ROD TO THE TOP RAIL.
- 4.) BARBED WIRE SHALL BE USED ONLY WHEN SPECIFIED.
- 5.) ALL DATA SHOWN ON TYPICAL DETAILS SHALL BE APPLICABLE TO OTHER PERTINENT DETAILS.
- 6.) THE GALVANIZING OF THE FENCE FABRIC SHALL PRODUCE A ZINC COATING WEIGHING NOT LESS THAN 1.2 OZ. PER SQ. FT.

CAPITAL PROJECTS	DATE	1/05	CITY OF MORENO VALLEY	
APPROVED BY PUBLIC WORKS DIRECTOR/ CITY ENGINEER	DIVISION MANAGER INITIAL 	PREPARED BY CAPITAL PROJECTS		2 of 2
			HIGHWAY CHAIN LINK FENCE AND GATES	NO. 604B