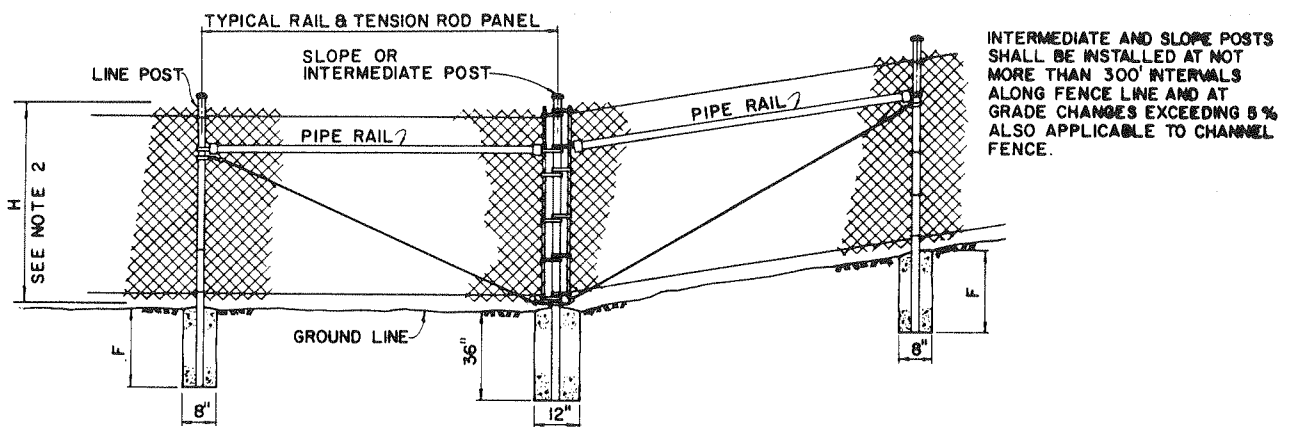
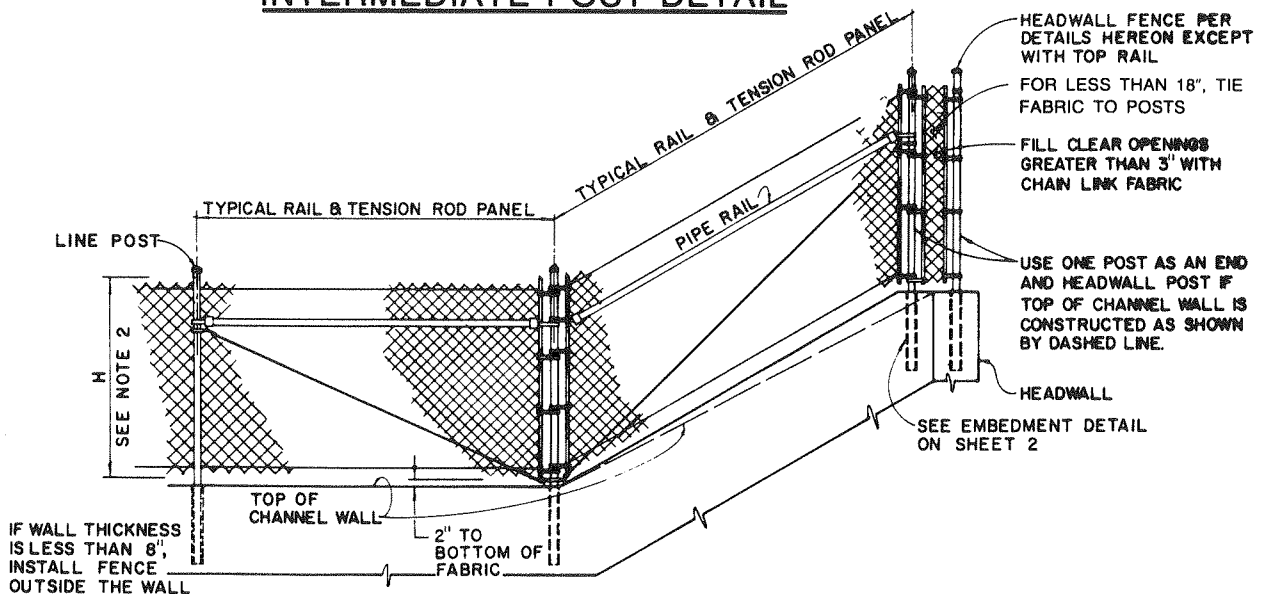


TYPICAL FENCE ELEVATION



INTERMEDIATE POST DETAIL



CHANNEL WALL AND WINGWALL DETAIL AT HEADWALL

CITY OF RANCHO CUCAMONGA, CALIFORNIA

APPROVED BY:

W. Mail 6-1-92
 CITY ENGINEER DATE
 R.C.E. 24953

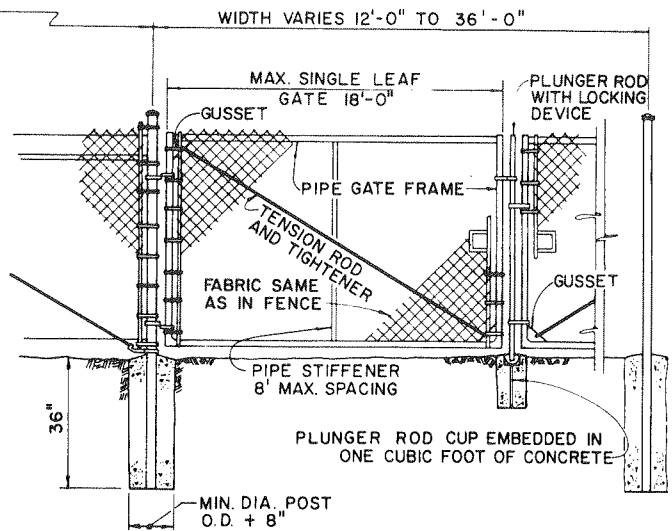
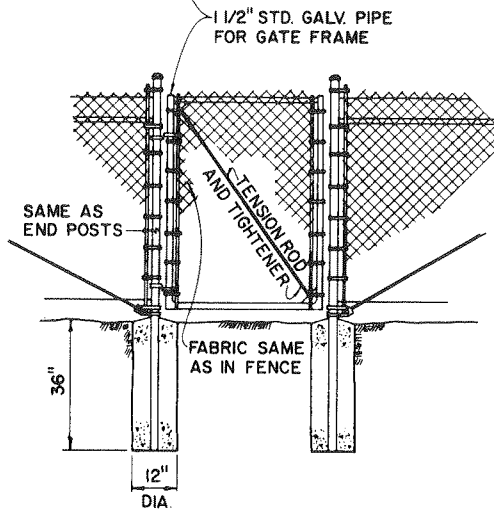
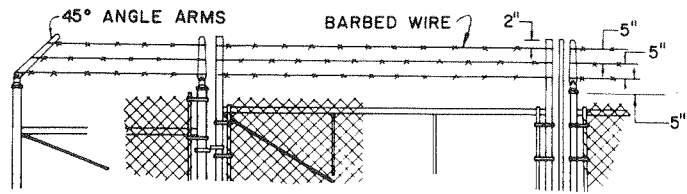
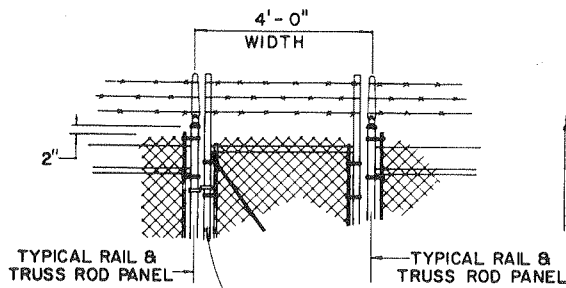
CHAIN LINK FENCE AND GATES

USE WITH STANDARD SPECIFICATIONS FOR PUBLIC WORKS CONSTRUCTION

STANDARD PLAN

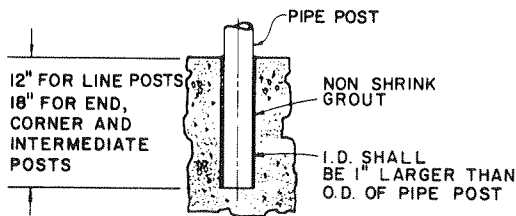
607

SHEET 1 OF 2

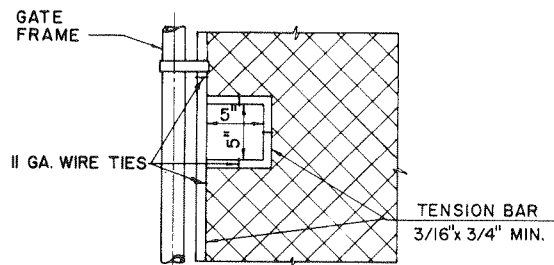


TYPICAL WALK GATE

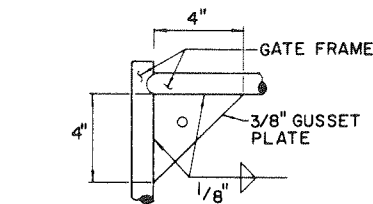
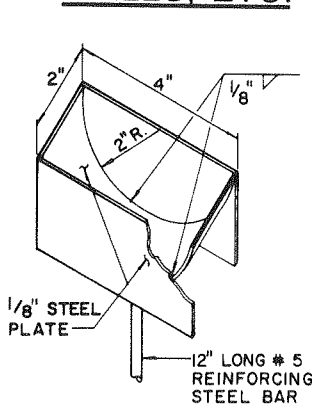
TYPICAL DRIVE GATE



POST EMBEDMENT DETAIL IN CONCRETE HEADWALLS, RETAINING WALLS, CHANNEL WALLS, ETC.



DETAIL OF CUT-OUT FOR CHAIN AND LOCK



GUSSET DETAIL

PLUNGER ROD CUP DETAIL

NOTES:

- 1 SECURE DRIVE FIT GALVANIZED CAP TO POST WITH 1/4" ROUND HEAD RIVET.
- 2 H DENOTES FABRIC WIDTH AND NOMINAL FENCE HEIGHT. H SHALL BE 5'-0" UNLESS OTHERWISE SPECIFIED.
- 3 IF CHAIN LINK FENCE WITH TOP RAIL IS SPECIFIED, DELETE STEEL TENSION WIRE AT THE TOP AND THE PIPE RAILS AT INTERMEDIATE, END AND CORNER POSTS. EXTEND TENSION ROD TO THE TOP RAIL.
- 4 BARBED WIRE SHALL BE USED ONLY WHEN SPECIFIED.
- 5 ALL DATA SHOWN ON TYPICAL DETAILS SHALL BE APPLICABLE TO OTHER PERTINENT DETAILS.

CITY OF RANCHO CUCAMONGA, CALIFORNIA

APPROVED BY:

W. Daniel 6-1-92
CITY ENGINEER DATE
R.C.E. 24953

CHAIN LINK FENCE AND GATES

USE WITH STANDARD SPECIFICATIONS FOR PUBLIC WORKS CONSTRUCTION

STANDARD PLAN

607

SHEET 2 OF 2