

8 mm (5/16") GALV. CABLE THRU 10 mm (3/8") HOLES IN INTERMEDIATE POSTS. ANCHOR CABLE AT END POSTS AND POSTS ADJACENT TO ELECTROLIER PANELS OR DECK OR WALL JOINTS WITH STUD SOCKET ASSEMBLY OR 13 mm (1/2") WELDED EYEBOLT AND CRIMPED SLEEVE CLAMP. PROVIDE 38 mm (1 1/2") MIN. TAKE UP AT EACH ANCHORAGE.

SEE SHEET 4 OF 4 FOR NOTES

LOS ANGELES COUNTY DEPARTMENT OF PUBLIC WORKS

CHAIN LINK RAILING

STANDARD PLAN  
METRIC

APPROVED

*Thomas A. Gilman*  
DIRECTOR OF PUBLIC WORKS

5/31/1992  
DATE

1999

REVISIONS

6103-1  
SHEET 1 OF 4

35 mm  $\varnothing$   
(1 3/8"  $\varnothing$ )  
HOLE TYP.

TS 76x51x4.8  
(TS 3x2x0.1875)

65 mm  
(2 1/2")  
65 mm  
(2 1/2")  
5 mm  
(3/16")

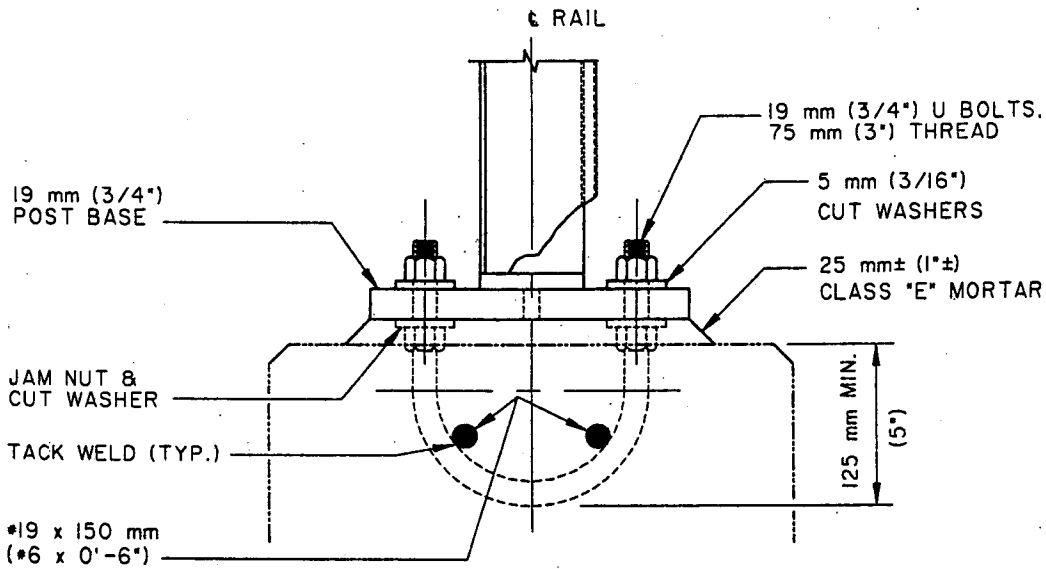
10 mm VENT  $\bullet$  BASE  
(3/8")

PLATE 200x19x200  
(PL 8"x3/4"x0'-8")

L 89x64x6.4  
(L 3 1/2"x2 1/2"x1/4")  
 $\bullet$  END POST ONLY

25 mm (1")  
RADIUS

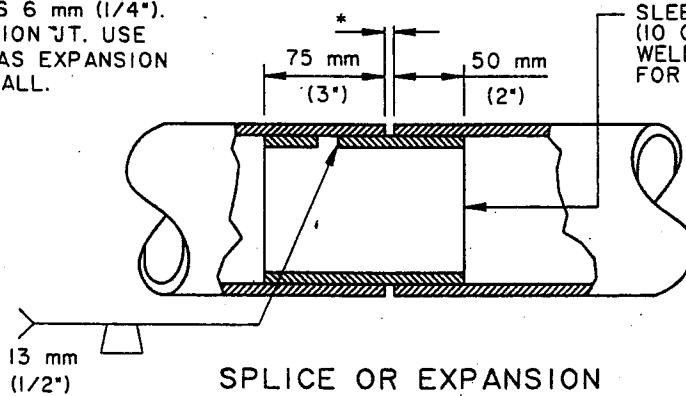
### POST BASE



### ANCHORAGE DETAIL

(SEE NOTE 9)

\* FOR PIPE SPLICES 6 mm (1/4").  
FOR PIPE EXPANSION JT. USE  
SAME DIMENSION AS EXPANSION  
JT. IN DECK OR WALL.



### SPLICE OR EXPANSION JOINT DETAIL

SEE SHEET 4 OF 4 FOR NOTES

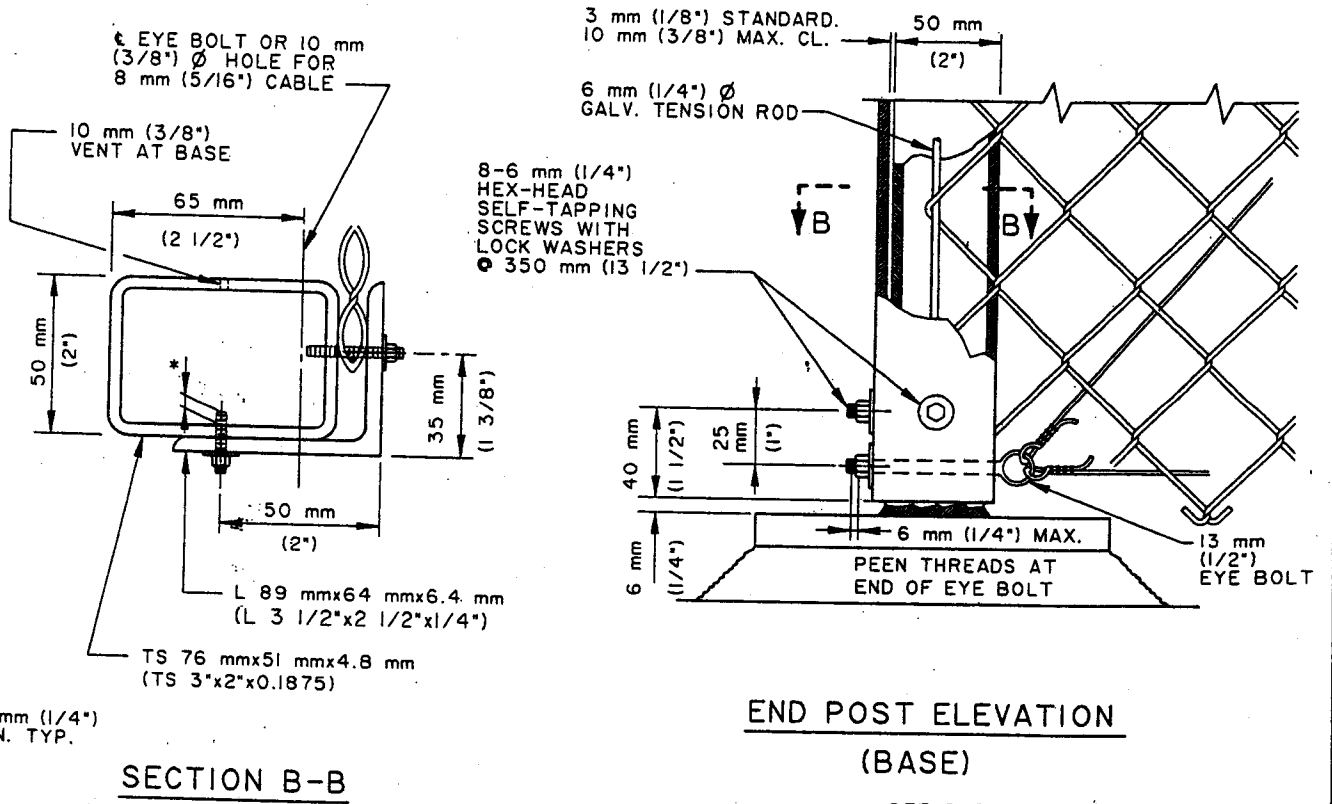
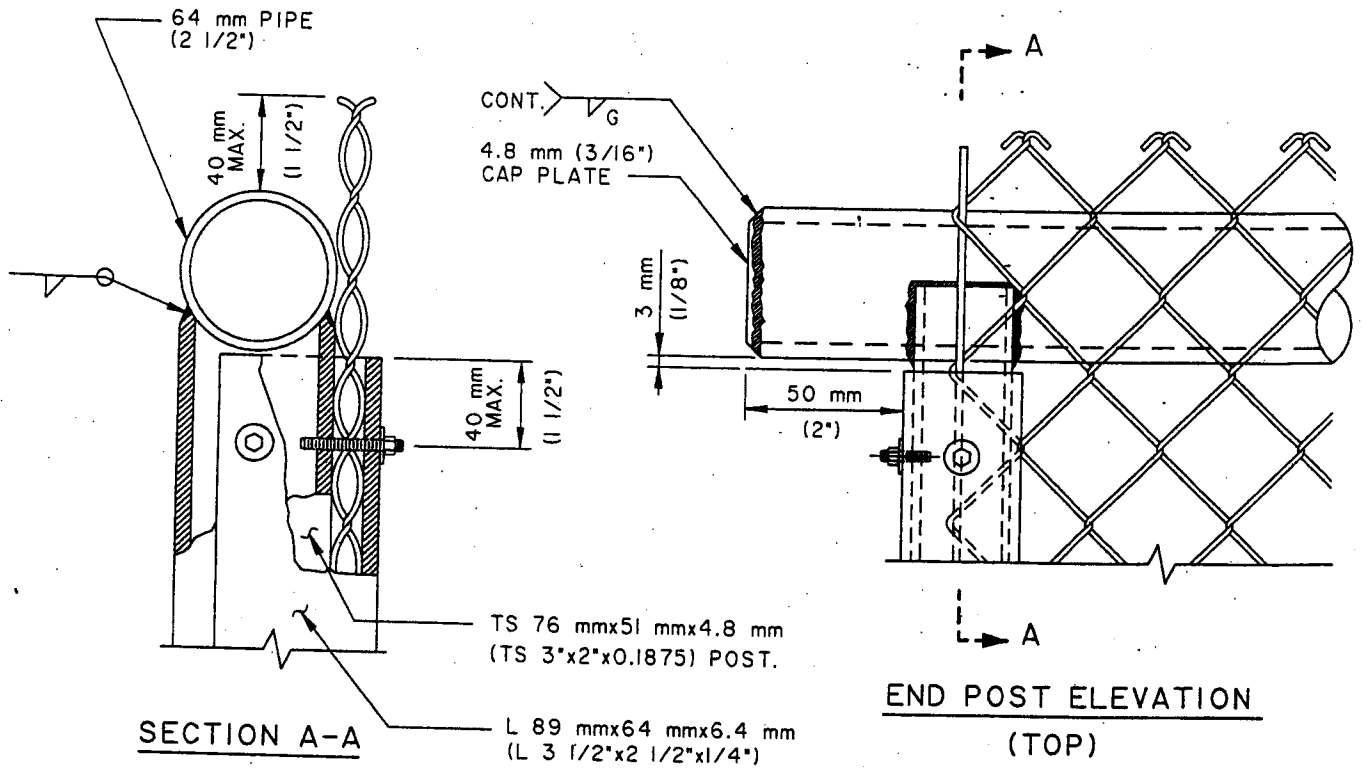
LOS ANGELES COUNTY DEPARTMENT OF PUBLIC WORKS

CHAIN LINK RAILING

STANDARD PLAN  
METRIC

6103-1

SHEET 2 OF 4



SEE SHEET 4 OF 4 FOR NOTES

LOS ANGELES COUNTY DEPARTMENT OF PUBLIC WORKS

CHAIN LINK RAILING

STANDARD PLAN  
METRIC

6103-1

SHEET 3 OF 4

NOTES:

1. RAILING ASSEMBLY EXCEPT CHAIN LINK FABRIC TO BE GALVANIZED AFTER FABRICATION.
2. POSTS SHALL BE VERTICAL.
3. RAILING SHALL CONFORM TO HORIZ. AND VERT. ALIGNMENT. WHEN RAILING IS PLACED ON A CURVED HORIZ. ALIGNMENT WITH RADIUS 45 m (150') OR LESS THREAD THE 8 mm (5/16") CABLE THRU 10 mm (3/8") WELDED EYE RODS EMBEDDED 100 mm (4") INTO THE TOP OF THE CONC. PARAPET AND EQUALLY SPACED TO LIMIT THE MIDORDINATE DISTANCE BETWEEN THE 8 mm (5/16") CABLE AND THE CURVE TO 25 mm (1") MAXIMUM. HORIZ. PIPE SHALL BE BENT TO CONFORM TO HORIZ. ALIGNMENT IF RADIUS IS 45 m (150') OR LESS AND MAY BE ON 3 m (10') CHORDS IF RADIUS IS OVER 45 m (150').
4. HORIZ. PIPE SHALL BE CONTINUOUS OVER NOT LESS THAN TWO INTERMEDIATE POSTS. EXCEPT THAT A STARTER LENGTH IS PERMITTED AT EXPANSION JOINTS, ELECTROLIERS AND OTHER RAIL DISCONTINUITIES.
5. WHEN RAIL IS ON SLOPE. PLACE FABRIC PARALLEL TO SLOPE.
6. SECURE FABRIC TO INTERMEDIATE POSTS. HORIZ. PIPE, TENSION WIRE AND CABLE WITH 3.76 mm (9 GA.) WIRE TIES AT 305 mm (12").
7. PROVIDE THIMBLES AT ALL CABLE LOOPS.
8. SEE BRIDGE PLANS FOR LIMITS OF CHAIN LINK RAILING.
9. FOR REINF. STEEL NOT SHOWN SEE BRIDGE PLANS.
10. ALTERNATE DETAILS MAY BE SUBMITTED BY THE CONTRACTOR FOR APPROVAL BY THE ENGINEER.
- II. DIMENSIONS SHOWN ON THE PLAN FOR METRIC AND ENGLISH UNITS ARE NOT EXACTLY EQUAL VALUES. IF METRIC UNITS ARE USED, ALL VALUES USED FOR CONSTRUCTION SHALL BE METRIC VALUES. IF ENGLISH UNITS ARE USED, ALL VALUES USED FOR CONSTRUCTION SHALL BE ENGLISH VALUES.

LOS ANGELES COUNTY DEPARTMENT OF PUBLIC WORKS

CHAIN LINK RAILING

STANDARD PLAN  
METRIC  
6103-1  
SHEET 4 OF 4