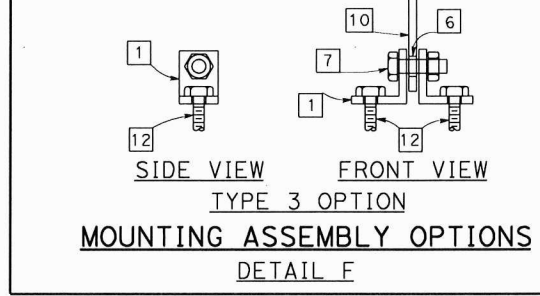
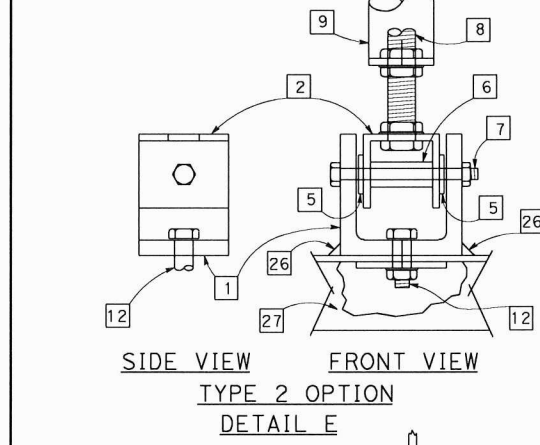
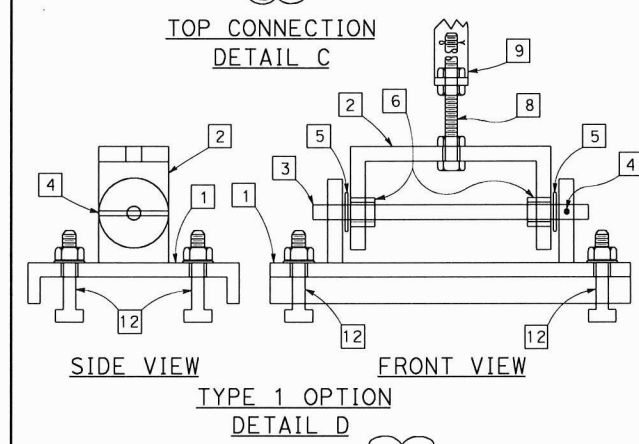
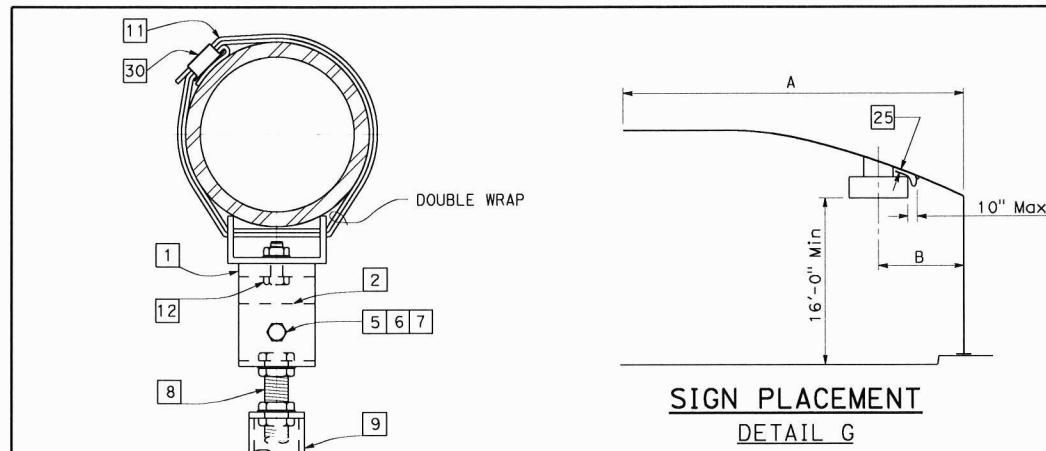
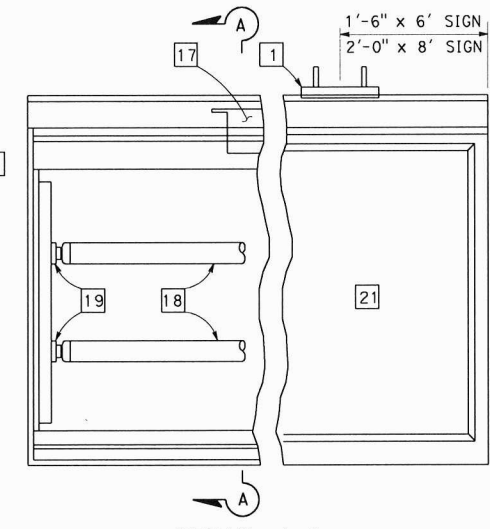


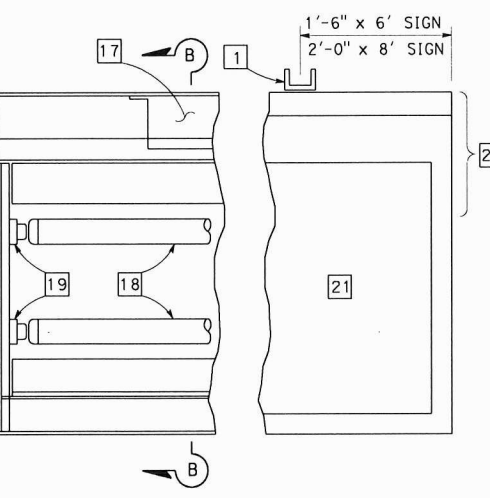
529



MOUNTING ASSEMBLY OPTIONS
DETAIL F



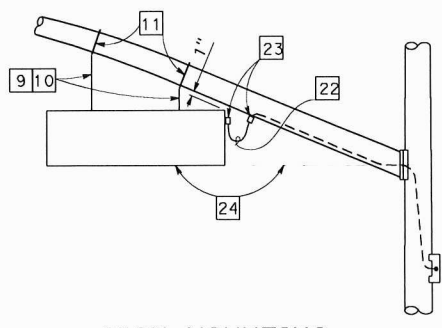
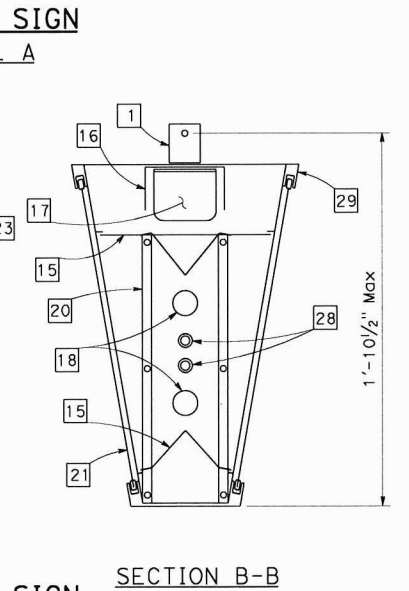
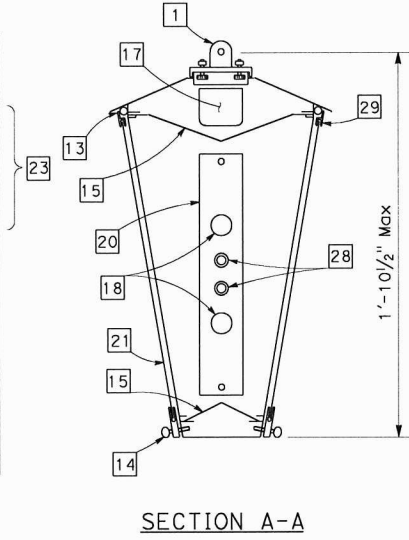
TYPE A SIGN
DETAIL A



TYPE B SIGN
DETAIL B

SIGN PLACEMENT

A	B	
PROJECTED LENGTH	6'-0" SIGN	8'-0" SIGN
20'-0"	7'-10"	8'-10"
25'-0"	9'-2"	10'-2"
30'-0"	9'-6"	10'-6"
35'-0"	10'-6"	11'-6"
40'-0"		
45'-0"		
50'-0"	12'-6"	13'-6"
55'-0"		
60'-0"		
65'-0"		



SIGN MOUNTING
DETAIL H

LEGEND:

- 1 LOWER MOUNTING ASSEMBLY WITH GASKET.
- 2 UPPER MOUNTING ASSEMBLY.
- 3 ROD, 1/2" Ø, STAINLESS STEEL.
- 4 LOCKING PIN, STEEL.
- 5 FLAT WASHER, STAINLESS STEEL.
- 6 BUSHING, BRONZE.
- 7 BOLT, 1/4" Ø STAINLESS STEEL, WITH SELF-LOCKING NUT.
- 8 BOLT, 1/2" Ø STAINLESS STEEL, WITH THREE NUTS, AND COTTER KEY. LENGTH AS REQUIRED FOR PROPER MOUNTING OF SIGN.
- 9 BRACKET, 1/4" X 1 1/2" MINIMUM, LENGTH VARIABLE.
- 10 BRACKET, 2-PIECE ADJUSTABLE. 1/4" X 1 1/2" MINIMUM. TWO 1/2" Ø HEXAGON HEAD BOLTS WITH NUTS AND LOCKWASHERS.
- 11 3/4" X 0.020" MINIMUM ROUNDED EDGE STAINLESS STEEL STRAP WITH 2" LONG BEND UNDER BUCKLE. IF ATTACHING TO A MULTISIDED SECTION BEND UNDER SECTION SHALL BE LONG ENOUGH TO CONTACT AT LEAST 3 CORNERS.
- 12 MOUNTING BOLT, 1/4" Ø MINIMUM, WITH NUT AND LOCKWASHER, OR SELF-LOCKING NUT AND COTTER KEY.
- 13 CONTINUOUS HINGE.
- 14 THUMB SCREW, 5/8" Ø MINIMUM TWO PER SIDE ON 4'-0" CENTERS.
- 15 REFLECTOR, 0.040" MINIMUM THICKNESS.
- 16 ALUMINUM STIFFENER.
- 17 FLUORESCENT BALLAST (2 REQUIRED).
- 18 LAMP, F72T12CW FOR 6'-0" SIGN F96T12CW FOR 8'-0" SIGN
- 19 LAMP HOLDER.
- 20 LAMP HOLDER TURRET.
- 21 SIGN PANEL, 1'-3" MINIMUM HEIGHT. MESSAGE IS SHOWN ELSEWHERE.
- 22 CORD, 16/3 TYPE SJT. CONTINUOUS FROM SIGN TERMINAL BLOCK TO SIGNAL HEAD MOUNTING TERMINAL COMPARTMENT. FORM A 1'-0" DRIP LOOP BETWEEN SIGN AND SIGNAL MAST ARM.
- 23 CORD CONNECTOR, 90° ANGLE CONNECTOR AT THE SIGN LOCATED IN UPPER 1/3 OF THE SIGN AND STRAIGHT CONNECTOR AT THE SIGNAL MAST ARM. DRILL AND TAP BOTTOM OF THE SIGNAL MAST ARM.
- 24 ADJUST FIXTURE LEVEL NO LOWER THAN CENTER OF SIGNAL MAST ARM CONNECTION.
- 25 APPROXIMATE CLEARANCE, 1".
- 26 1/4" FILLET WELD, 1 1/4" LONG.
- 27 SIGN FRAME.
- 28 FUSE HOLDER AND FUSE.
- 29 CLOSE CELL NEOPRENE GASKET (CONTINUOUS).
- 30 STAINLESS STEEL STRAP BUCKLE.

Dist	COUNTY	ROUTE	POST MILES TOTAL PROJECT	SHEET NO.	TOTAL SHEETS

Stanley P. Johnson
REGISTERED CIVIL ENGINEER

May 31, 2018
PLANS APPROVAL DATE

THE STATE OF CALIFORNIA OR ITS OFFICERS OR AGENTS SHALL NOT BE RESPONSIBLE FOR THE ACCURACY OR COMPLETENESS OF SCANNED COPIES OF THIS PLAN SHEET.

REGISTERED PROFESSIONAL ENGINEER
Stanley P. Johnson
No. CS7793
Exp. 3-31-20
CIVIL
STATE OF CALIFORNIA

2018 STANDARD PLAN ES-7P

STATE OF CALIFORNIA
DEPARTMENT OF TRANSPORTATION

**ELECTRICAL SYSTEMS
(INTERNALLY ILLUMINATED
STREET NAME SIGN)**

NO SCALE

ES-7P