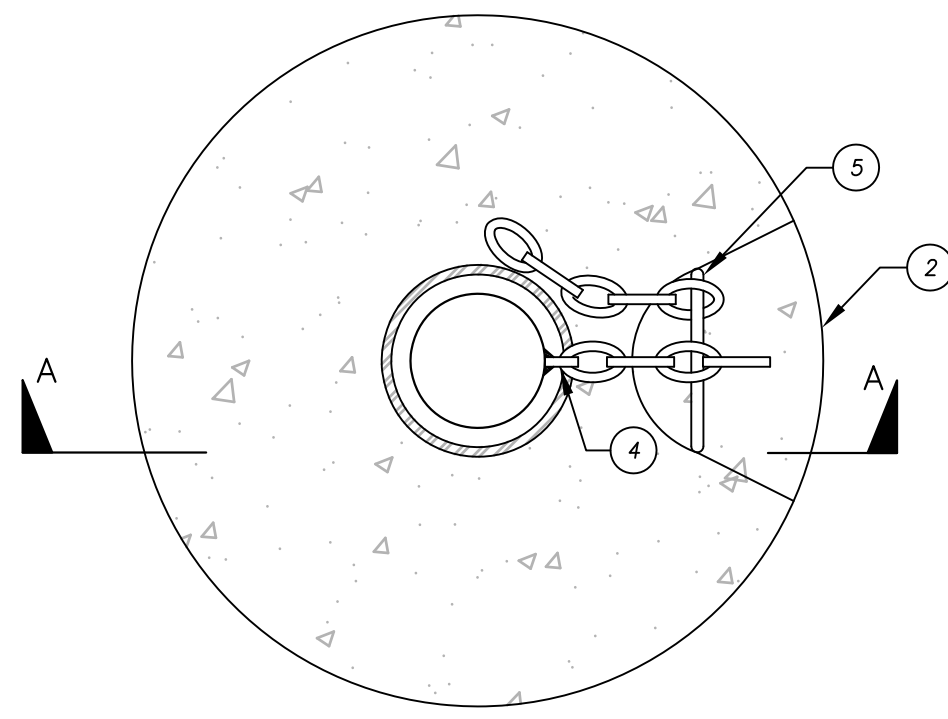
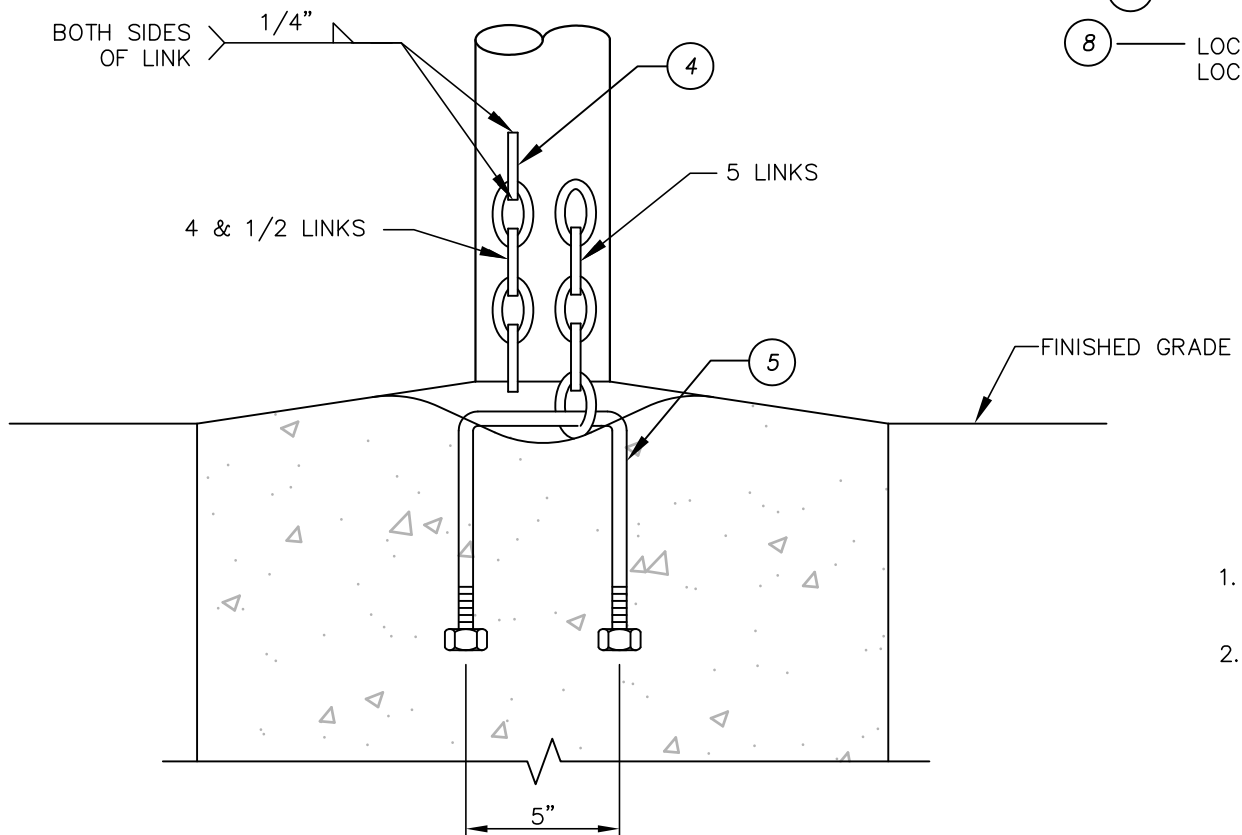


SECTION A-A



PLAN VIEW

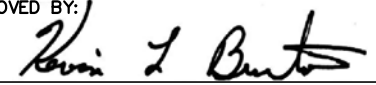


FRONT VIEW

ITEM	MATERIALS
1	3.5" SCH 40 BLACK STEEL PIPE.
2	ANNULAR CONCRETE POST ANCHOR. CAST IN PLACE.
3	3/4" CRUSHED ROCK.
4	LOCKING ASSEMBLY MADE OF 4 & 1/2 LINKS OF 3/8" GRADE 80 STAINLESS CHAIN. WELD THE 1/2 LINK TO POST.
5	EMBED 3/8" DIA. 5" WIDE STAINLESS STEEL U-BOLT WITH NUTS EMBEDDED INTO CONCRETE POST ANCHOR. LOOP 5 LINK STAINLESS CHAIN SEGMENT OF 3/8" GRADE 80 CHAIN ONTO U-BOLT AS SHOWN IN DETAIL. SEE NOTE 2.
6	5" SCH 40, WELDED STEEL END CAP.
7	5" SCH 40, HOT-DIP GALVANIZED STEEL PIPE SLEEVE.
8	LOCK POST IN PLACE WITH IRWD APPROVED SOLID BRASS PAD LOCK.

- NOTES:**
1. PAINT GUARD POST AND CAP OSHA SAFETY YELLOW PER IRWD STD. SPEC. SECTION 09900.
 2. TROWEL CONCRETE POST ANCHOR SURFACE TO DRAIN AWAY FROM STEEL SLEEVE. SHAPE THE U-BOLT SWALE TO MINIMIZE THE PROTRUSION ABOVE THE ADJACENT CONCRETE SURFACE TO ELIMINATE THE TRIPPING HAZARD.

REMOVABLE GUARD POST

IRVINE RANCH WATER DISTRICT, ENGINEERING DEPARTMENT
 APPROVED BY:

 KEVIN L. BURTON R.M.E. M28832
 EXECUTIVE DIRECTOR, ENGINEERING AND WATER QUALITY

JANUARY 2015
 REVISION



**IRWD
 STD. DWG.
 G-1**
 SHEET 1 OF 1