
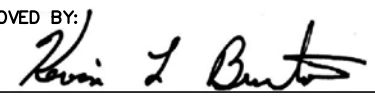
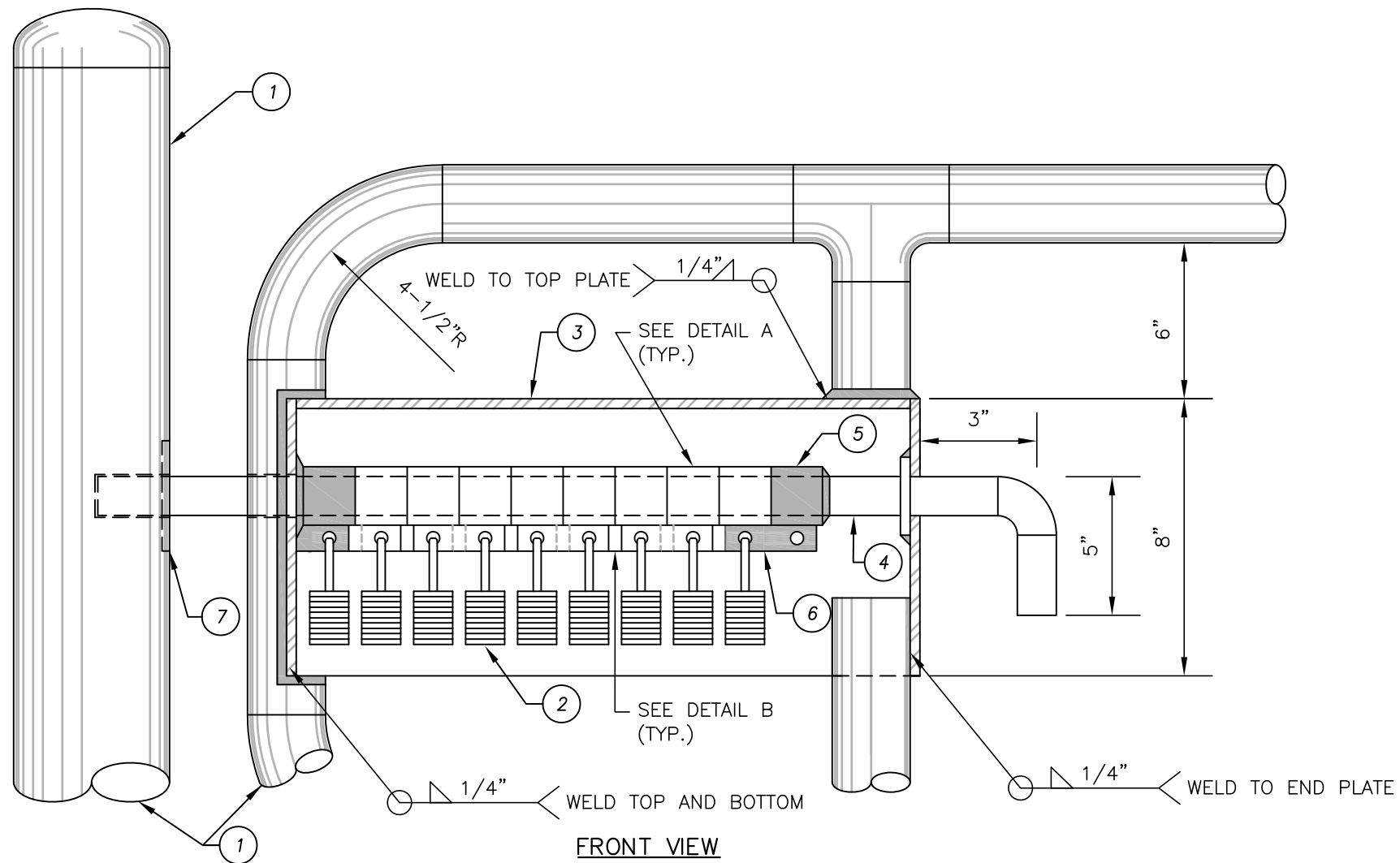


ITEM	MATERIALS
①	6" STD. STEEL HOT DIP GALVANIZED PIPE.
②	2" STD. STEEL HOT DIP GALVANIZED PIPE.
③	2" X 2" X 2" TEE, STD. STEEL HOT DIP GALVANIZED.
④	2" 90° ELBOW, STD. STEEL HOT DIP GALVANIZED.
⑤	6" CLASS 150, STEEL BLIND FLANGE CUT TO FIT. NOT DRILLED FOR BOLTS.

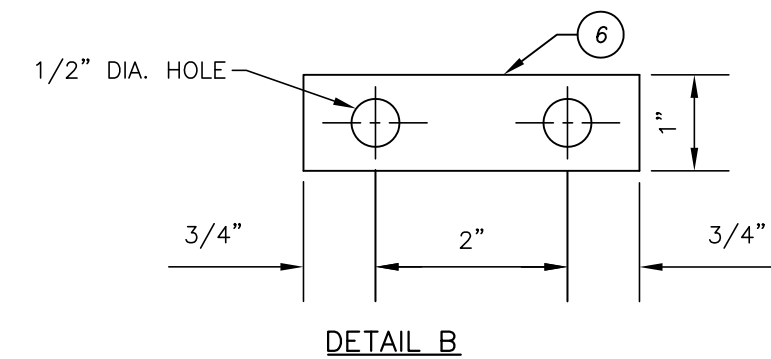
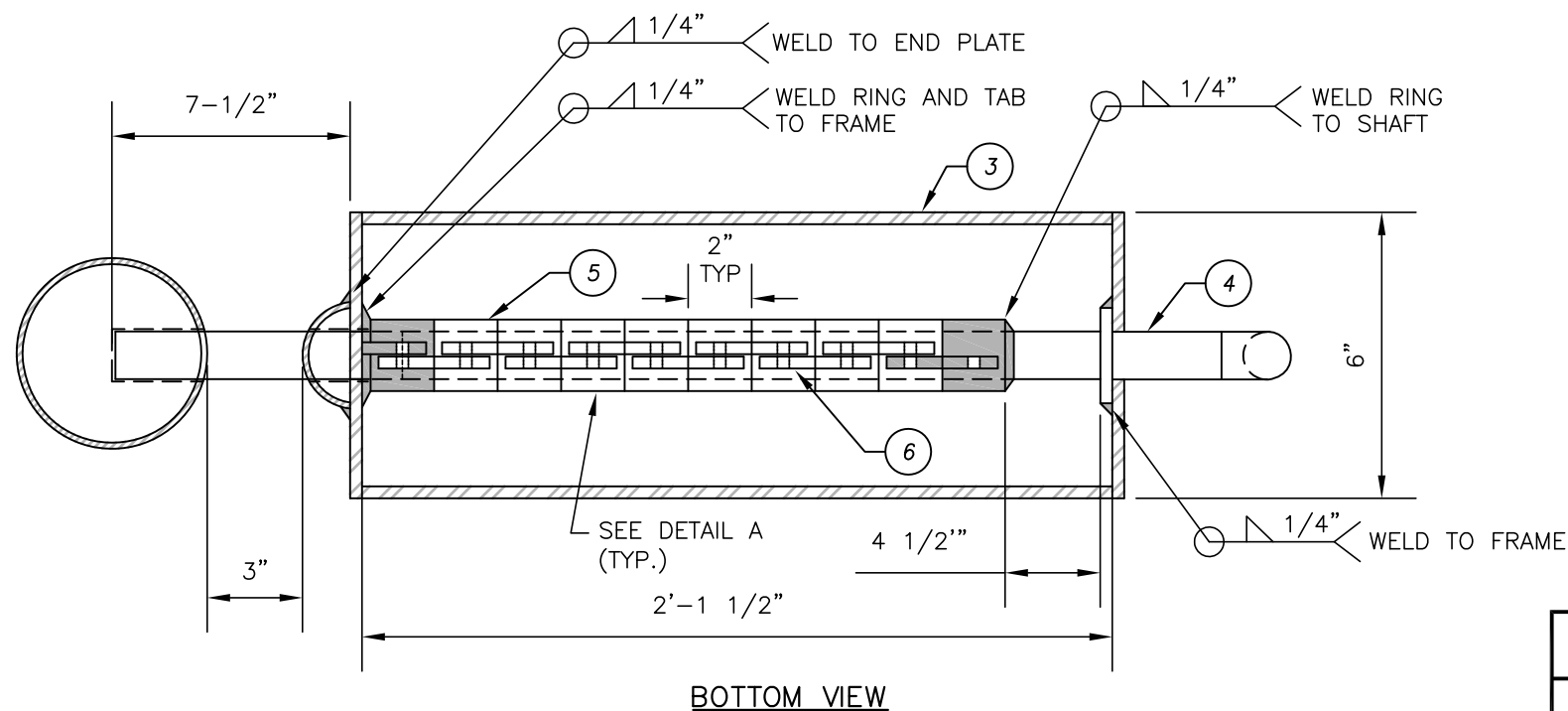
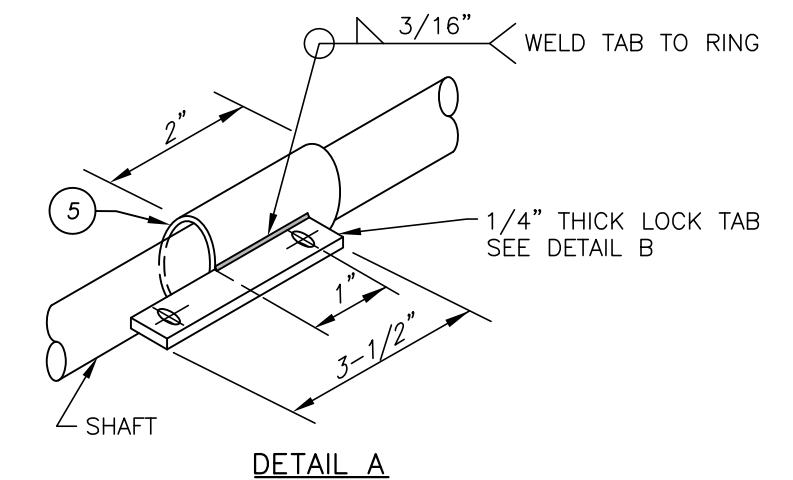
NOTES:

- COAT OR HOT DIP GALVANIZE PER IRWD STD. SPEC. SECTION 09900.
- SET GATE TOP BAR LEVEL. SET POST SO THAT ELEVATION OF POST TOPS ARE EQUAL.
- INCREASE DIMENSION TO SPAN ROAD WIDTH (UP TO MAX. TOTAL SPAN OF 17').

ACCESS GATE			IRWD STD. DWG. G-3
IRVINE RANCH WATER DISTRICT, ENGINEERING DEPARTMENT APPROVED BY:  KEVIN L. BURTON R.M.E. M28832 EXECUTIVE DIRECTOR, ENGINEERING AND WATER QUALITY			



- | ITEM | MATERIALS |
|------|---|
| 1 | GATE FRAME. SEE SHEET 1 OF 2. |
| 2 | NO. 5 SOLID BRASS PADLOCKS AS APPROVED BY IRWD. |
| 3 | 1/4" THICK PLATE METAL BOX COVERING LOCKS. ACCESS TO LOCKS FROM BOTTOM ONLY. |
| 4 | 1-1/2" DIA. STD. STEEL PIPE. LOCK ASSEMBLY SHAFT. |
| 5 | 2" STD. STEEL PIPE COUPLING. 2" LONG AS SHAFT RING COUPLING. WELD THE TWO RINGS AT THE END TO THE PIPE SHAFT AND THE METAL BOX, RESPECTIVELY, AS SHOWN. |
| 6 | 1/4" STEEL PLATE, 3-1/2" LONG BY 1" WIDE AS A LOCK TAB. WELD TO SHAFT RINGS AS SHOWN. |
| 7 | 4" VERTICAL SLOT. |



NOTE:

COAT OR HOT DIP GALVANIZE PER IRWD STD. SPEC. SECTION 09900.

MULTI LOCK GATE ASSEMBLY

IRVINE RANCH WATER DISTRICT, ENGINEERING DEPARTMENT

APPROVED BY:

Kevin L. Burton

KEVIN L. BURTON R.M.E. M28832
EXECUTIVE DIRECTOR, ENGINEERING AND WATER QUALITY

JANUARY 2014
REVISION



**IRWD
STD. DWG.
G-3**

SHEET 2 OF 2