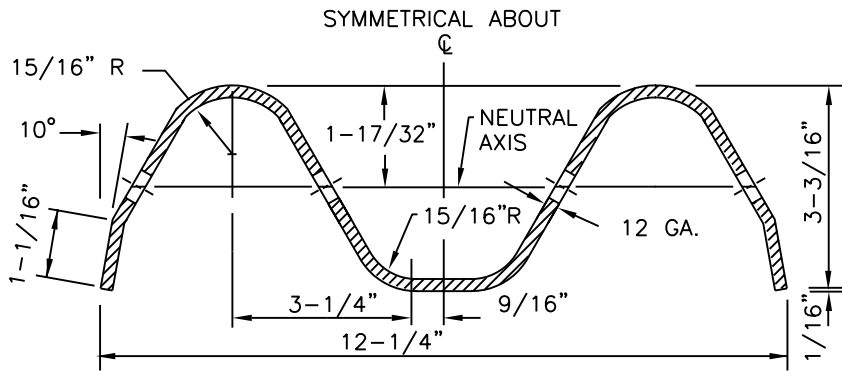


INSTALLATION

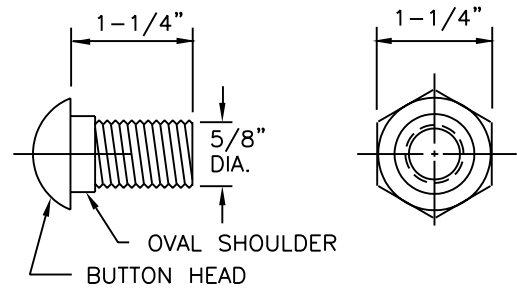
NOTES:

1. GUARD RAILING FLARES AT BRIDGE APPROACHES SHALL HAVE A MINIMUM RADIUS OF 150'.
2. ALL DIMENSIONS ARE SUBJECT TO MANUFACTURING TOLERANCES.
3. ALL WOOD TO BE PRESSURE TREATED IN ACCORDANCE WITH STATE SPECS.



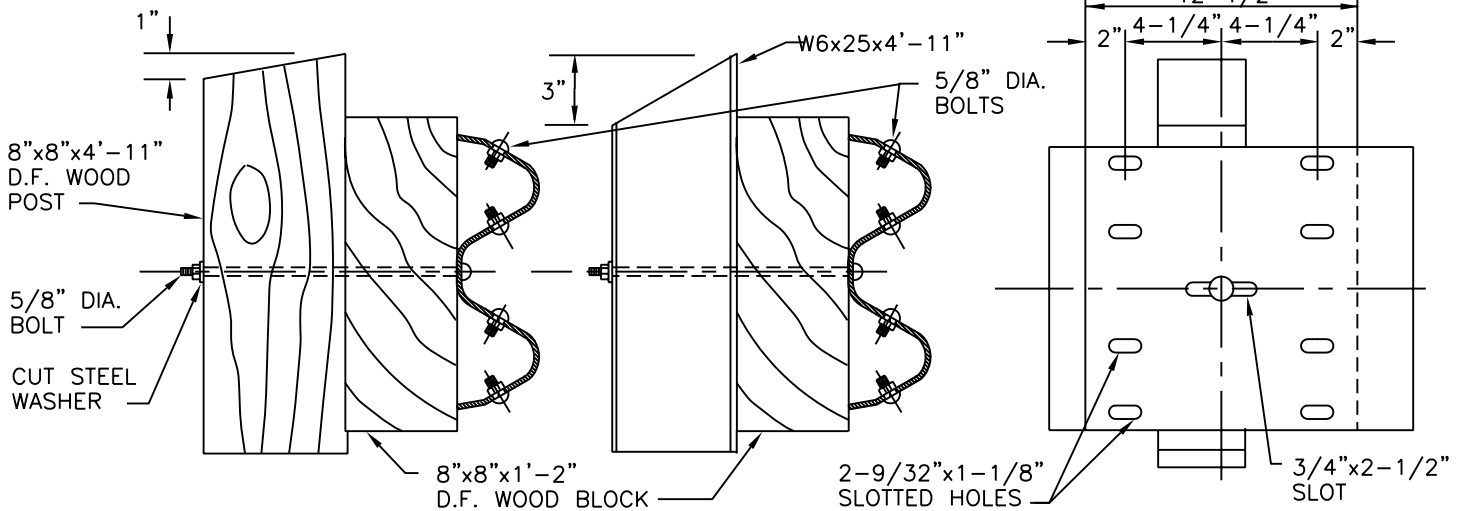
SECTION THROUGH RAIL ELEMENT

TERMINAL SECTION



SPLICE BOLT & NUT

POST BOLT: SIMILAR EXCEPT LENGTH



ARRANGEMENT AT POSTS

RAIL SPLICE

REVISIONS

CITY OF IRVINE

STANDARD PLAN No.

METAL BEAM GUARD RAILING

401

Approved by: Mark L. Carroll R.C.E. 31515
City Engineer

Date: 6-2-92

Sheet 1 of 1