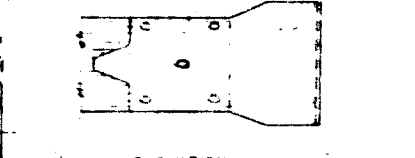
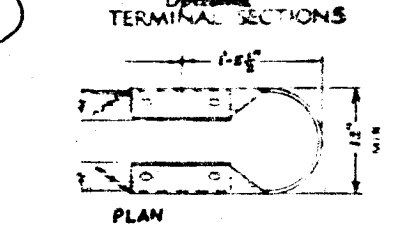
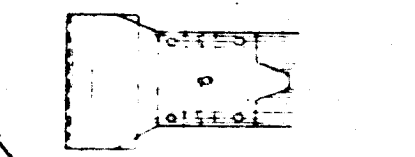
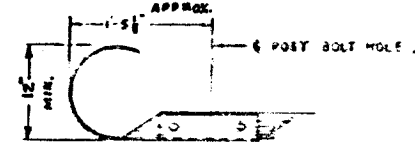
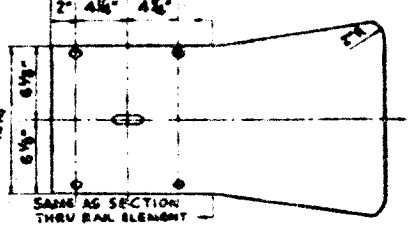
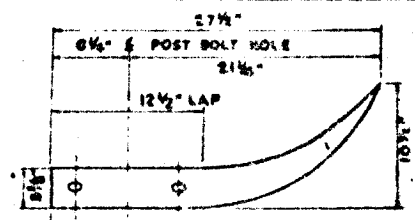
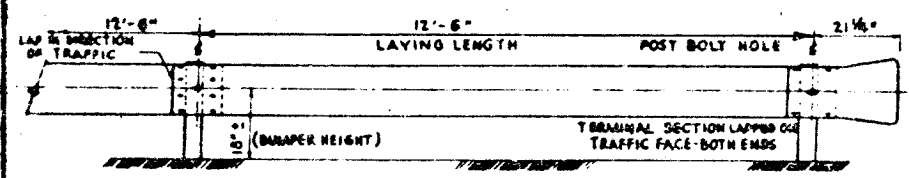


SECTION THRU RAIL ELEMENT

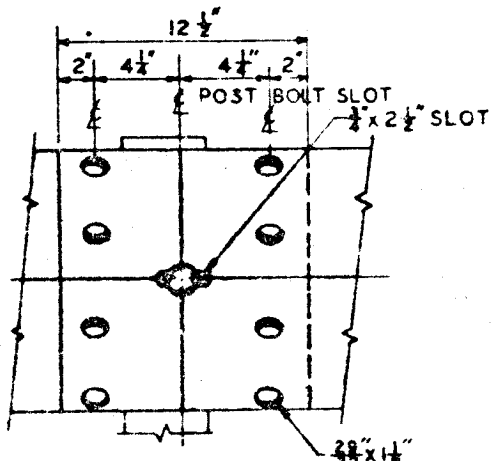


ELEVATION
BACK-TO-BACK ARRANGEMENT
FOR MEDIAN STRIPS
& PARKING LOTS

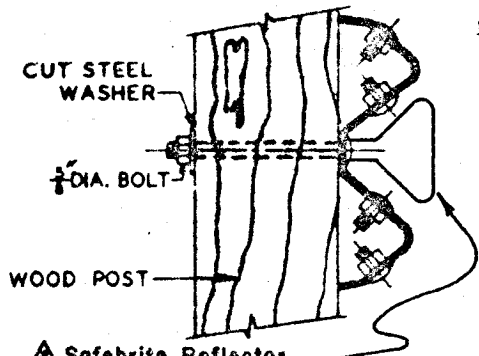
SAFEBRITE REFLECTOR DISTRIBUTOR: ANDERSON GUARD RAIL CORP
2601 N. DORT HWY
FLINT, MICH. 4850



INSTALLATION

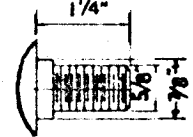


RAIL SPLICE

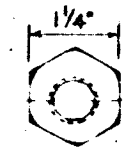
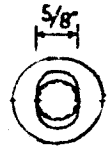


ARRANGEMENT AT POSTS

SLOTTED HOLES



SPLICE BOLT
8 REQ'D PER SPLICE



NUT
9 REQ'D PER RAIL ELEMENT

- DIMENSIONS AND MECHANICAL PROPERTIES**
- Min. Gauge — 12
 - Min. x-section area — 1.99 sq. in.
 - Min. Moment of Inertia (Horiz.) — 2.30 in.⁴
 - Min. Moment of Inertia (Vert.) — 30 in.⁴
 - Min. Section Modulus — 1.37 in.³
 - Min. Wt. per Ft. — 6.80 lbs.

NOTES:

SPECIFICATIONS shall equal or exceed those of Armco, Bethlehem, and/or American (U.S.S.).
POSTS shall be 6" x 8" timber, (6" x 6" for parking lots), 6' long (5' in lots), set approximately 4' below ground line (3' in lots). Posts to be painted same color as rails. Posts to be treated Douglas Fir.
FINISH—All metal parts, including rails, terminal sections, bolts, washers, nuts, etc., shall be galvanized.

Upon completion of installation, guard rail and posts shall be given two coats of white paint conforming to Div. of Hwys. Spec 52-G-10 (Sec. 32, Chap II, Par. J, Div of Hwys Std Specs) over one prime coat of zinc chromate primer.

PARKING METERS, when required, shall be located approximately 3" behind guard rails and along center line of back-to-back installations.

TERMINAL SECTIONS in parking lots shall be the wrap-around type. Highway installations may be either type unless otherwise noted.

▲ GUARD RAIL POSTS in parking lots shall be set by cutting and/or digging post holes (after completion of any paving, if required), setting posts, and backfilling to grade with concrete, sloped to drain away from post.

Approved: *[Signature]*
Date: 10-14-58 Traffic Engineer

H. Ball

**STEEL GUARD RAIL
(BEAM TYPE)**

CITY OF RIVERSIDE, CALIFORNIA
TRAFFIC AND PARKING DIV., DEPT. OF PUBLIC WORKS

STANDARD DRAWING NO. 650

REVISIONS			
DATE	MARK	BY	APPROVED
6-15-59		H. BALL	
2-3-60	▲	H. BALL	Revised to apply to STEEL guard rail only.
6-23-70	▲	E. J.	POST INSTALLATION.