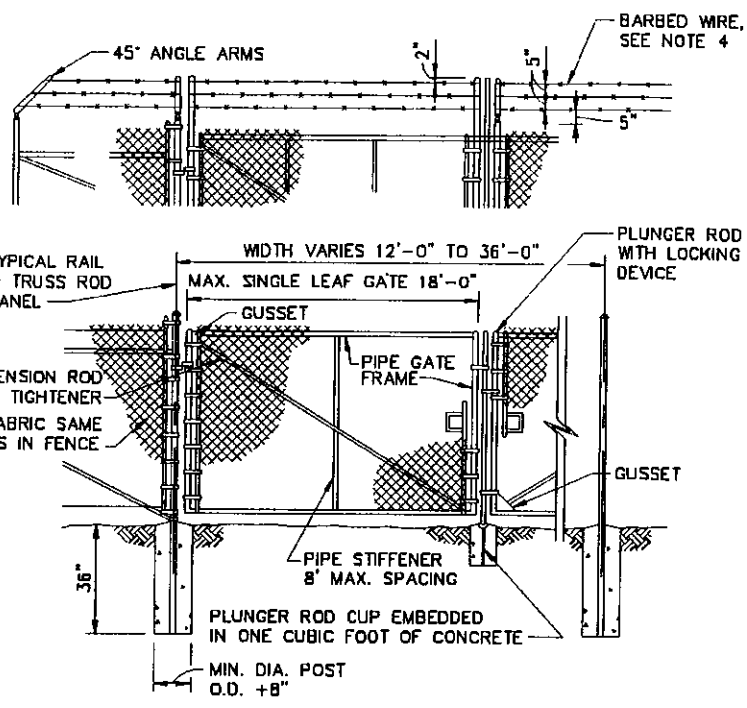
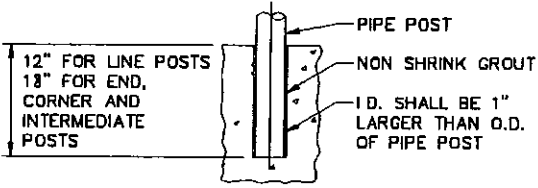


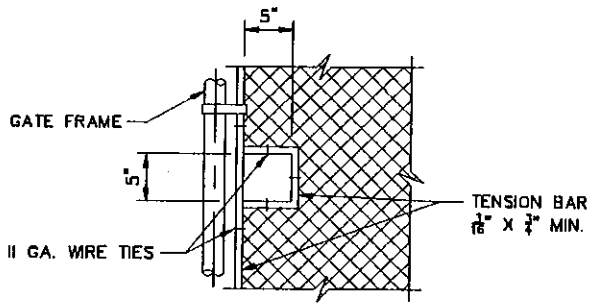
**TYPICAL WALK GATE**



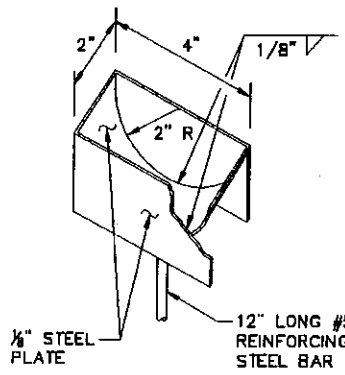
**TYPICAL DRIVE GATE**



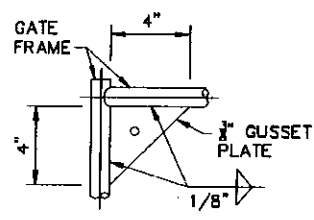
**POST EMBEDMENT DETAIL  
IN CONCRETE HEADWALLS,  
RETAINING WALLS,  
CHANNEL WALLS, ETC.**



**DETAIL OF CUT-OUT  
FOR CHAIN AND LOCK**



**PLUNGER ROD CUP DETAIL**



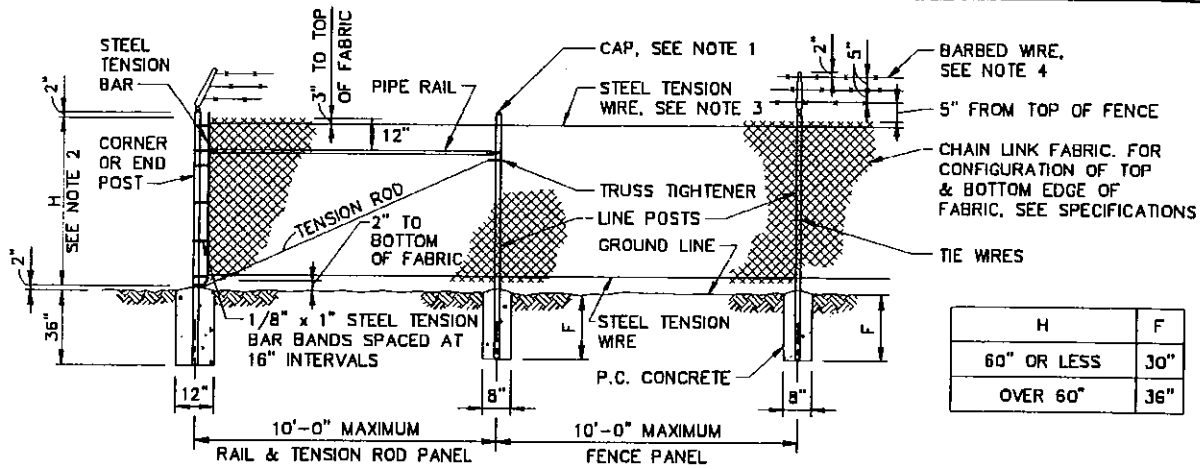
**GUSSET DETAIL**

**NOTES:**

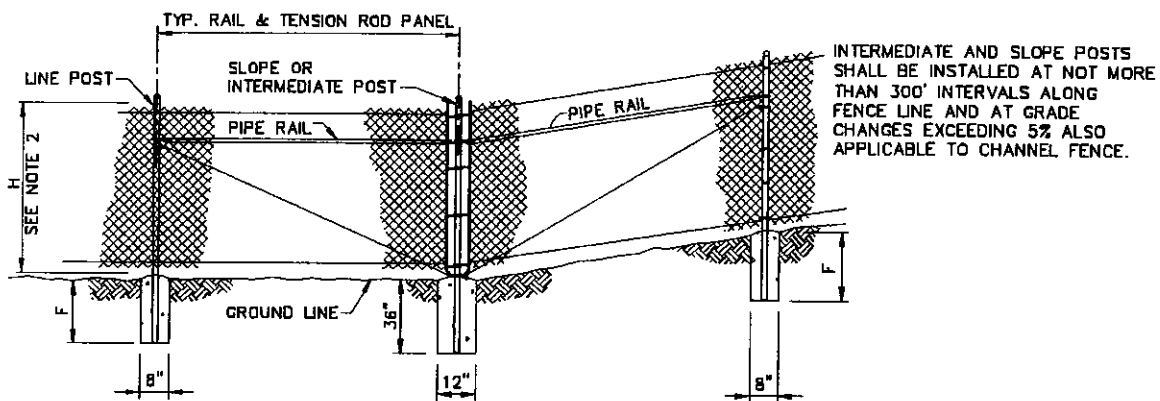
1. SECURE DRIVE FIT GALVANIZED CAP TO POST WITH 1/4" ROUND HEAD RIVET.
2. H DENOTES FABRIC WIDTH AND NOMINAL FENCE HEIGHT H SHALL BE 5'-0" UNLESS OTHERWISE SPECIFIED.
3. IF CHAIN LINK FENCE WITH TOP RAIL IS SPECIFIED, DELETE STEEL TENSION WIRE AT THE TOP AND THE PIPE RAILS AT INTERMEDIATE END AND CORNER POSTS. EXTEND TENSION ROD TO THE TOP RAIL.
4. BARBED WIRE SHALL BE USED ONLY WHEN SPECIFIED.
5. ALL DATA SHOWN ON TYPICAL DETAILS SHALL BE APPLICABLE TO OTHER PERTINENT DETAILS.

**THE PORT OF LONG BEACH ENGINEERING DIVISION**

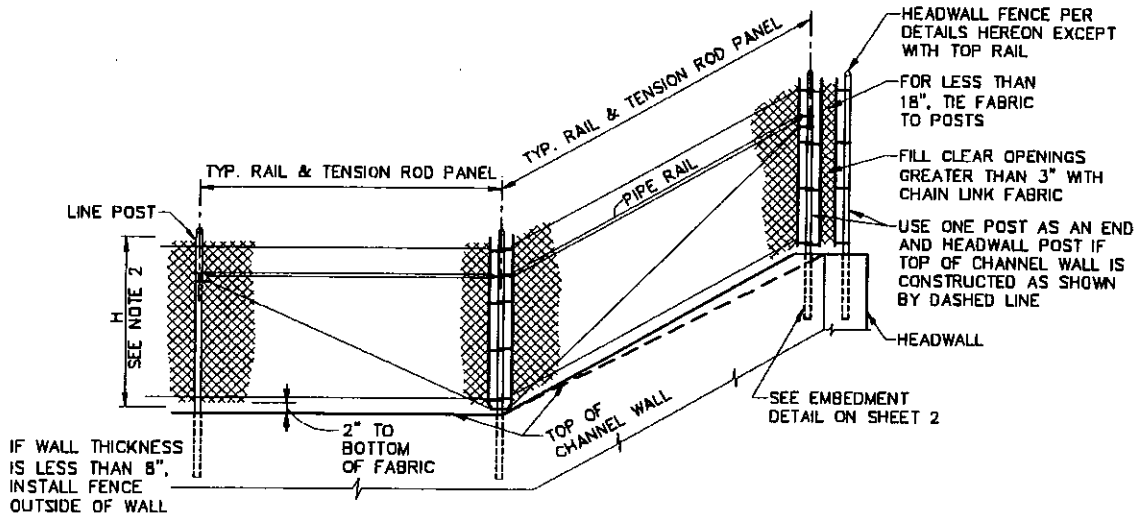
REVISIONS		STANDARD PLAN
NO.	DATE	
1		CHAIN LINK FENCE AND GATES
2		
3		
APPROVED BY: _____		R.E. NO.: _____
CHIEF HARBOR ENGINEER		DATE: _____
		ST-19
		2 OF 2



**TYPICAL FENCE ELEVATION**



**INTERMEDIATE POST DETAIL**



**CHANNEL WALL AND WINGWALL DETAIL AT HEADWALL**

**THE PORT OF LONG BEACH** ENGINEERING DIVISION

**CHAIN LINK FENCE AND GATES**

STANDARD PLAN

ST-19

REVISIONS	
NO.	DATE
1	
2	
3	

APPROVED BY: \_\_\_\_\_ CHIEF HARBOR ENGINEER \_\_\_\_\_ R.E. NO.: \_\_\_\_\_ DATE: \_\_\_\_\_

1 OF 2