

LEGEND:

- 1 2" STANDARD WEIGHT TUBE (OUTSIDE DIA. - 2.375" - INSIDE DIA. - 2.067")
- 2 4" STANDARD WEIGHT TUBE (OUTSIDE DIA. - 4.5 - INSIDE DIA. - 4.026")
- 3 5" STANDARD WEIGHT TUBE (OUTSIDE DIA. - 5.563", INSIDE DIA. - 5.047")
- 4 6" EXTRA STRENGTH TUBE (OUTSIDE DIA. - 6.625", INSIDE DIA. - 5.761")
- 5 6" MINIMUM 2500 PSICONCRETE BACKFILL
- 6 NO TRESPASSING SIGN PER METROLINK ENGINEERING STANDARD ES5224. (BOTH SIDES)
- 7 MODIFIED TYPE "OM1-3" (AS PER MUTCD) WARNING SIGN TO READ: "KEEP GATE LOCKED". (BOTH SIDES)

NOTES:

1. EXISTING ELEMENTS OF RIGHT-OF-WAY SECURITY WILL BE INTEGRATED INTO THE LAYOUT TO OBTAIN EFFECTIVE DETERRENCE WITH MINIMUM OF NEW CONSTRUCTION. BUILDINGS, WALLS, DITCHES, UTILITY POLES, FENCES, SIGNS WITH POSTS (AT LEAST SIX INCHES IN WIDTH), MONUMENTS, ABUTMENTS OR PERMANENT LANDSCAPING MORE THAN THREE FEET TALL ARE ALL ACCEPTABLE DETERRENCE. IF FENCE, WALL OR BUILDING IS WITHIN 12 FEET OF THE CENTERLINE OF TRACK, NO BARRIER IS REQUIRED.
2. SECURITY GATE TYPICAL LAYOUT PLAN ILLUSTRATES FOUR SITUATIONS, ONE IN EACH QUADRANT THAT CAN BE USED TO DENY ACCESS. SCRRR AUTHORIZED PERSONS MAY RECOMMEND OTHER ELEMENTS OF VEHICLE CONTROL TO FIT CONDITIONS.
3. SECURITY GATES WILL BE PLACED AT LEAST 25 FEET FROM THE ROADWAY TO ALLOW AUTHORIZED VEHICLES TO STOP CLEAR OF TRAFFIC TO OPEN/ CLOSE LOCKED GATES. THE TRACK SIDE OF THE PARKING AREA IS TO BE CLOSED OFF WITH BOLLARDS, K-RAIL, OR OTHER BARRIERS.
4. INSTALLATION OF BOLLARDS OR GATE POSTS MAY BE ADJUSTED TO AVOID CONFLICT WITH SCRRR SIGNAL OR OTHER UNDERGROUND UTILITIES. LOCATIONS OF UNDERGROUND UTILITIES MUST BE CLEARLY ESTABLISHED PRIOR TO ANY EXCAVATION.
5. BOLLARDS WILL BE SPACED 48" TO 66" ON CENTER AND EACH RUN OR LOCATION WILL BE UNIFORM. BOLLARDS AND K-RAIL WILL NOT IMPEAD PEDESTRIAN OR SIDEWALK TRAFFIC.
6. SECURITY GATE AND POSTS WILL BE PAINTED PROTECT RUST PREVENT ENAMEL GLOSS SAFETY YELLOW, SKU NO. 01-0597101.
7. APPROPRIATE REGIONAL NOTIFICATION CENTER (UNDERGROUND SERVICE ALERT (DIGALERT) AT (800) 227-2600), RAILWAY COMPANIES, AND UTILITY COMPANIES WILL BE NOTIFIED PRIOR TO PERFORMING ANY EXCAVATION CLOSE TO ANY UNDERGROUND PIPELINE, CONDUIT, DUCT, WIRE, OR OTHER STRUCTURE. SCRRR IS NOT A MEMBER OF DIGALERT, IT IS, THEREFORE, NECESSARY TO CALL SCRRR SIGNAL DEPARTMENT AT (909) 392-8476 TO MARK SIGNAL AND COMMUNICATION CABLES AND CONDUITS.
8. INSTALLATION OF ELEMENTS MUST NOT BLOCK DRAINAGE FROM TRACK OR ALONG THE TRACK, THE "OVERHANGING" BOLLARD WILL BE USED TO SPAN DRAINAGE OR UNDERGROUND UTILITIES AND STILL MAINTAIN A GAP BETWEEN BOLLARDS OF NOT MORE THAN 66 INCHES. LOCAL GRADING OR OTHER WORK IS NEEDED TO DRAIN THE SECURED AREA, IT WILL BE CARRIED OUT AS PART OF THE INSTALLATION.
9. STOP BOLT WILL BE 1" IN DIAMETER BY 7" LONG. BOTH ENDS OF THE BOLT WILL BE WELDED TO HINGE POST THEN CUT AND GRIND THREADED END FLUSH TO HINGE POST SO AS NOT TO IMPEDE ROTATION OF LOWER HINGE RING.

LEGEND: (CONT.)

- 8 STOP BOLT.
- 9 GRADE 70 HIGH TENSILE STEEL 3/4", APPROXIMATELY 2 FT. LONG CHAIN.
- 10 S & G OR EQUAL ENVIRONMENTAL PADLOCK

PRE-FINAL SUBMITTAL

REV.	DATE	DESCRIPTION	DES.	ENG.
2	7/06/07	REVISED GATE LOCATION PLAN AND NOTES	AC	NDP
1	7/11/06	REVISED LEGEND ITEMS 1, 2 AND 7	AC	NDP

DRAWN BY: A. CARLOS DATE: 07/18/05
 APPROVED BY: *Nancy J. Papp*
 MANAGER: CIVIL ENGINEERING
Danell V. Maxey
 DIRECTOR OF ENGINEERING AND CONSTRUCTION

THE SOUTHERN CALIFORNIA REGIONAL RAIL AUTHORITY OR ITS OFFICERS OR AGENTS SHALL NOT BE RESPONSIBLE FOR THE ACCURACY OR COMPLETENESS OF THIS PLAN SHEET

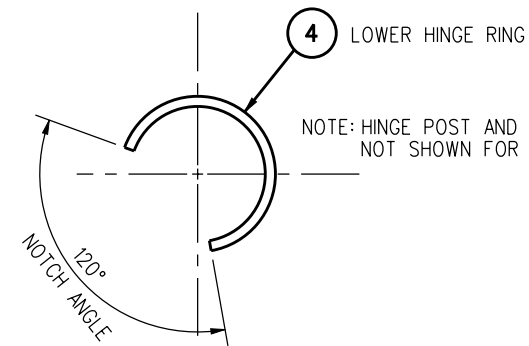


ENGINEERING STANDARDS
 R.O.W. SECURITY ACCESS GATE DETAILS

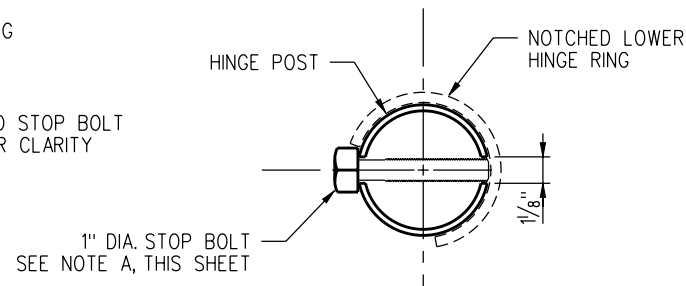
STANDARD	5107
SCALE:	AS NOTED
REVISION SHEET	2 1 OF 2
CADD FILE:	ES5107-01

NOTE:

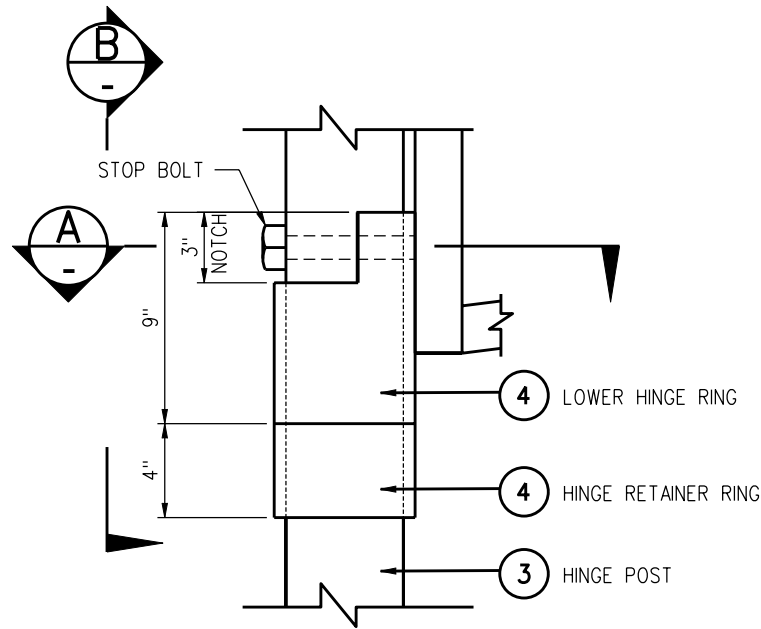
1. FOR NOTES AND LEGEND SEE ES5107-01.
2. TO BE DETERMINED IN FIELD BY SCRRA.



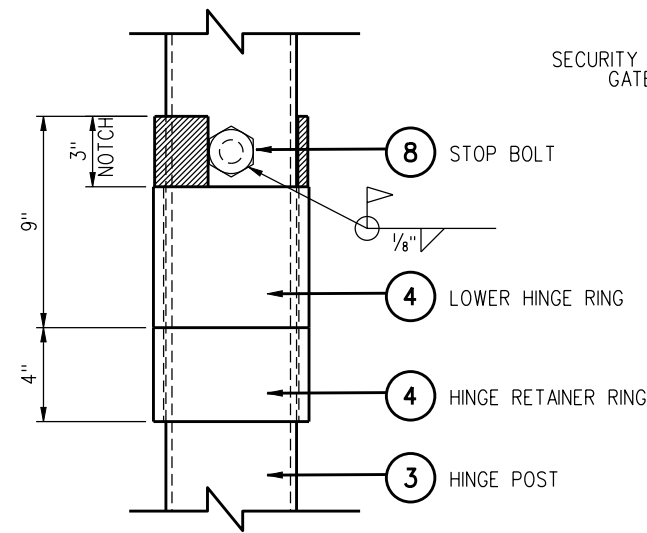
SECTION A
SCALE: 3" = 1'-0"



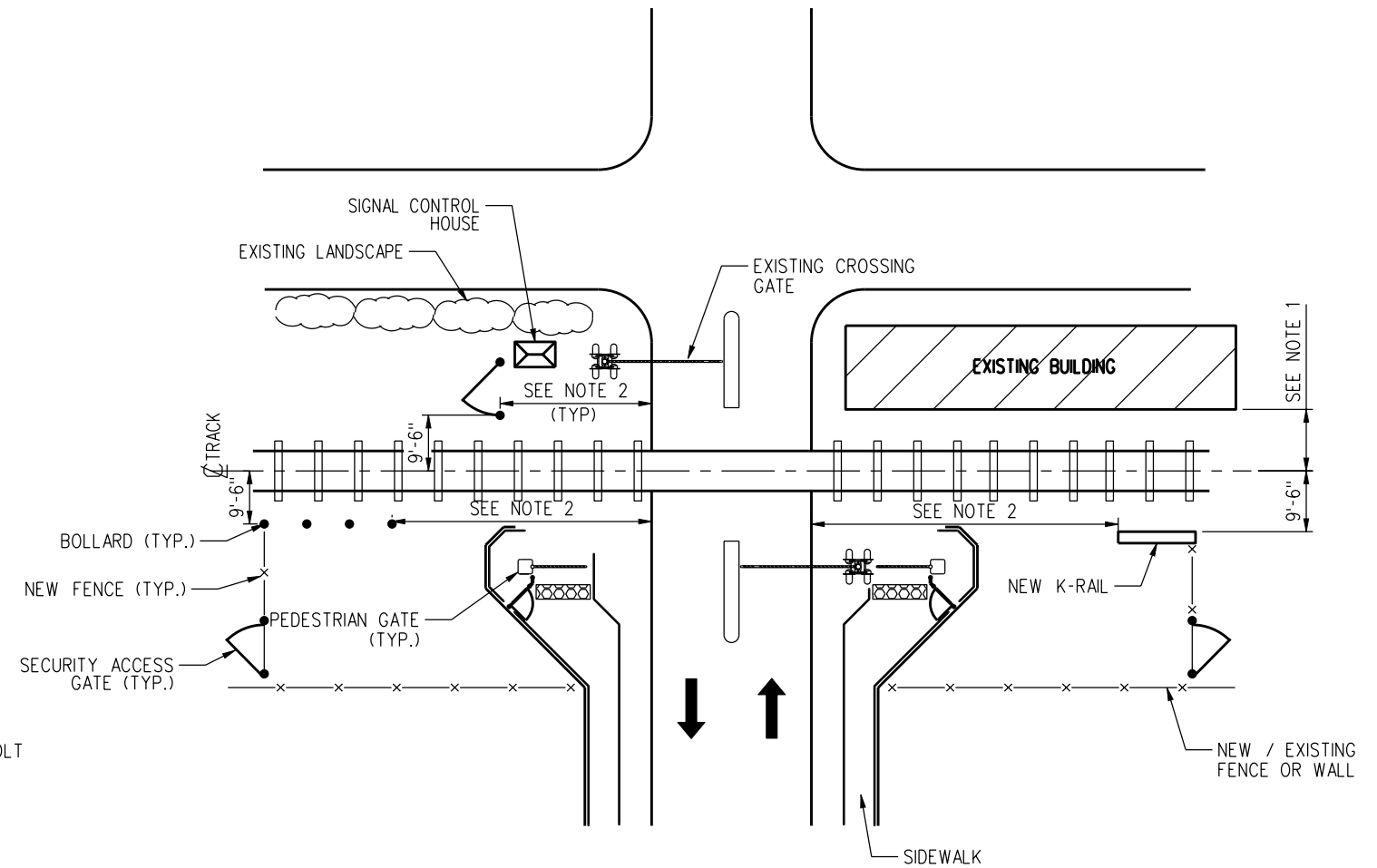
SECTION A
SCALE: 3" = 1'-0"



DETAIL 3
SCALE: 3" = 1'-0"



VIEW B
SCALE: 3" = 1'-0"



TYPICAL SECURITY GATE LAYOUT PLAN
SCALE: NONE

PRE-FINAL SUBMITTAL

REV.	DATE	DESCRIPTION	DES.	ENG.
1	7/06/07	REVISED SECTION A, VIEW B & ADDED TYPICAL LAYOUT	AC	NDP

DRAWN BY: A. CARLOS DATE: 07/18/05
 APPROVED BY: *Nancy D. Poff*
 MANAGER: CIVIL ENGINEERING
 APPROVED BY: *Danell V. Maxey*
 DIRECTOR OF ENGINEERING AND CONSTRUCTION

THE SOUTHERN CALIFORNIA REGIONAL RAIL AUTHORITY OR ITS OFFICERS OR AGENTS SHALL NOT BE RESPONSIBLE FOR THE ACCURACY OR COMPLETENESS OF THIS PLAN SHEET



METROLINK
 SOUTHERN CALIFORNIA REGIONAL RAIL AUTHORITY
 700 SOUTH FLOWER STREET, 26TH FLOOR
 LOS ANGELES, CALIFORNIA 90017

ENGINEERING STANDARDS
 R.O.W. SECURITY ACCESS GATE DETAILS

STANDARD	5107
SCALE:	AS NOTED
REVISION SHEET	1 2 OF 2
CADD FILE:	ES5107-02