
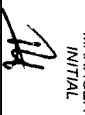


OBTAIN APPLICATION FOR KNOX BOX #3263 WELD TO 3/16" BACKING PLATE ON POST

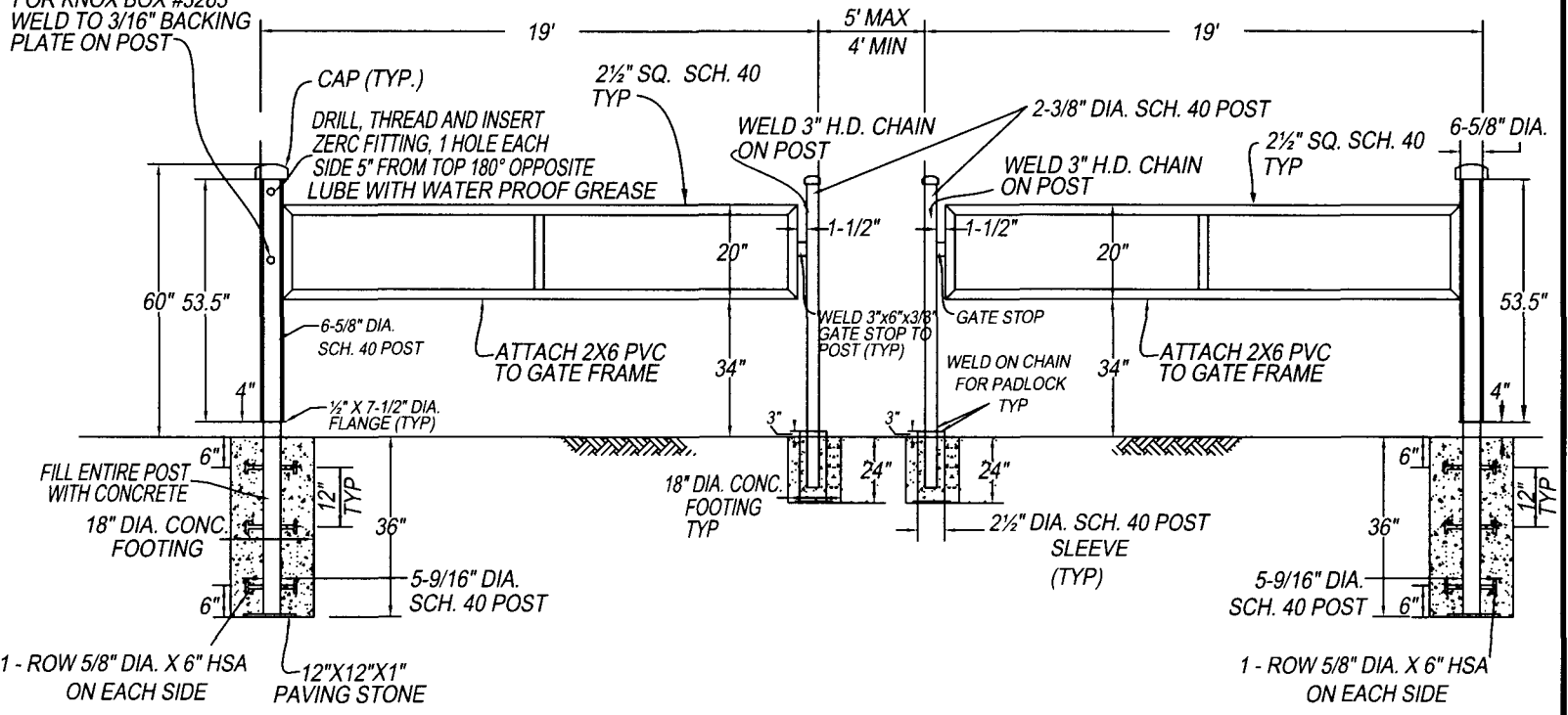
SINGLE TRAIL ACCESS GATE

- NOTES:**
- 1.) ALL METAL IS TO BE HOT DIP GALVANIZED.
 - 2.) PROVIDE STOPS ON HINGE POST SO GATE DOES NOT SWING OUTWARD INTO TRAFFIC.
 - 3.) TWO (2) ADDITIONAL POSTS TO BE LOCATED IN FIELD FOR HOLD OPEN POSITION.

1 - ROW 5/8" DIA. X 6" HSA ON EACH SIDE

APPROVED BY  PUBLIC WORKS DIRECTOR/ CITY ENGINEER	PARKS & RECREATION
	DATE 2/07
 DIVISION MANAGER INITIAL	CITY OF MORENO VALLEY PREPARED BY CAPITAL PROJECTS
	SINGLE TRAIL ACCESS GATE NO. 218B 2 of 10

OBTAIN APPLICATION FOR KNOX BOX #3263 WELD TO 3/16" BACKING PLATE ON POST



DOUBLE TRAIL ACCESS GATE WITH CENTER ACCESS

- NOTES:**
- 1.) ALL METAL IS TO BE HOT DIP GALVANIZED.
 - 2.) PROVIDE STOPS ON HINGE POST SO GATE DOES NOT SWING OUTWARD INTO TRAFFIC.
 - 3.) TWO (2) ADDITIONAL POSTS TO BE LOCATED IN FIELD FOR HOLD OPEN POSITION.

PARKS & RECREATION
DATE 2/07

APPROVED BY
PUBLIC WORKS DIRECTOR/CITY ENGINEER

DIVISION MANAGER INITIAL

CITY OF MORENO VALLEY
PREPARED BY CAPITAL PROJECTS

DOUBLE TRAIL ACCESS GATE WITH CENTER OPENING

218D
NO. 4 of 10