

STANDARD PLANS FOR PUBLIC WORKS CONSTRUCTION

PROMULGATED BY THE
PUBLIC WORKS STANDARDS INC.
GREENBOOK COMMITTEE
1993
REV. 1996, 2005, 2009

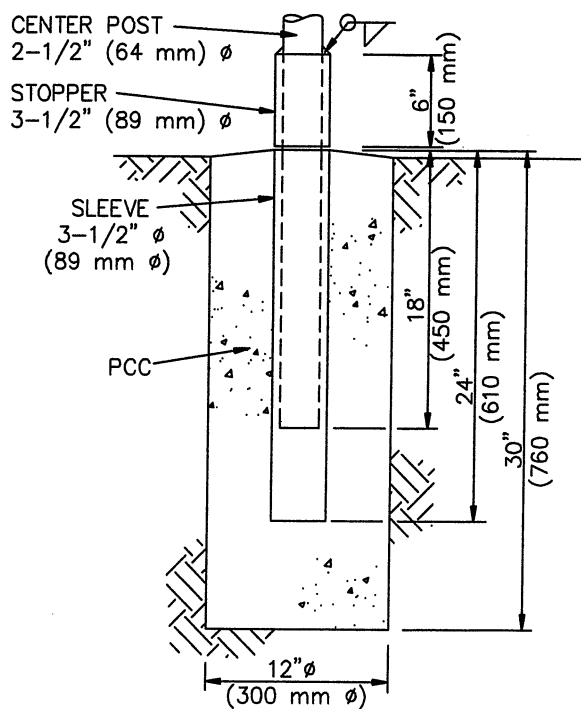
**STANDARD PIPE GATE
FOR ACCESS ROADS**

STANDARD PLAN
602-3
SHEET 1 OF 2

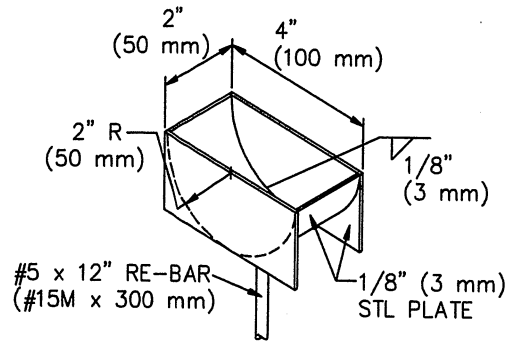
USE WITH STANDARD SPECIFICATIONS FOR PUBLIC WORKS CONSTRUCTION

NOTES:

1. FOR ROADWAYS 16'-0" (4.8 m) WIDE OR LESS, USE A SINGLE GATE. PLACE THE ANGLE CATCH ON A PERMANENT END POST.
2. PIPE SHALL BE STANDARD WEIGHT, PER AISC STANDARDS.
3. CUT THE PIPE TO PROVIDE A CLOSE FIT-UP OF THE JOINTS.
4. USE 100% PENETRATION WELDS FOR PIPE CONNECTIONS.
5. PAINT GATE WITH ONE COAT OF ALUMINUM PAINT AFTER FABRICATION.
6. GATE HINGES SHALL BE HEAVY DUTY, MALLEABLE IRON OR STEEL, INDUSTRIAL SERVICE TYPE, WITH 270° SWING.
7. TYPE K AND TYPE L MARKERS SHALL CONFORM TO STATE OF CALIFORNIA DEPARTMENT OF TRANSPORTATION ("CALTRANS") STANDARDS. THE REFLECTORS SHALL BE FILM-TYPE.
8. SECURE NUTS AT U BOLT ENDS FROM REMOVAL BY WELDING OR PEENING AFTER INSTALLING MARKERS.



DETAIL D



**PLUNGER CUP
ISOMETRIC**

STANDARD PLANS FOR PUBLIC WORKS CONSTRUCTION

**STANDARD PIPE GATE
FOR ACCESS ROADS**

STANDARD PLAN

602-3

SHEET 2 OF 2