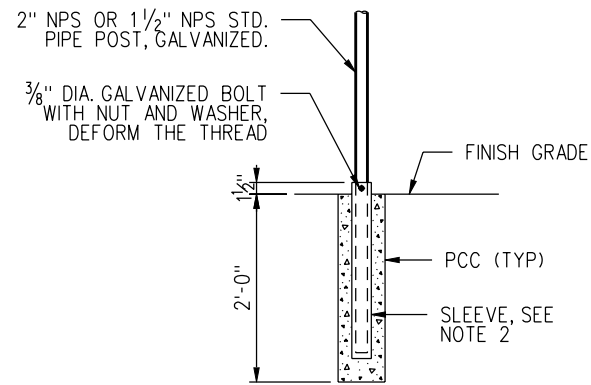


TYPE 1

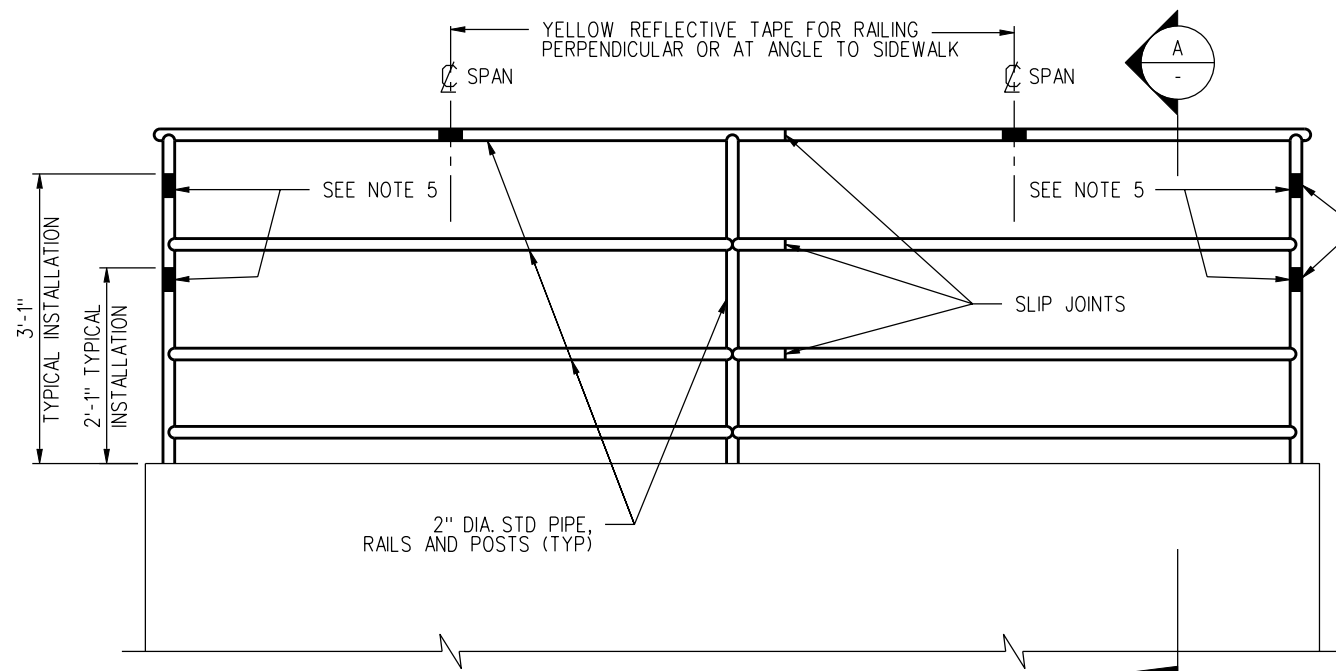


SLEEVE POST DETAIL

NOTES:

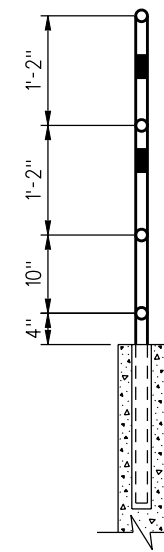
1. PEDESTRIAN BARRICADE SHALL BE AS PER CALTRANS PLAN ES-7P AND AS MODIFIED HEREWITH.
2. PIPE POST TO BE SET 1'-6" BACK FROM FACE OF CURB UNLESS OTHERWISE SPECIFIED.
3. STEEL SLEEVE TO BE CONSTRUCTED WITH A DIAMETER OF 1/16" LARGER THAN POST. WALL THICKNESS OF SLEEVE TO BE SAME AS POST OR LARGER.
4. CONTRACTOR MAY SUBMIT ALTERNATIVE DETAILS FOR APPROVAL BY SCRRA.
5. FOR MINIMUM PIPE DIAMETERS AND WALL THICKNESS REFER TO ASTM A6M.
6. THE LOCATION OF BARRICADE SHALL BE COORDINATED WITH LOCAL AUTHORITY AND SCRRA.
7. THE "CROSS ONLY AT CROSSWALKS" (R9-2) AND "USE CROSSWALK" (R9-3b) SIGNS AS PER CA MUTCD SHALL BE INSTALLED AT APPROPRIATE LOCATIONS AS NEEDED.

PEDESTRIAN BARRICADE DETAILS



TYPE B

YELLOW REFLECTIVE TAPE WHEN RAILING IS PARALLEL OR AT AN ANGLE TO THE STREET



SECTION A

NOTES:

1. METAL HAND RAILING SHALL BE AS PER APWA STANDARD PLAN 600-2, "TYPE B" AND AS MODIFIED HEREWITH.
2. RAILS, POSTS AND PICKETS SHALL BE GALVANIZED STEEL PIPE.
3. MAXIMUM SPACING OF POSTS SHALL BE 8'-0" ON STRAIGHT ALIGNMENTS, AND 6'-0" ON CURVED ALIGNMENTS WITH LESS THAN 30' RADIUS. MAKE SPACING UNIFORM BETWEEN CHANGES IN ALIGNMENTS.
4. WELDS SHALL BE SLOT OR FILLET WELDS EQUAL TO THICKNESS OF PIPE. WELD ALL JOINTS ALL AROUND.
5. INSTALL HIGH VISIBILITY YELLOW REFLECTIVE TAPE 3" x 3".

METAL HAND RAILING DETAILS

PRE-FINAL SUBMITTAL

REV.	DATE	DESCRIPTION	DES.	ENG.

DRAWN BY: A. CARLOS DATE: 12/12/09
 APPROVED BY: *Nancy J. Papp*
 MANAGER: CIVIL ENGINEERING
Danell V. Maxey
 DIRECTOR OF ENGINEERING AND CONSTRUCTION

THE SOUTHERN CALIFORNIA REGIONAL RAIL AUTHORITY OR ITS OFFICERS OR AGENTS SHALL NOT BE RESPONSIBLE FOR THE ACCURACY OR COMPLETENESS OF THIS PLAN SHEET



METROLINK[®]
 SOUTHERN CALIFORNIA REGIONAL RAIL AUTHORITY
 700 SOUTH FLOWER STREET, 26TH FLOOR
 LOS ANGELES, CALIFORNIA 90017

ENGINEERING STANDARDS

PEDESTRIAN BARRICADE AND METAL HAND RAILING DETAILS

STANDARD	4005
SCALE:	AS NOTED
REVISION SHEET	1 OF 1
CADD FILE:	ES4005