

ELEVATION

STANDARD PLANS FOR PUBLIC WORKS CONSTRUCTION

PROMULGATED BY THE  
PUBLIC WORKS STANDARDS INC.  
GREENBOOK COMMITTEE  
1993  
REV. 1996, 2005, 2009

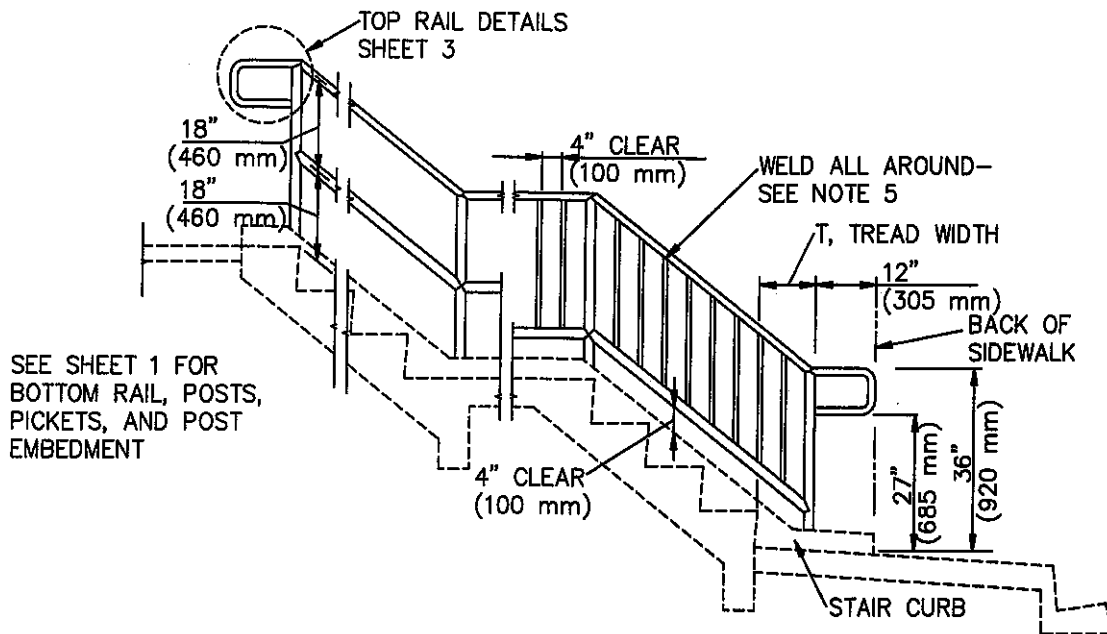
METAL HAND RAILINGS

USE WITH STANDARD SPECIFICATIONS FOR PUBLIC WORKS CONSTRUCTION

STANDARD PLAN

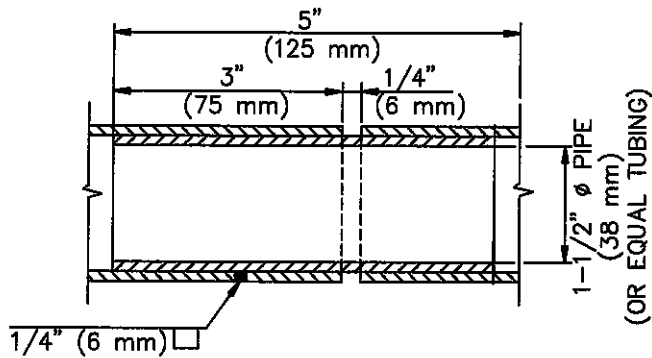
606-3

SHEET 1 OF 3

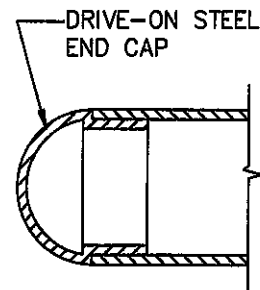


TYPE A                      TYPE C

HANDRAIL INSTALLATION ON STAIRWAYS



SLIP JOINT DETAIL



CAP DETAIL FOR RAIL END

NOTES:

1. USE TYPE C WHERE ADJACENT GRADE IS MORE THAN 2'-6" (760 mm) BELOW LANDING OR SIDEWALK FINISHED SURFACE.
2. RAILS, POSTS, AND PICKETS SHALL BE GALVANIZED STEEL PIPE.
3. PROVIDE SLIP JOINTS AT STAIRWAY EXPANSION JOINTS, 24' (7.3 m) MAXIMUM.
4. MAXIMUM SPACING OF POSTS SHALL BE 8'-0" (2.44 m) ON STRAIGHT ALIGNMENTS, AND 6'-0" (1.83 m) ON CURVED ALIGNMENTS WITH LESS THAN 30' (9.1 m) RADIUS. MAKE SPACING UNIFORM BETWEEN CHANGES IN ALIGNMENT.
5. WELDS SHALL BE SLOT OR FILLET WELDS EQUAL TO THICKNESS OF PIPE. WELD ALL JOINTS ALL AROUND.

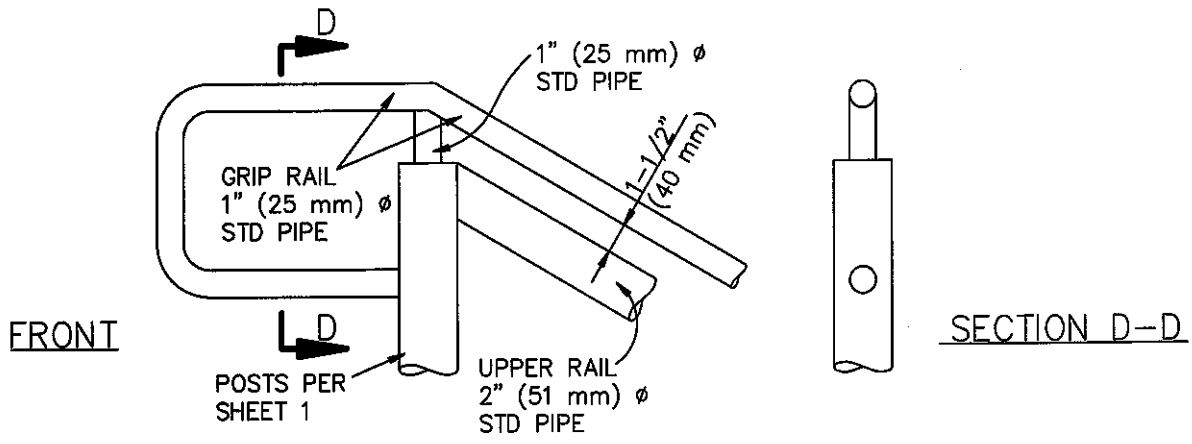
STANDARD PLANS FOR PUBLIC WORKS CONSTRUCTION

**METAL HAND RAILINGS**

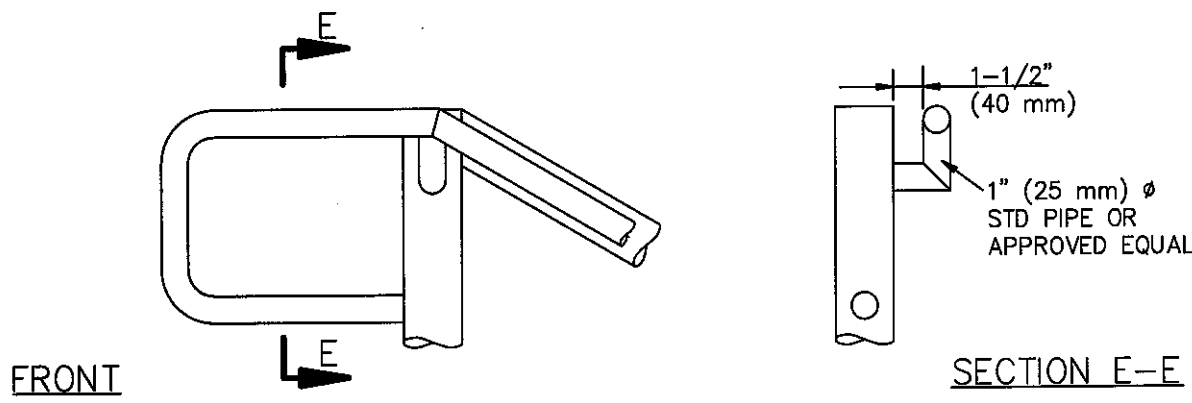
STANDARD PLAN

**606-3**

SHEET 2 OF 3



TOP RAIL TYPE 1



TOP RAIL TYPE 2

