

PARKS & RECREATION

DATE

2/07

DIVISION
MANAGER
INITIAL

CITY OF MORENO VALLEY

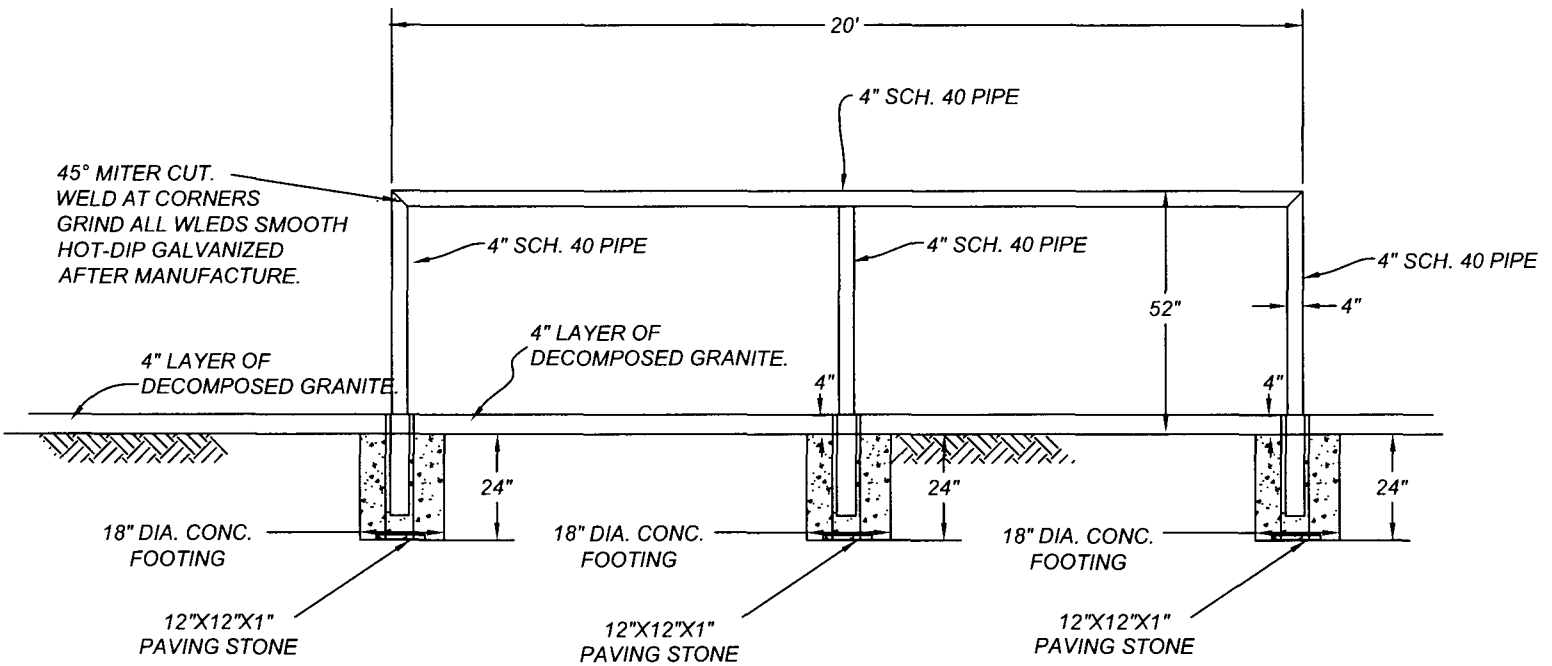
PREPARED BY CAPITAL PROJECTS

2 of 6

APPROVED BY

PUBLIC WORKS DIRECTOR/
CITY ENGINEER

NO.
633



HITCHING RAIL DETAIL