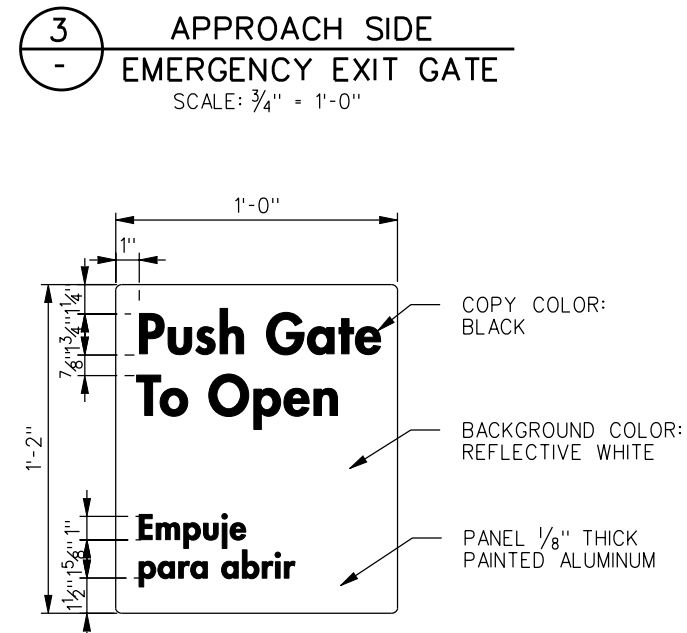
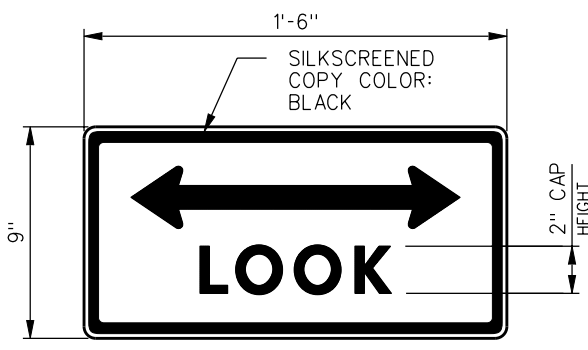
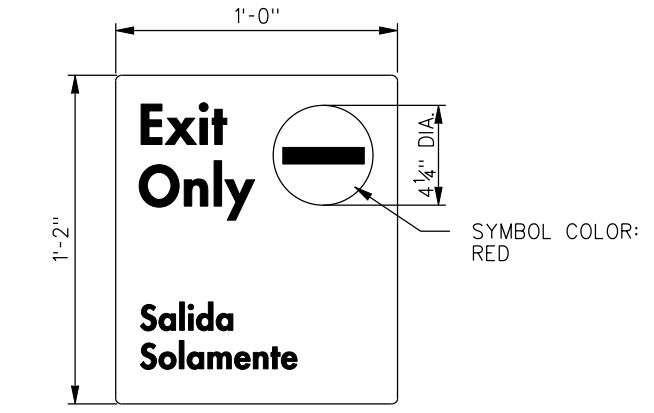
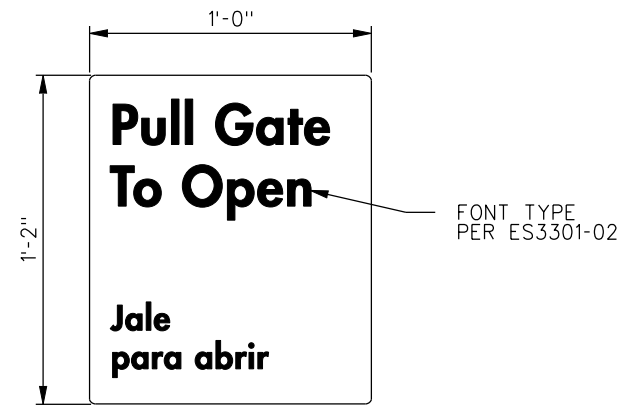
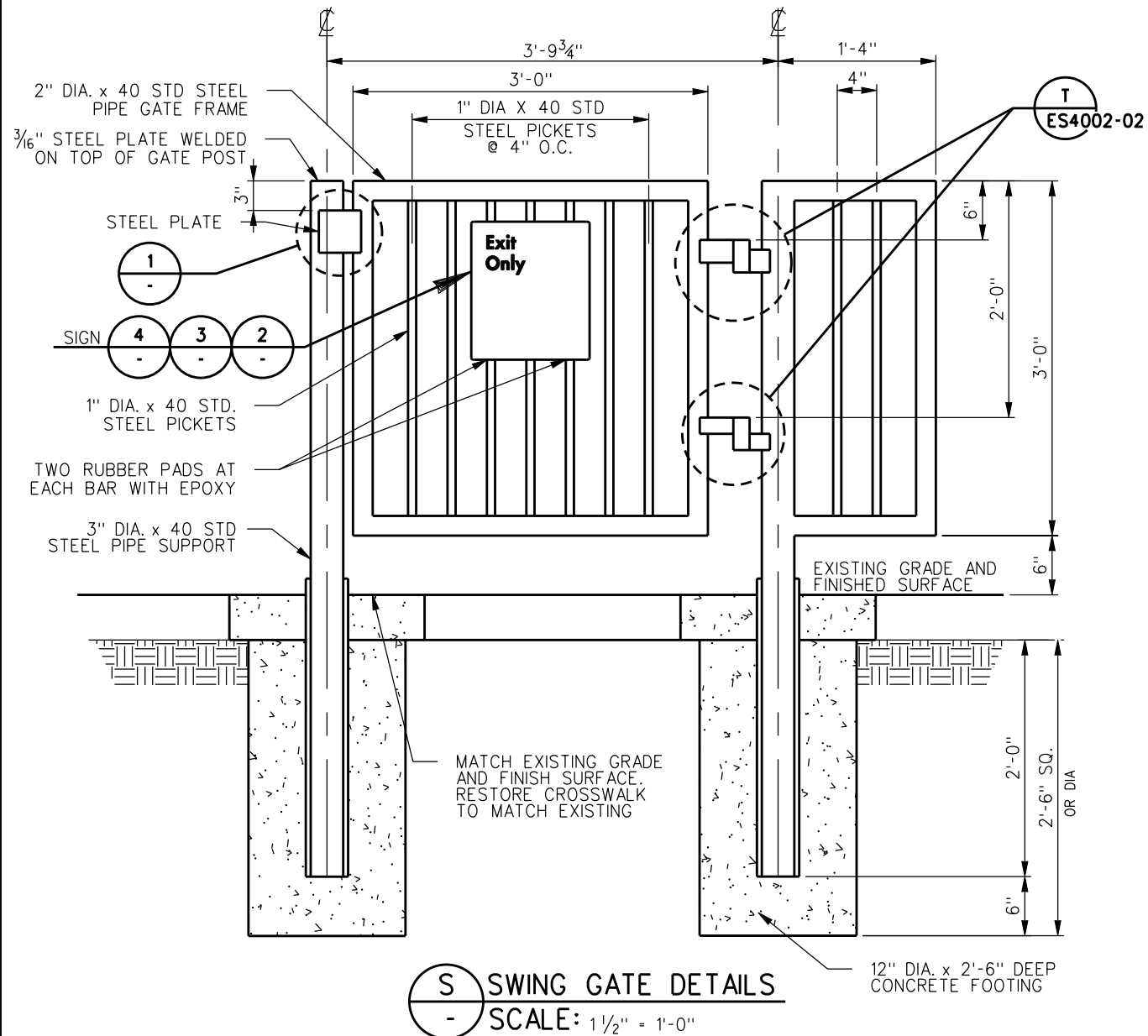
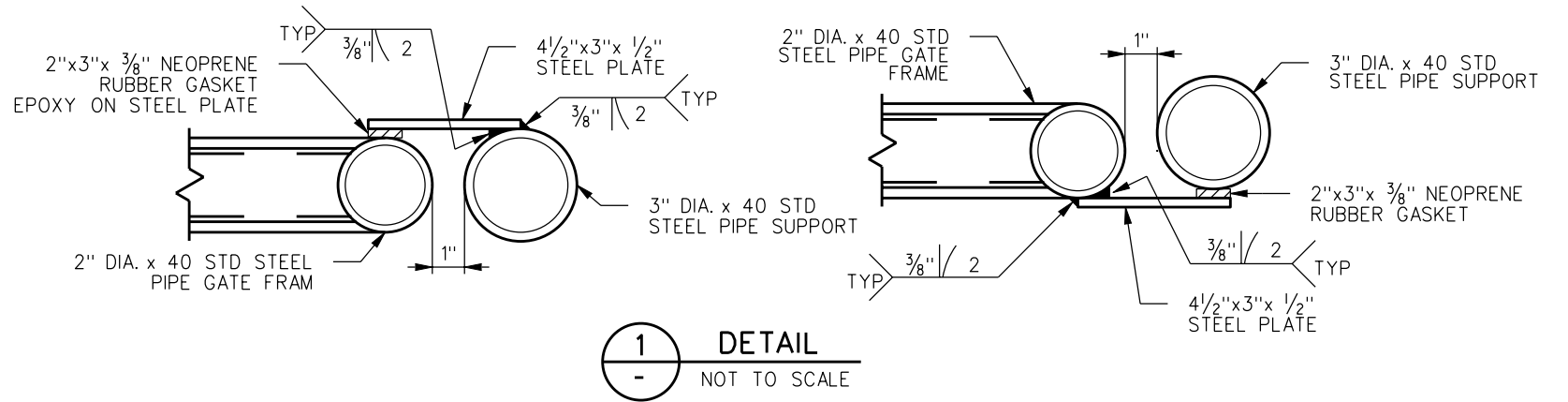


NOTES:

1. A DUPLEX SYSTEM (PAINT OR POWDER COAT OVER GALVANIZING) SHALL BE USED FOR THE SWING GATE ASSEMBLY AND HAND RAILING. AFTER FABRICATION AND SURFACE PREPARATION, THE SWING GATE ASSEMBLY AND HANDRAILING SHALL BE HOT-DIP GALVANIZED IN ACCORDANCE WITH ASTM A123 (PRODUCTS) AND A153 (HARDWARE). COATING WHICH HAS BEEN SHOP OR FIELD CUT, BURNED BY WELDING OR DAMAGED SHALL BE REPAIRED OR RE-COATED IN ACCORDANCE WITH ASTM A780.
2. AFTER CLEANING AND PROFILING GALVANIZED SURFACE IN ACCORDANCE WITH ASTM D6386, THE SWING GATE ASSEMBLY AND HANDRAILING SHALL BE PAINTED OR POWDERCOATED WITH A ZINC-RICH PRIME COAT, HIGH PERFORMANCE FIRST COAT AND ACRYLIC TOP COAT. THE PAINT COLOR SHALL BE FEDERAL COLOR NO. FS34092 UNLESS NOTED OTHERWISE.



- NOTES:**
- * MAY BE MOUNTED ON SEPARATE POST
 - 1. 3M EXTERIOR GRADE VINYL DIE CUT SHEETING, COLOR: WHITE
 - 2. SEAL SIGN WITH TRANSPARENT ANTI-GRAFFITTI FILM.
 - 3. FOR ADDITIONAL SIGN DETAILS SEE ES3318 AND ES3319.

REV.	DATE	DESCRIPTION	DES.	ENG.
1	9-21-10	REVISED NOTES DETAIL 1 AND DETAIL S	AC	NDP

DRAWN BY: A. CARLOS DATE: 12/12/09

MANAGER: CIVIL ENGINEERING

DIRECTOR OF ENGINEERING AND CONSTRUCTION

METROLINK

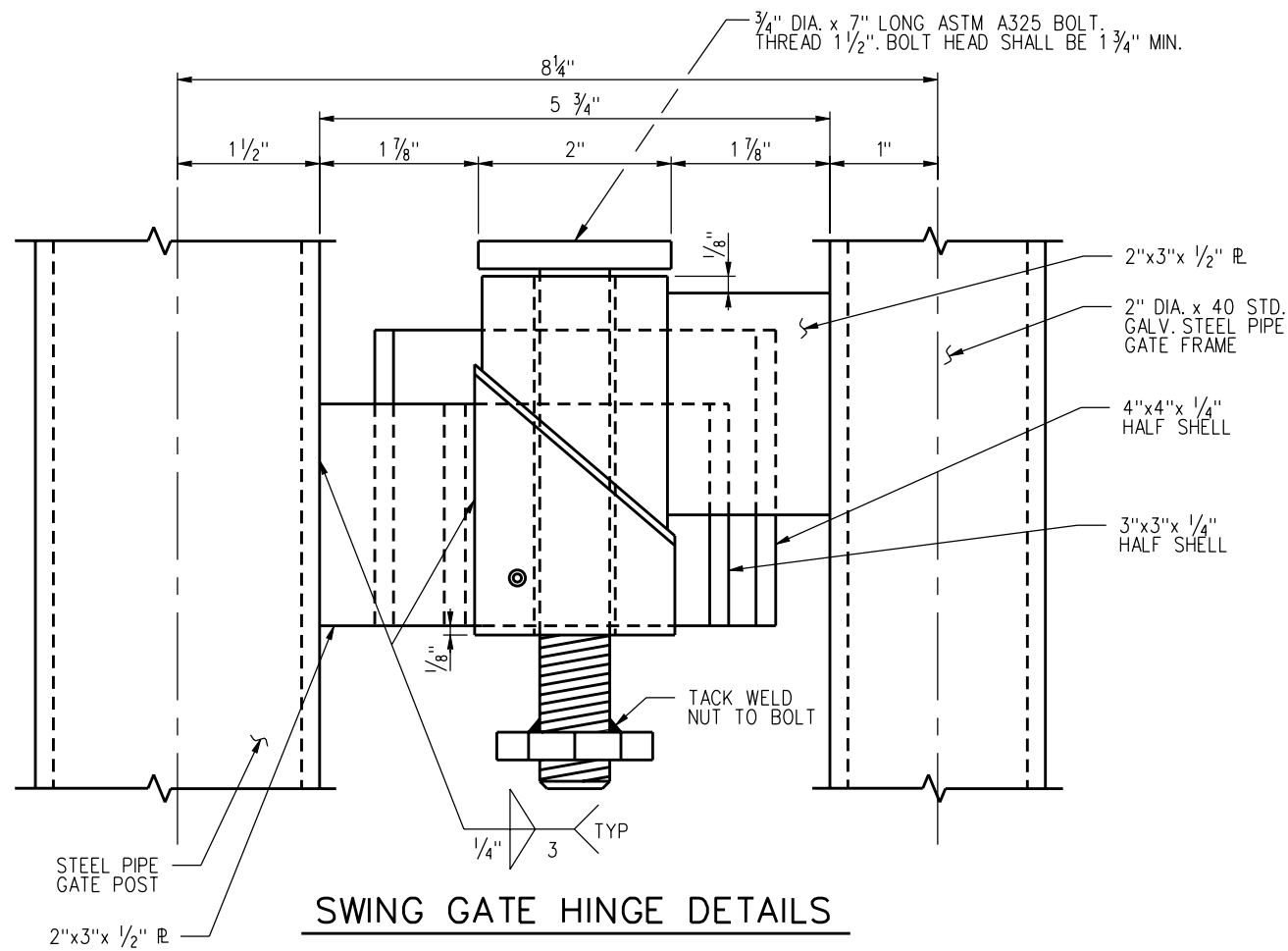
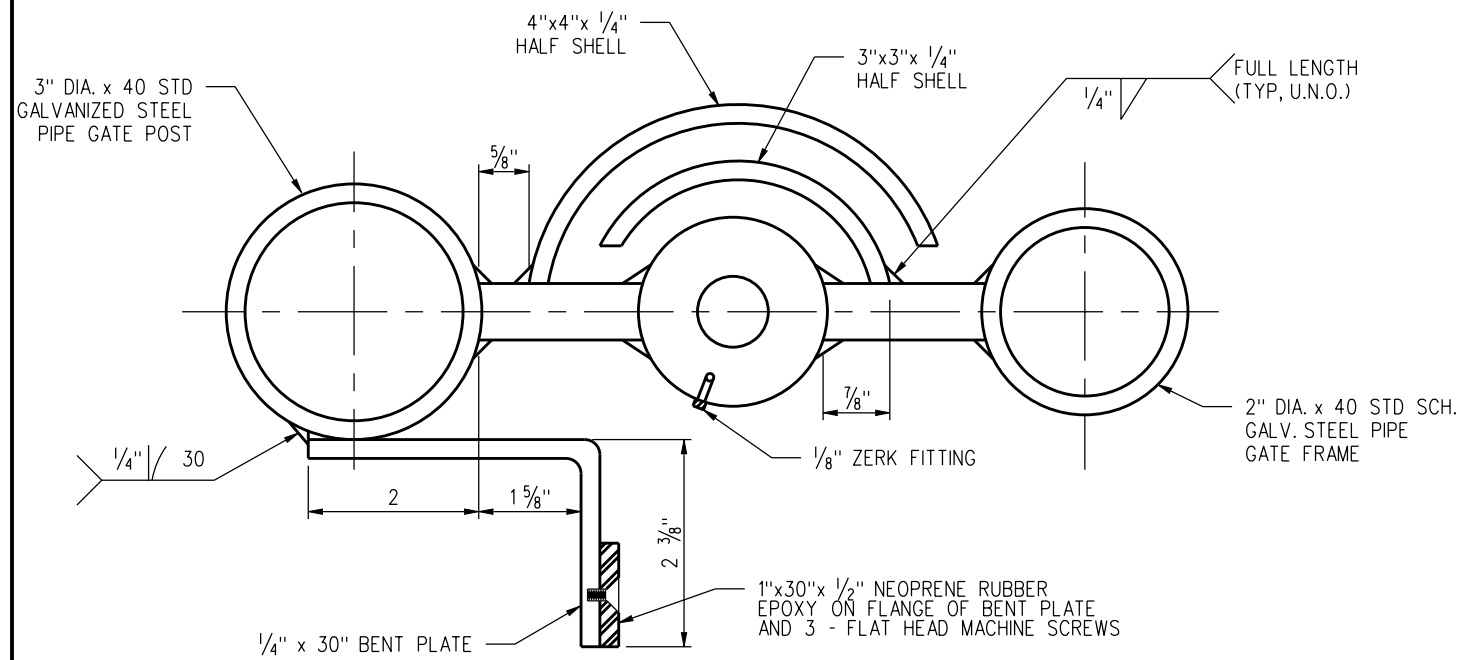
SOUTHERN CALIFORNIA REGIONAL RAIL AUTHORITY
700 S. FLOWER ST. SUITE 2600, L. A., CA. 90017

ENGINEERING STANDARDS

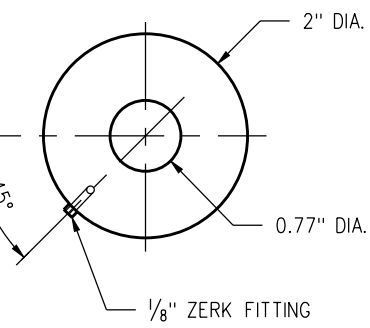
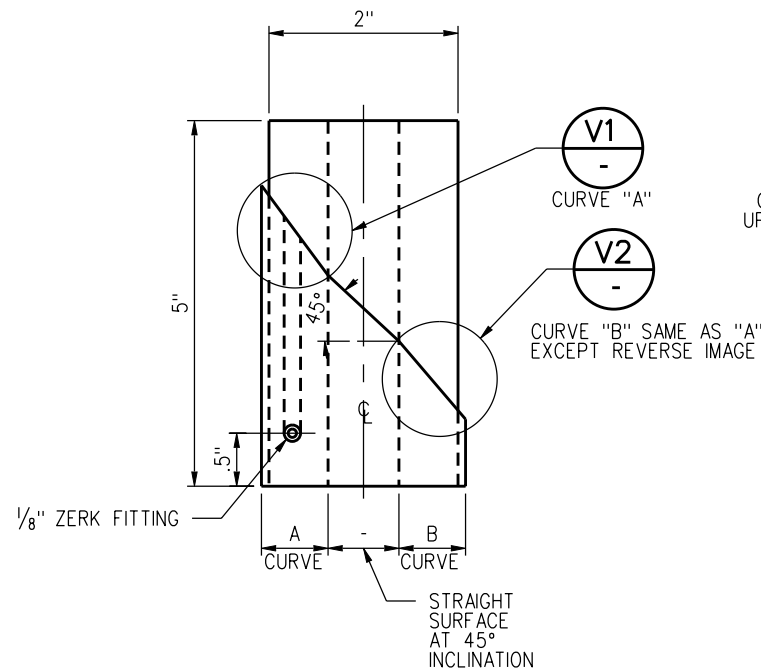
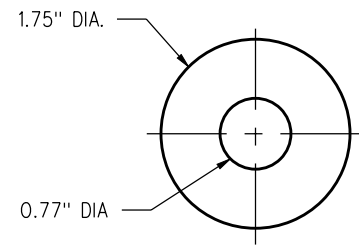
PEDESTRIAN SWING GATE DETAILS

STANDARD	4002
SCALE:	AS NOTED
REVISION SHEET	1 OF 2
CADD FILE:	ES4002-01

PRE-FINAL SUBMITTAL



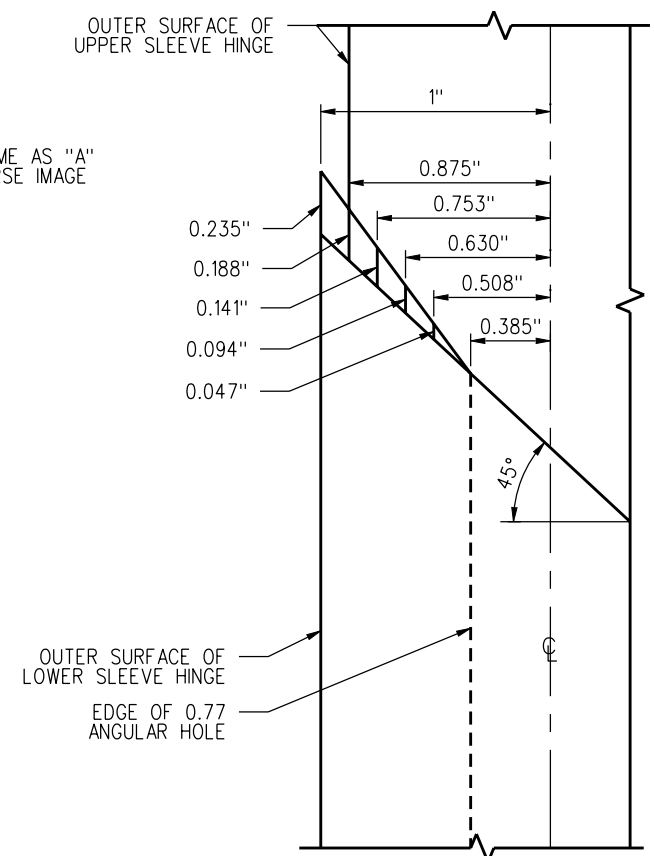
T DETAIL T



U DETAIL U

NOTES:

- HINGE SLEEVE GRADE OF STEEL TO BE ASTM A441 HARDENED STEEL.
- ALL HINGE SLEEVE DIMENSIONS ARE IN INCHES UNLESS OTHERWISE NOTED.
- HINGE SLEEVE MACHINING SHALL BE PRECISION TO THE NEAREST THOUSANDTH OF AN INCH (0.001).
- ROTATING CURVED CONTACT SURFACES OF HINGE SLEEVE, (CURVE SURFACES 'B' AND 'A') TO BE POLISHED.
- CONSTRUCT AND ASSEMBLE ONE GATE FOR TESTING, SCRRRA TO WITNESS GATE TESTING AND APPROVE GATE OPENING AND CLOSING OPERATION BEFORE ANY WORK DONE AT ANY STATION PEDESTRIAN CROSSING. IF GATE OPERATION IS NOT APPROVED BY SCRRRA, MODIFY GATE AND GATE HINGE AS NECESSARY AND REPEAT TESTING UNTIL GATE OPERATION IS APPROVED BY SCRRRA.
- FORCE REQUIRED TO OPERATE SHALL BE 22N (5 LBS) MAX.



V DETAIL V1 & V2

REV.	DATE	DESCRIPTION	DES.	ENG.
1	9-21-10	REVISED DETAIL "T" AND NOTE	AC	NDP

DRAWN BY: A. CARLOS DATE: 12/12/09
 MANAGER: CIVIL ENGINEERING
 Darrell V. Maxey
 DIRECTOR OF ENGINEERING AND CONSTRUCTION

SCRRRA ENGINEERING STANDARDS ARE INTENDED FOR SCRRRA APPROVED USES ONLY. FOR NON-SCRRRA APPROVED USES: SCRRRA SHALL NOT BE RESPONSIBLE FOR THE ACCURACY OR COMPLETENESS OF THE DATA OR INFORMATION CONTAINED HEREIN. THE SELECTION AND USE OF THESE STANDARDS IS THE SOLE RESPONSIBILITY OF THE USER AND SHOULD NOT BE USED WITHOUT CONSULTING A REGISTERED PROFESSIONAL ENGINEER. ALL WARRANTIES AND REPRESENTATIONS OF ANY KIND ARE DISCLAIMED. ANYONE MAKING USE OF THIS INFORMATION AGREES THAT IT ASSUMES ALL LIABILITY ARISING FROM SUCH USE. NO PART OF THESE STANDARDS SHOULD BE REPRODUCED OR DISTRIBUTED IN ANY FORM OR BY ANY MEANS WITHOUT THE PRIOR WRITTEN PERMISSION OF SCRRRA. ALL RIGHTS RESERVED.

METROLINK
 SOUTHERN CALIFORNIA REGIONAL RAIL AUTHORITY
 700 S. FLOWER ST. SUITE 2600, L. A., CA. 90017

ENGINEERING STANDARDS
 PEDESTRIAN SWING GATE DETAILS

STANDARD	4002
SCALE	NONE
REVISION	SHEET
1	2 OF 2
CADD FILE:	ES4002-02

PRE-FINAL SUBMITTAL