

WELD HINGE TO
POST & FRAME



HINGE DETAIL

N.T.S.

APPLICATION FOR KNOX
PADLOCK #3753 2 EACH

S.S. HINGE 4"x4"x3/8"
NRP (3 PER GATE)

S.S. FRAME
2"x2"x0.188" SQ.
MITER & WELD
CORNERS

6' OPENING

GATE STOP

CAP (S.S.) SQ.

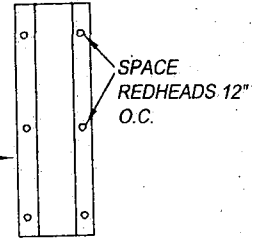
3"x3"x1/4" SQ S.S. POST

16"x16" GROUTED
COLUMN W/ CAP

PICKETS 1"x1"x0.083" SQ
SS EQUAL SPACE N.T.E.
4" BETWEEN PICKETS.
CENTER & WELD TO
INTERIOR OF GATE
FRAME

GATE POST WILL FASTEN TO BLOCK
COLUMN VIA THIS DETAIL

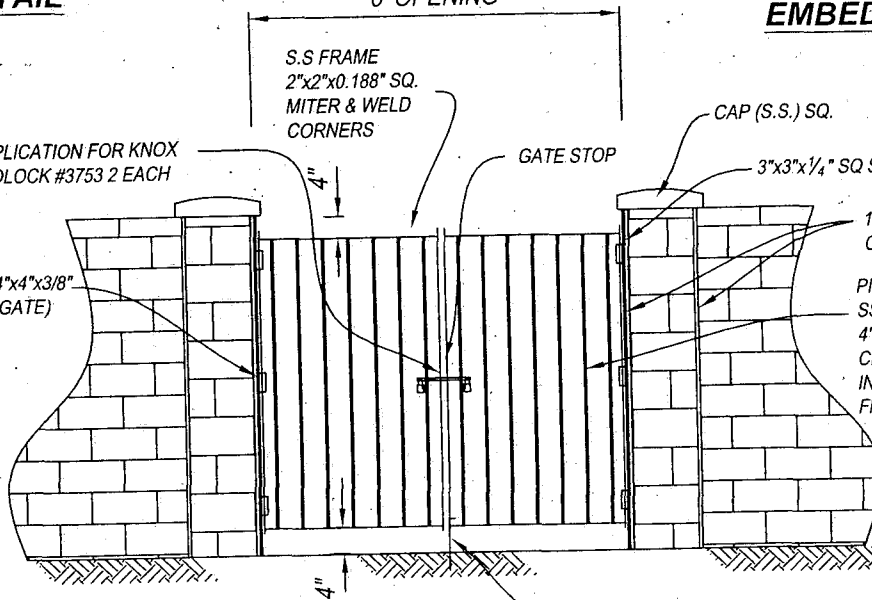
3/8"x6" S.S. FLAT BAR
FASTENED BY 3/8" S.S.
REDHEADS.
TACK WELD S.S. NUT
CONTINUOUS WELD
POST TO BAR



**GATE POST
EMBED DETAIL**

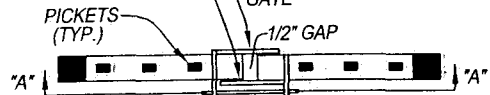
N.T.S.

SPACE
REDHEADS 12"
O.C.



CAN & BOLT
SET IN CONC.

1/4" x 4" WIDE
STAINLESS STEEL
PLATE GATE STOP,
ENTIRE LENGTH OF
GATE

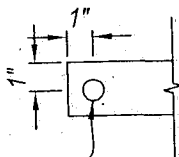


1/4" x 4" x 6" SS
TAB, SLOTTED
3/4" x 2-1/2"

TOP VIEW OF GATE

N.T.S.

SEE LOCK
BAR DETAIL



5/8" DIA.
FOR FIRE
PAD LOCK

LOCK BAR
N.T.S.

**SECTION "A-A"
LOCKING MECHANISM**

N.T.S.

FIRE ACCESS GATE

N.T.S.

3/8"x2"x12" S.S. BAR
W/ 2EA 5/8" DIA.
HOLES

NOTES:

- 1.) ALL METAL IS TO BE STAINLESS STEEL NO. 304, SAND BLAST FINISH, NATURAL COLOR.
- 2.) COLUMN PER FENCE/WALL PLAN.

CAPITAL PROJECTS		DATE	1/05	CITY OF MORENO VALLEY PREPARED BY CAPITAL PROJECTS
APPROVED BY		DIVISION MANAGER INITIAL		
PUBLIC WORKS DIRECTOR/ CITY ENGINEER		FIRE ACCESS GATE		
				1 of 1 NO. 605