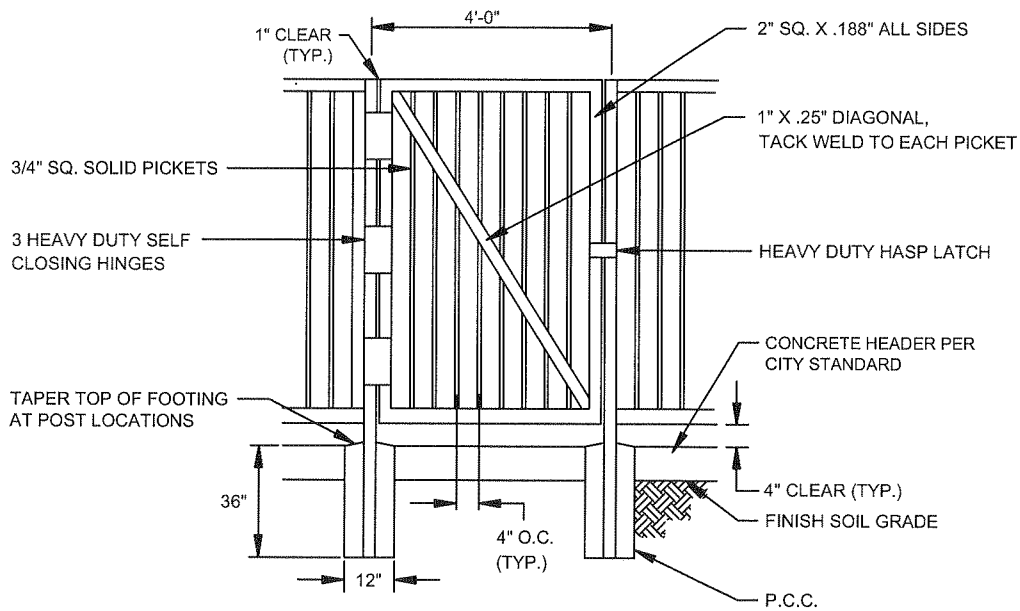


TYPICAL FENCE ELEVATION



TYPICAL WALK GATE

NOTES:

1. ALL FENCE MEMBERS SHALL BE TUBULAR OR SOLID STEEL STOCK OR AS NOTED ABOVE.
2. FABRICATE PANELS AS A UNIT, WELD AND GRIND SMOOTH ALL JOINTS.
3. APPLY ZINC-RICH PRIME COAT AFTER WELDING PANELS TO POSTS. CLEAN AND GRIND SMOOTH, TOUCH UP PRIME COAT.
4. APPLY 2 COATS SEMI-GLOSS RUST RESISTANT ENAMEL AFTER FENCE OR GATE ERECTION. COLOR PER PROJECT PLANS.

2-10-06

7-24-95

CITY OF RANCHO CUCAMONGA, CALIFORNIA

APPROVED BY:

M. Garcia 2/22/06
 CITY ENGINEER DATE
 R.C.E. 24953

TUBULAR STEEL FENCE

USE WITH STANDARD SPECIFICATIONS FOR PUBLIC WORKS CONSTRUCTION

STANDARD PLAN

608

SHEET 1 OF 1