

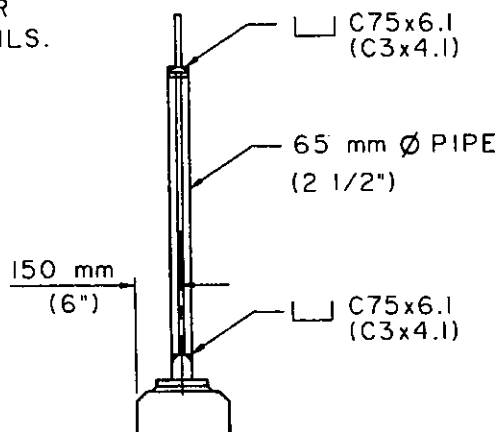
4'-0" HGT
6'-0" WGT

SEE SHEET 4 FOR POST BASE AND ANCHORAGE DETAIL

ELEVATION

NOTE:

1. SEE SHEETS 2, 3 & 4 FOR SECTION VIEWS AND DETAILS.
2. SEE SHEET 2 FOR NOTES.



SECTION B-B

LOS ANGELES COUNTY DEPARTMENT OF PUBLIC WORKS

PICKET RAILING

STANDARD PLAN
METRIC

6102-1

APPROVED

Thomas A. Robinson
DIRECTOR OF PUBLIC WORKS

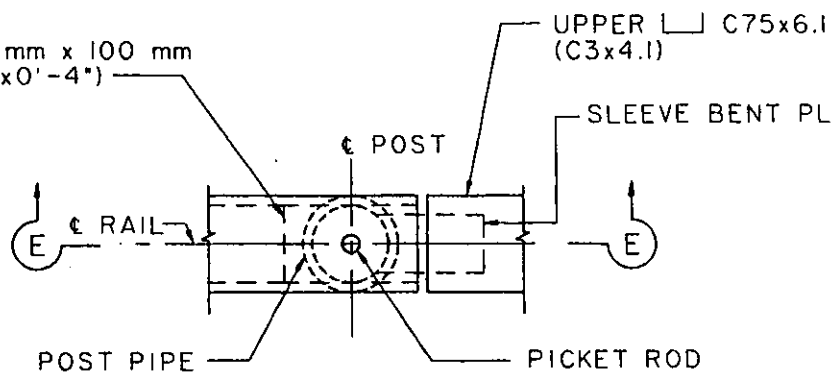
5/31/1992
DATE

1999

REVISIONS

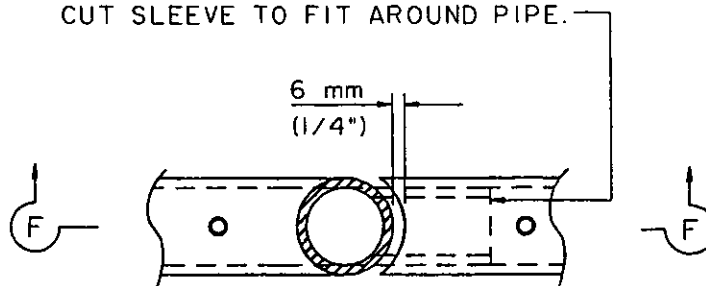
SHEET 1 OF 4

PL 65 mm x 6 mm x 100 mm
(PL 2 1/2"x1/4"x0'-4")



VIEW C-C

SLEEVE FORMED FROM 3.42 mm
(10 GA.) BENT PL-SLIDING FIT.
WELDED AND GROUND SMOOTH.
CUT SLEEVE TO FIT AROUND PIPE.



SECTION D-D

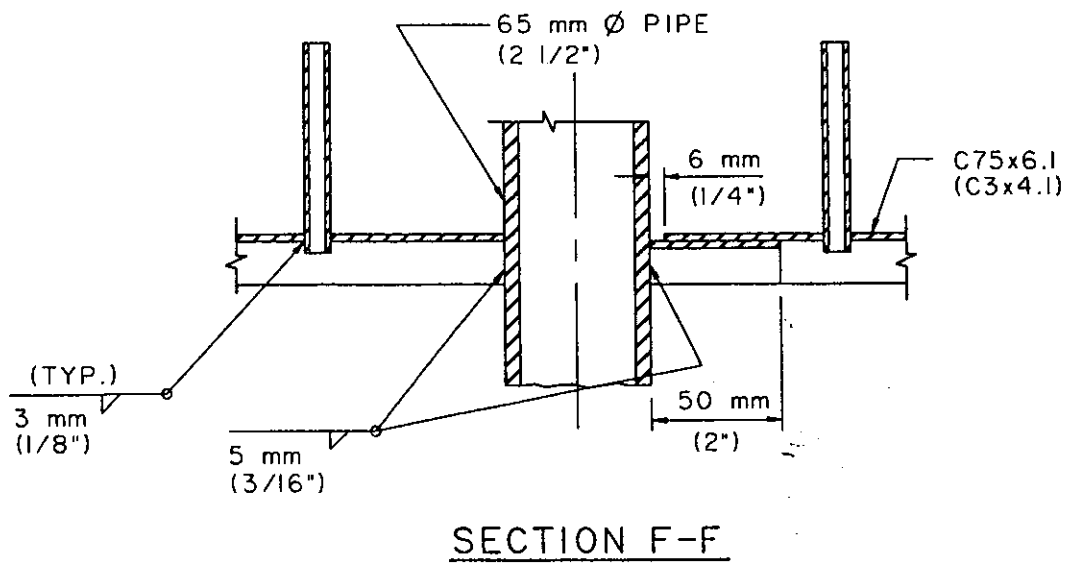
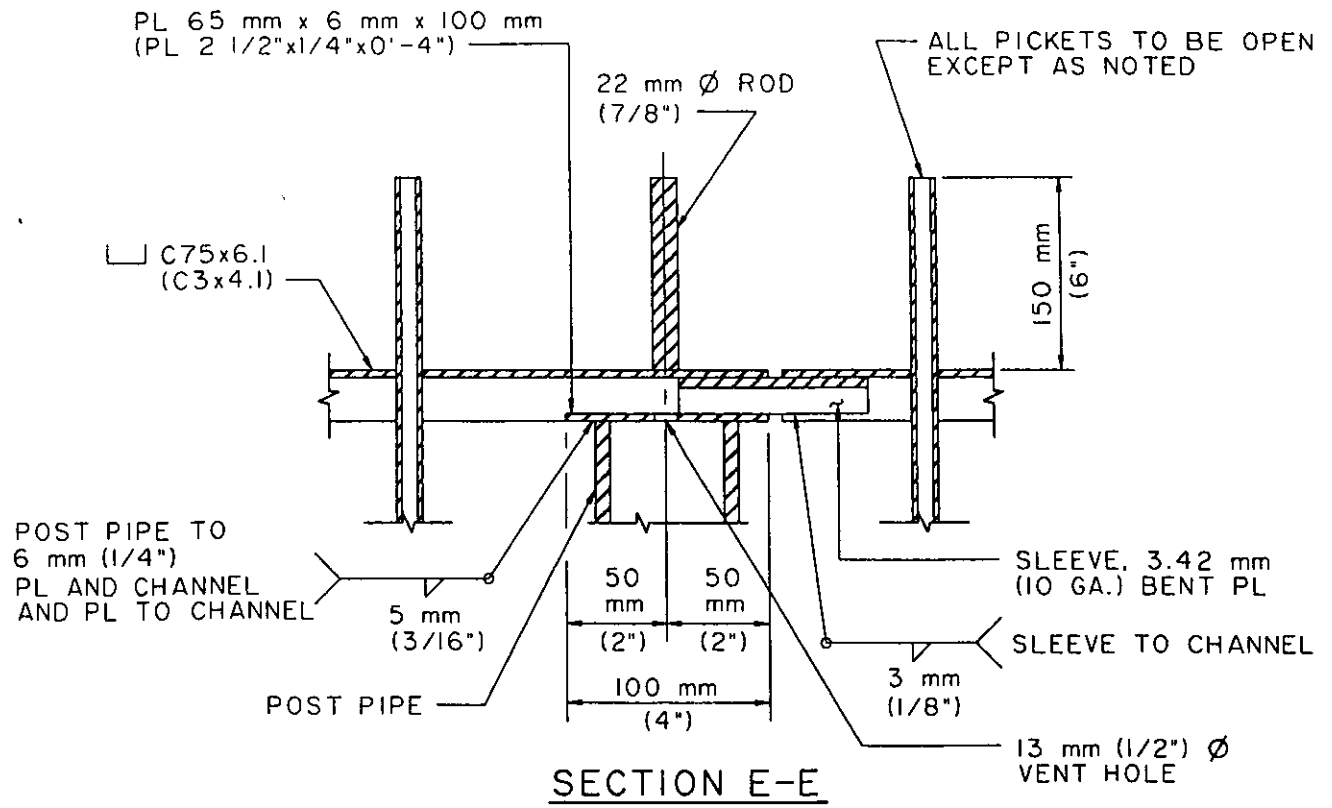
NOTE - UNLESS OTHERWISE INDICATED:

1. SPACE POSTS TO CLEAR EXPANSION JTS. BY 230 mm (9") MIN. TO ϵ OF POST. AT EXPANSION JTS. IN DECK, RAIL JTS. SHALL PROVIDE SAME ALLOWANCE FOR MOVEMENT WITH CORRESPONDING INCREASE IN LENGTH OF SLEEVE.
2. RAILING SHALL CONFORM TO HORIZONTAL AND VERTICAL ALIGNMENT. POSTS AND BALUSTERS SHALL BE VERTICAL WITH A MAXIMUM DEVIATION NOT TO EXCEED 6 mm (1/4") IN 3 m (10').
3. RAILING AND ALL PARTS AND FITTINGS SHALL BE GALVANIZED AFTER FABRICATION.
4. DIMENSIONS SHOWN ON THE PLAN FOR METRIC AND ENGLISH UNITS ARE NOT EXACTLY EQUAL VALUES. IF METRIC UNITS ARE USED, ALL VALUES USED FOR CONSTRUCTION SHALL BE METRIC VALUES. IF ENGLISH UNITS ARE USED, ALL VALUES USED FOR CONSTRUCTION SHALL BE ENGLISH VALUES.

LOS ANGELES COUNTY DEPARTMENT OF PUBLIC WORKS

PICKET RAILING

STANDARD PLAN
METRIC
6102-1
SHEET 2 OF 4



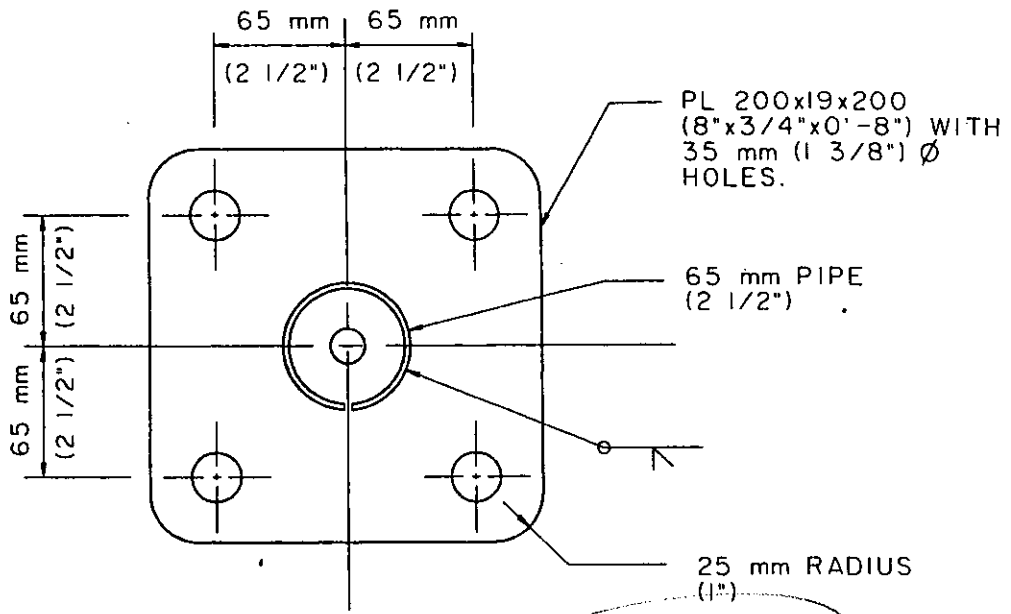
LOS ANGELES COUNTY DEPARTMENT OF PUBLIC WORKS

PICKET RAILING

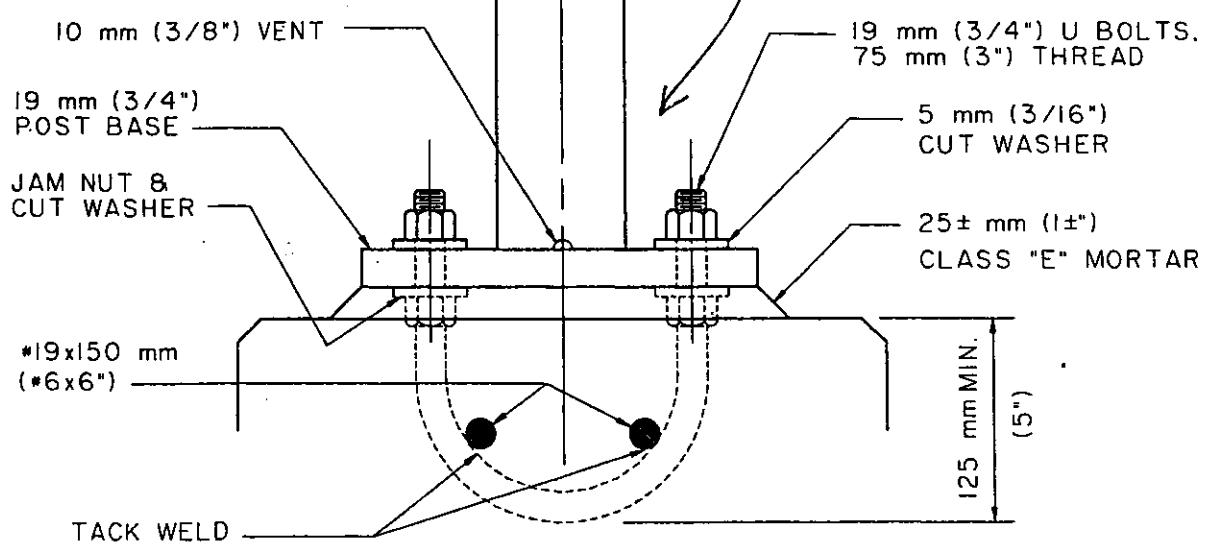
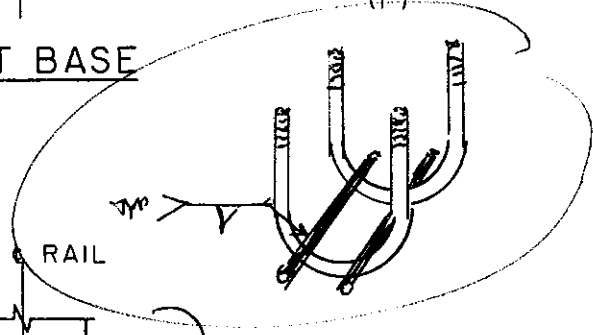
STANDARD PLAN
METRIC

6102-1

SHEET 3 OF 4



POST BASE



ANCHORAGE DETAIL

LOS ANGELES COUNTY DEPARTMENT OF PUBLIC WORKS

PICKET RAILING

STANDARD PLAN
METRIC
6102-1
SHEET 4 OF 4